



Henry  
the  
Guard

# Henry the Guard Pattern



With Love, Tonia

## Abbreviations

<b>MR</b>	magic ring
<b>sc</b>	single crochet
<b>inc</b>	increase; crochet 2 sc in the same stitch
<b>dec</b>	decrease; crochet 2 sc together
<b>rnd</b>	round(s)
<b>sl st</b>	Slip stitch
<b>fl</b>	Front Loops Only
<b>bl</b>	Back Loops Only
<b>hdc</b>	Half Double Crochet
<b>dc</b>	Double Crochet
<b>[...]</b>	repeat instructions in brackets X times
<b>(..)</b>	total number of stitches in the round or row (chains not counted)
	<b>*Close Up</b> means pull the yarn through the front loops and pull tight

## Materials required

- Yarn I used: Royal in White, Red, Black, Mustard and Orange.
- Black and White thread
- 9 mm eyes
- Crochet hook 3.0 mm
- Fiberfill/Toy stuffing
- Stitch markers, scissors and embroidery needle

# Head

Yarn used: White

- Rnd 1: MR 6 (6)
  - Rnd 2: [inc] x 6 (12)
  - Rnd 3: [1 sc, inc] x 6 (18)
  - Rnd 4: [2 sc, inc] x 6 (24)
  - Rnd 5: [3 sc, inc] x 6 (30)
  - Rnd 6: [4 sc, inc] x 6 (36)
  - Rnd 7: [5 sc, inc] x 6 (42)
  - Rnd 8: [6 sc, inc] x 6 (48)
  - Rnd 9: [7 sc, inc] x 6 (54)
  - Rnd 10 - 20: 54 sc (54)
  - Rnd 21: [7 sc, dec] x 6 (48)
  - Rnd 22: [6 sc, dec] x 6 (42)
  - Rnd 23: [5 sc, dec] x 6 (36)
  - Rnd 24: [4 sc, dec] x 6 (30)
  - Rnd 25: [3 sc, dec] x 6 (24)
- Eye placement moment  
Going for embroidered eyes?  
Finish the head and continue  
on the next pages.
- Rnd 26: [2 sc, dec] x 6 (18)
  - Rnd 27: [1 sc, dec] x 6 (12)
  - Rnd 28: [dec] x 6 (6)
- Close up and weave  
in the end.



## Lazy eyes

Use white thread underneath the eyes. To make the lazy eyes, use white yarn and ch 3 cut off the yarn and place it over the eye and use the ends to sew it to the head. Place eyebrows with black thread.

## Placing the safety eyes

Fill up with fiberfill and place the eyes between rounds 15-16 with 8 stitches in between. You can choose to indent the eyes a bit. Take a piece of yarn in the same color as you're working with. Insert the needle in the same stitch where the eye is placed and pull it through the head to the other eye. Stick the needle back in a stitch to the side and pull through to the other side. Do this again so you will have a piece of yarn on both sides of the head and pull as tightly as you seem fit. Then pull both ends through the stitch and knot them together. Keep filling up the head as you go.



## Nose

Yarn used: Orange

**Rnd 1:** MR 3 (3)

**Rnd 2:** [inc] x 3 (6)

**Rnd 3:** [1 sc, inc] x 3 (9)

**Rnd 4 - 8:** 9 sc (9)

Fasten off and leave a long tail to sew to the head.

Stuff before sewing



## Placement of the nose

With safety eyes, between rounds 14 - 18

With embroidery eyes between round 15-19



## Mouth

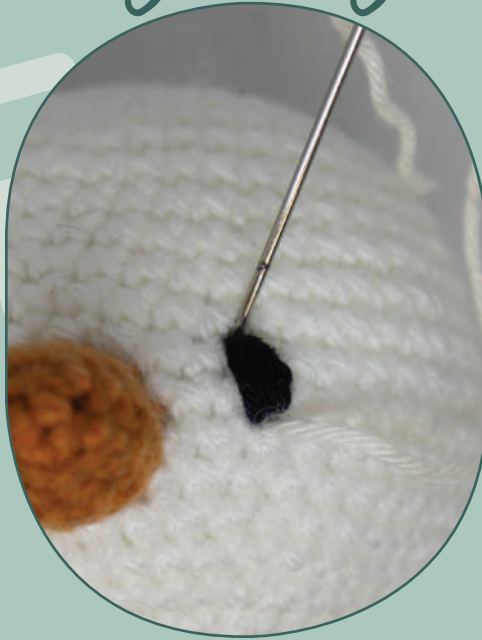
For the mouth you can use pins to see where you want to place it. Once you are satisfied, use a black thread and sew it alongside the pins.



# Embroidery Eyes



Make a long black stripe with black embroidery yarn, between rounds, 2 stitches long. Repeat 4-5 times.



With a strand of white, make a long stitch next to the black.



Insert your needle at the top of the eye and bring it out in the middle of the black.



Reinsert your needle at the top of the eye and pull through. Secure the ends and hide them inside the head.



Using a strand of black cotton, start the eyelashes with one angled stitch.



and one straight stitch above the eye. Make eyebrows with black thread above the eye.





## Puffs (make two)

Yarn used: Red

**Rnd 1:** MR 6 (6)

**Rnd 2:** [inc] x 6 (12)

**Rnd 3:** [1 sc, inc] x 6 (18)

**Rnd 4:** [5 sc, inc] x 3 (21)

**Rnd 5:** 21sc (21)

Flatten the puff and sc through both sides. Leave a long tail to sew to the body.





**Rounds in White:**

13,14,15,19,20,21,25,26,27

**Rounds in Black:**

16,17,18,22,23,24,28,29,30



# Legs

(make two)

**Yarn used:** Black & White

**Start with Black**

**Chain 6 and start in the 2nd from the hook.**

**Rnd 1:** 4 sc, 3 sc in the last stitch.

Continue on the other side 3 sc, inc (12)

**Rnd 2:** Inc, 3 sc, [inc x 3], 3 sc, [inc x 2] (18)

**Rnd 3:** 1 sc, inc, 3 sc, [1 sc, inc] x 3, 3 sc, [1 sc, inc] x 2 (24)

**Rnd 4:** 2 sc, inc, 3 sc, [2 sc, inc] x 3, 3 sc, [2 sc, inc] x 2 (30)

**Rnd 5:** BLO 30 sc (30)

**Rnd 6 - 7:** 30 sc (30)

**Rnd 8:** 7 sc [dec x 6] 11 sc (24)

**Rnd 9:** 4 sc [dec x 6] 8 sc (18)

**Rnd 10:** 4 sc [dec x 3] 8sc (15)

Do not cut the Black yarn. Make sure you keep it on outside of the shoe (see the pictures).

**Change to White**

**Rnd 11:** BLO (15)

Stuff the foot firmly

**Rnd 12:** [3 sc, dec] x 3 (12)

**Rnd 13 - 15:** 12 sc (12)

If you have not cut of the Black yarn we will start with the trim of the boot now.

If you have cut of the yarn you can continue with the leg first and then go back for the boot. **Continue with the leg, change to Black and keep switching with White after three rounds.**

**Rnd 16 - 30:** 12 sc (12)

Stuff the leg lightly. You might want to add a sc to make sure the feet point forward. Flatten the leg and sc through the 6 stitches. Leave a long tail to sew to the body.



# Boots

**Yarn used:** Black

Use the Black yarn attached at round 11.

**Rnd 1:** 15 sc (15)

**Rnd 2:** [4 sc, inc] x 3 (18)

**Rnd 3:** 18 sc (18)

Fasten off and weave in the end.

# Arms

(make two)

**Yarn used:** Red, Black & White

## Start with White

**Rnd 1:** MR 6 (6)

**Rnd 2:** [1 sc, inc] x 3 (9)

**Rnd 3:** [2 sc, inc] x 3 (12)

**Rnd 4:** [3 sc, inc] x 3 (15)

**Rnd 5:** 15 sc (15)

**Rnd 6:** [4 sc, inc] x 3 (18)

**Rnd 7 - 9:** 18 sc (18)

## Change to Black

**Rnd 10:** [1 sc, dec] x 6 (12)

Stuff the hand firmly.

**Rnd 11:** BLO, 12 sc (12)

**Change to Red and keep switching with white after three rounds.**

**Rnd 12 - 29:** 12sc (12)

Stuff the rest of the arm slightly until round 23. Fold the arm and crochet with red through both sides (6)

Fasten off and cut the yarn, leave a tail to sew to the body.

## Rounds in White:

15,16,17,21,22,23,27,28,29

## Rounds in Red:

12,13,14,18,19,20,24,25,26

# Cuffs

**Yarn used:** Black

Insert the hook like the image.

**Rnd 1:** sc 12 stitches in the FL you created in round 11 of the arm, add one more stitch to close the round.

Ch1 and turn.

**Row 2:** 12sc, ch1 and turn.

**Row 3:** 12 sc, ch1, fasten off and weave in the ends.



# Body

Yarn used: Black & Red

Start with Black

- Rnd 1: MR 6 (6)
- Rnd 2: [inc] x 6 (12)
- Rnd 3: [1 sc, inc] x 6 (18)
- Rnd 4: [2 sc, inc] x 6 (24)
- Rnd 5: [3 sc, inc] x 6 (30)
- Rnd 6: [4 sc, inc] x 6 (36)
- Rnd 7: [5 sc, inc] x 6 (42)
- Rnd 8: [6 sc, inc] x 6 (48)
- Rnd 9: [7 sc, inc] x 6 (54)
- Rnd 10: [8 sc, inc] x 6 (60)
- Rnd 11 - 15: 60sc (60)

Change to Red

- Rnd 16: 60sc (60)
- Rnd 17: BLO 60sc (60)
- Rnd 18: [8 sc, dec] x 6 (54)
- Rnd 19 - 21: 54 sc (54)
- Rnd 22: [7 sc, dec] x 6 (48)
- Rnd 23 - 25: 48 sc (48)
- Rnd 26: [6 sc, dec] x 6 (42)
- Rnd 27 - 28: 42 sc (42)
- Rnd 29: [5 sc, dec] x 6 (36)
- Rnd 30 - 31: 36 sc (36)
- Rnd 32: [4 sc, dec] x 6 (30)
- Rnd 33 - 34: 30 sc (30)
- Rnd 35: [3 sc, dec] x 6 (24)

Change to Black

- Rnd 36: 24 sc (24)
  - Rnd 37: BLO 24 sc (24)
- Fasten off and leave a long tail to sew to the head.



Start in the front loops you created in round 17 of the body. Place the hook as shown in the pictures.

Start in the front of the body in the middle

**Row 1:** 60sc Do not close the round, ch1 and turn

**Row 2:** 60sc, ch1 and turn

**Row 3:** 6sc, inc, 22sc, inc, 23sc, inc, 6sc (63)

**Row 4 - 8:** 63sc, ch1 and turn

**Row 9:** 62sc, inc, continue along side the border and inc in the other corner, fasten off and weave in the end.



# Collar

Yarn used: Black

In the front loops you created in round 37 of the body. Insert the hook like the image.

**Rnd 1:** 24sc, close with a slip stitch, fasten off and weave in the end.



# Belt

Yarn used: White

Start with a long tail for sewing.

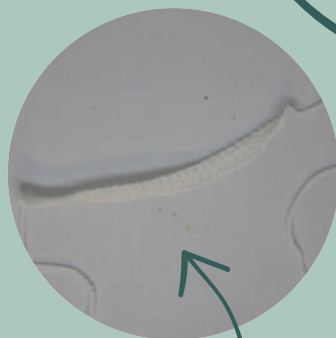
**Chain 36 and start in the 2nd from the hook**

**Row 1:** 35 sc, chain 1 and turn (35)

**Row 2:** 35 sc (35)

Fasten off and leave a long tail for sewing.

The belt will not be completely around the body.



**Coat Line, in white**  
Start at the bottom of the coat and sc along the coat flap until you reach the body. When you have reached the body you will sc in a straight line until the last round of the body. You can also sew the line if that has your preference.



# Buckle

Yarn used: Mustard

**Chain 12 and close the round with a slipstitch.**

**Rnd 1:** 3 sc in every 3th stitch, 1 sc in the other stitches (20)

Fasten off and use a needle to go through the middle loop like the picture (go through the back) and go back and forth until you have three strings. Fasten off and weave in the end. Now you have a moveable belt buckle. Make sure you have attached the buckle before sewing on.



Sew the belt ends to the body just above the jacket. Sew the belt ends to the body just above where the coat flaps start. Make sure you have attached the buckle before sewing on.

# Hat

Yarn used: Black

**Start with Black**

**Rnd 1:** MR 6 (6)

**Rnd 2:** Inc x 6 (12)

**Rnd 3:** [1 sc, inc] x 6 (18)

**Rnd 4:** [2 sc, inc] x 6 (24)

**Rnd 5:** [3 sc, inc] x 6 (30)

**Rnd 6:** [4 sc, inc] x 6 (36)

**Rnd 7:** [5 sc, inc] x 6 (42)

**Rnd 8:** [6 sc, inc] x 6 (48)

**Rnd 9:** [7 sc, inc] x 6 (54)

**Rnd 10:** [8 sc, inc] x 6 (60)

**Rnd 11 - 17:** 60sc (60)

**Rnd 18:** [18sc, dec] x3 (57)

**Rnd 19 - 24:** 57sc (57)

**Rnd 25:** [17sc, dec] x3 (54)

Try the hat on the head to make sure it fits on the head, if its too tight change round 25 to 57sc instead of decreases.

Fasten off and weave in the end.

Stuff the hat slightly so it keeps it shape.



Make the band around the head. I made a chain of 30sc and attached that to the hat with give or take 20 stitches in between.

# Time to Assemble



## Assemble your Amigurumi

- ❁ Place the eyebrows slightly tilted.
- ❁ Make sure the body is stuffed with fiberfill and keep adding if needed when sewing on the head. Pin the head to the body and use the tail of the body to sew them together. Make sure the belt is on the front.
- ❁ Place the arms on each side of the body between rounds 33-35, with a slight tilt to the front and sew them on.
- ❁ Place the puffs over the arms and sew them secure. Only the rounding see page 6.
- ❁ Place the legs between rounds 10-11 with around 8 stitches apart and sew them onto the body.



Happy  
Crocheting

