

Black cat square bag

Crochet pattern



The required materials and tools:

1. DK weight/ size #3 yarn, I used:

- Alize Cotton Gold Pratica (55% Cotton - 45% Acrylic, 100g (3,53oz)/220m (240yd))
light cream (62), terracotta (36) and black (60) colors

2. 2.5 mm crochet hook

3. Scissors

4. Tapestry needle

Abbreviations (US):

Ch - chain

Sc – single crochet

The finished bag using the materials stated in this pattern is ~9 inches / 23 cm in height and ~9.4 inches / 24 cm in width.

Tips before starting:

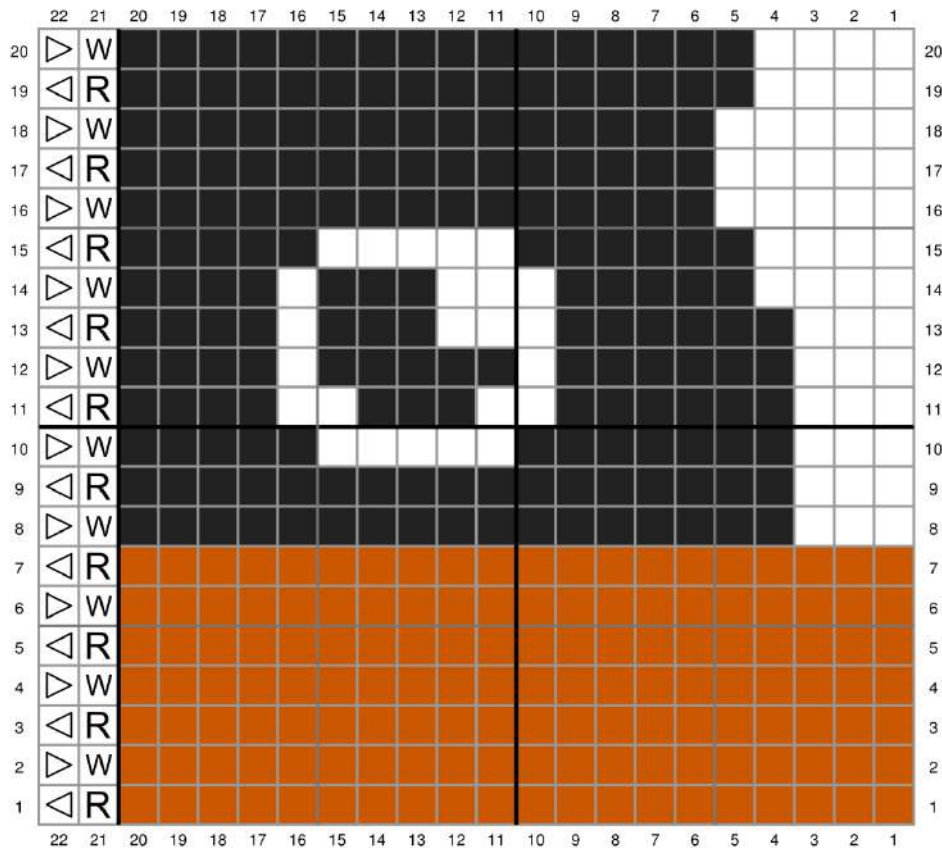
The bag is crocheted in the Intarsia crochet technique. If you did not crochet in this technique before, watch the YouTube video. You can find different videos on YouTube if needed.

- The front and back parts of the bag are crocheted in single crochet. Each square in the pattern indicates one single crochet.
- The bag is crocheted according to the pattern from bottom to top (see the chart below). The first row is crocheted from right to left.
- Crochet the front and back parts of the bag in back and forth rows (turn as you complete each row).
- Begin each new row with a turning chain.

You can use bobbins (or a piece of cardboard to wrap the yarn around) for crocheting the colored blocks. Add more yarn once the yarn on the bobbin is finished. You can use as many bobbins as you like. Before starting work, you should have ready bobbins in pearl and rose colors.

Try not to pull the yarn too tight when changing colors, but also do not let it be too loose so that there are no gaps.

Below you can find a small excerpt of the chart on how to change the colors on the front and wrong sides.



- R Right Side - NO tails on this side
- W Wrong Side - Keep ALL tails on this side while crocheting
- ◁ Read graph from right to left
- ▷ Read graph from left to right

See below, how to change the color in the eleventh row on the front side.









See below, how to change the color in the twelfth row on the wrong side.









See below, how the ready part in 12 rows looks.



See how the ready part on the wrong side looks.



Hide all yarn tails on the wrong side with the help of the needle.

See how the ready part looks on the front and wrong sides.



Start crocheting the front side of the bag. Chain 61 with **terracotta yarn**. Start working in the second chain from the hook as follows in the chart below.

After the end of each row turn and ch 1. The ch 1 does not count as a stitch.

- ← **Row 1 [RS]:** (terracotta) x 60
- **Row 2 [WS]:** (terracotta) x 60
- ← **Row 3 [RS]:** (terracotta) x 60
- **Row 4 [WS]:** (terracotta) x 60
- ← **Row 5 [RS]:** (terracotta) x 60
- **Row 6 [WS]:** (terracotta) x 60
- ← **Row 7 [RS]:** (terracotta) x 60
- **Row 8 [WS]:** (terracotta) x 60
- ← **Row 9 [RS]:** (terracotta) x 60
- **Row 10 [WS]:** (terracotta) x 60
- ← **Row 11 [RS]:** (terracotta) x 60
- **Row 12 [WS]:** (terracotta) x 60
- ← **Row 13 [RS]:** (terracotta) x 60
- **Row 14 [WS]:** (terracotta) x 60
- ← **Row 15 [RS]:** (terracotta) x 60
- **Row 16 [WS]:** (terracotta) x 60
- ← **Row 17 [RS]:** (terracotta) x 60
- **Row 18 [WS]:** (terracotta) x 60
- ← **Row 19 [RS]:** (terracotta) x 60
- **Row 20 [WS]:** (terracotta) x 60
- ← **Row 21 [RS]:** (terracotta) x 60
- **Row 22 [WS]:** (terracotta) x 60
- ← **Row 23 [RS]:** (terracotta) x 60
- **Row 24 [WS]:** (terracotta) x 60
- ← **Row 25 [RS]:** (terracotta) x 60
- **Row 26 [WS]:** (light cream) x 12, (black) x 36, (light cream) x 12

← **Row 27 [RS]:** (light cream) x 12, (black) x 36, (light cream) x 12

→ **Row 28 [WS]:** (light cream) x 12, (black) x 7, (light cream) x 5, (black) x 12, (light cream) x 5, (black) x 7, (light cream) x 12

← **Row 29 [RS]:** (light cream) x 12, (black) x 6, (light cream) x 2, (black) x 3, (light cream) x 2, (black) x 10, (light cream) x 2, (black) x 3, (light cream) x 2, (black) x 6, (light cream) x 12

→ **Row 30 [WS]:** (light cream) x 12, (black) x 6, (light cream) x 1, (black) x 5, (light cream) x 1, (black) x 10, (light cream) x 1, (black) x 5, (light cream) x 1, (black) x 6, (light cream) x 12

← **Row 31 [RS]:** (light cream) x 12, (black) x 6, (light cream) x 3, (black) x 3, (light cream) x 1, (black) x 10, (light cream) x 3, (black) x 3, (light cream) x 1, (black) x 6, (light cream) x 12

→ **Row 32 [WS]:** (light cream) x 13, (black) x 5, (light cream) x 1, (black) x 3, (light cream) x 3, (black) x 10, (light cream) x 1, (black) x 3, (light cream) x 3, (black) x 5, (light cream) x 13

← **Row 33 [RS]:** (light cream) x 13, (black) x 6, (light cream) x 5, (black) x 12, (light cream) x 5, (black) x 6, (light cream) x 13

→ **Row 34 [WS]:** (light cream) x 14, (black) x 32, (light cream) x 14

← **Row 35 [RS]:** (light cream) x 14, (black) x 32, (light cream) x 14

→ **Row 36 [WS]:** (light cream) x 14, (black) x 32, (light cream) x 14

← **Row 37 [RS]:** (light cream) x 13, (black) x 34, (light cream) x 13

→ **Row 38 [WS]:** (light cream) x 13, (black) x 34, (light cream) x 13

← **Row 39 [RS]:** (light cream) x 13, (black) x 34, (light cream) x 13

→ **Row 40 [WS]:** (light cream) x 12, (black) x 36, (light cream) x 12

← **Row 41 [RS]:** (light cream) x 12, (black) x 36, (light cream) x 12

→ **Row 42 [WS]:** (light cream) x 12, (black) x 36, (light cream) x 12

← **Row 43 [RS]:** (light cream) x 12, (black) x 12, (light cream) x 12, (black) x 12, (light cream) x 12

→ **Row 44 [WS]:** (light cream) x 12, (black) x 9, (light cream) x 18, (black) x 9, (light cream) x 12

- ← **Row 45 [RS]:** (light cream) x 12, (black) x 8, (light cream) x 20, (black) x 8, (light cream) x 12
- **Row 46 [WS]:** (light cream) x 12, (black) x 7, (light cream) x 22, (black) x 7, (light cream) x 12
- ← **Row 47 [RS]:** (light cream) x 12, (black) x 6, (light cream) x 24, (black) x 6, (light cream) x 12
- **Row 48 [WS]:** (light cream) x 13, (black) x 3, (light cream) x 28, (black) x 3, (light cream) x 13
- ← **Row 49 [RS]:** (light cream) x 60
- **Row 50 [WS]:** (light cream) x 60
- ← **Row 51 [RS]:** (light cream) x 60
- **Row 52 [WS]:** (light cream) x 60
- ← **Row 53 [RS]:** (light cream) x 60
- **Row 54 [WS]:** (light cream) x 60
- ← **Row 55 [RS]:** (light cream) x 60
- **Row 56 [WS]:** (light cream) x 60
- ← **Row 57 [RS]:** (light cream) x 60
- **Row 58 [WS]:** (light cream) x 60
- ← **Row 59 [RS]:** (light cream) x 60
- **Row 60 [WS]:** (light cream) x 60

Once the last row is finished, fasten off, and hide the yarn tail.



black



light cream



terracotta



Right Side - NO tails on this side



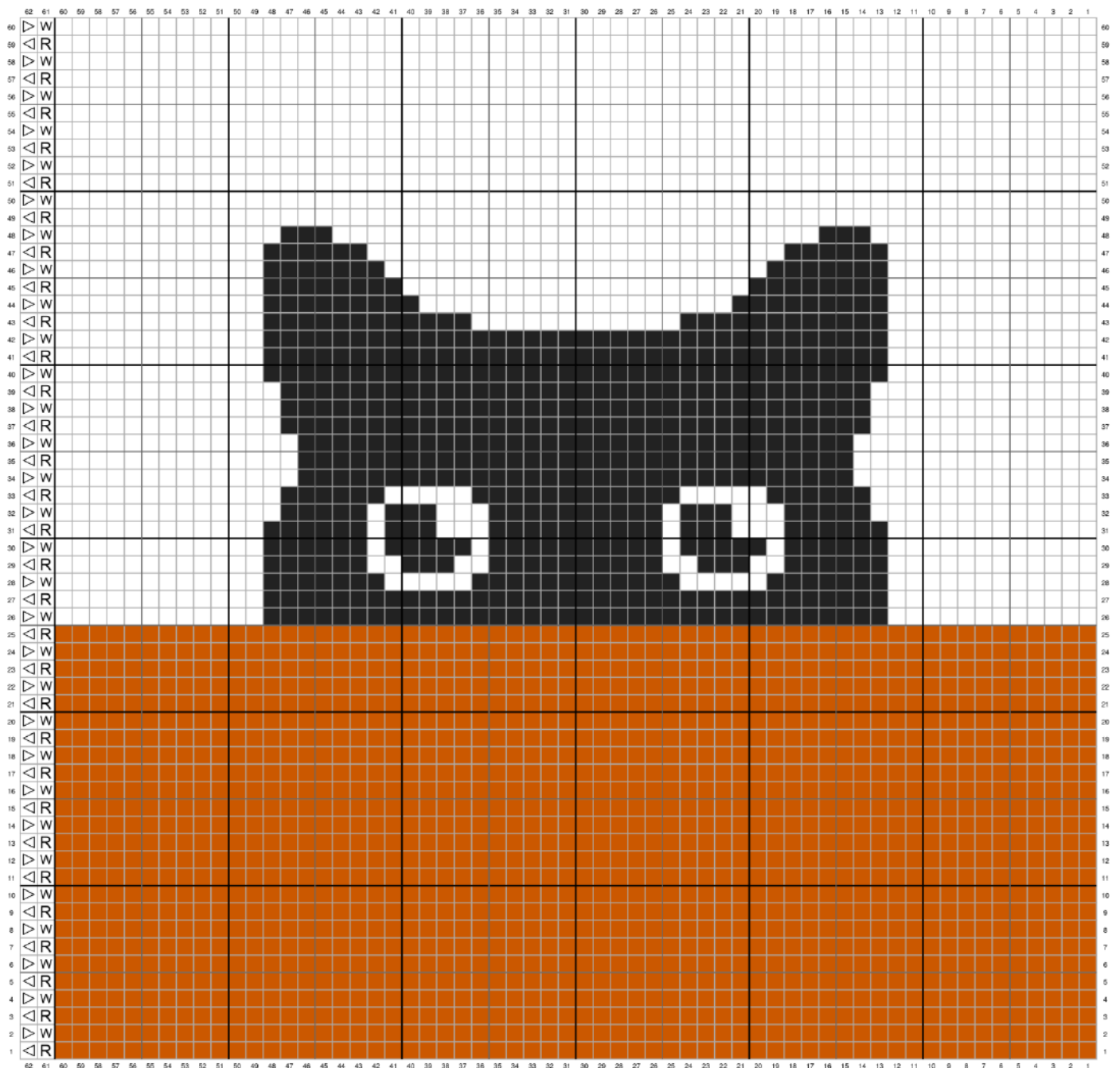
Wrong Side - Keep ALL tails on this side while crocheting



Read graph from right to left



Read graph from left to right



See below, how the front and wrong sides looks.



The back part of the bag

Chain 61 with **terracotta yarn**. Start working in the second chain from the hook as follows in the chart below.

After the end of each row turn and ch 1. The ch 1 does not count as a stitch.

- ← **Row 1 [RS]:** (terracotta) x 12, (black) x 36, (terracotta) x 12
- **Row 2 [WS]:** (terracotta) x 12, (black) x 36, (terracotta) x 12
- ← **Row 3 [RS]:** (terracotta) x 12, (black) x 36, (terracotta) x 12
- **Row 4 [WS]:** (terracotta) x 13, (black) x 34, (terracotta) x 13
- ← **Row 5 [RS]:** (terracotta) x 13, (black) x 34, (terracotta) x 13
- **Row 6 [WS]:** (terracotta) x 14, (black) x 32, (terracotta) x 14
- ← **Row 7 [RS]:** (terracotta) x 14, (black) x 32, (terracotta) x 14
- **Row 8 [WS]:** (terracotta) x 15, (black) x 30, (terracotta) x 15
- ← **Row 9 [RS]:** (terracotta) x 15, (black) x 30, (terracotta) x 15
- **Row 10 [WS]:** (terracotta) x 16, (black) x 28, (terracotta) x 16
- ← **Row 11 [RS]:** (terracotta) x 16, (black) x 28, (terracotta) x 16
- **Row 12 [WS]:** (terracotta) x 17, (black) x 26, (terracotta) x 17
- ← **Row 13 [RS]:** (terracotta) x 18, (black) x 24, (terracotta) x 18
- **Row 14 [WS]:** (terracotta) x 19, (black) x 22, (terracotta) x 19
- ← **Row 15 [RS]:** (terracotta) x 19, (black) x 22, (terracotta) x 19
- **Row 16 [WS]:** (terracotta) x 17, (black) x 26, (terracotta) x 17
- ← **Row 17 [RS]:** (terracotta) x 16, (black) x 28, (terracotta) x 16
- **Row 18 [WS]:** (terracotta) x 15, (black) x 30, (terracotta) x 15
- ← **Row 19 [RS]:** (terracotta) x 14, (black) x 32, (terracotta) x 14
- **Row 20 [WS]:** (terracotta) x 13, (black) x 34, (terracotta) x 13
- ← **Row 21 [RS]:** (terracotta) x 13, (black) x 34, (terracotta) x 13
- **Row 22 [WS]:** (terracotta) x 12, (black) x 36, (terracotta) x 12
- ← **Row 23 [RS]:** (terracotta) x 12, (black) x 36, (terracotta) x 12
- **Row 24 [WS]:** (terracotta) x 12, (black) x 36, (terracotta) x 12
- ← **Row 25 [RS]:** (terracotta) x 12, (black) x 36, (terracotta) x 12
- **Row 26 [WS]:** (light cream) x 12, (black) x 36, (light cream) x 12
- ← **Row 27 [RS]:** (light cream) x 12, (black) x 36, (light cream) x 12
- **Row 28 [WS]:** (light cream) x 12, (black) x 36, (light cream) x 12
- ← **Row 29 [RS]:** (light cream) x 12, (black) x 36, (light cream) x 12
- **Row 30 [WS]:** (light cream) x 12, (black) x 36, (light cream) x 12
- ← **Row 31 [RS]:** (light cream) x 12, (black) x 36, (light cream) x 12
- **Row 32 [WS]:** (light cream) x 13, (black) x 34, (light cream) x 13

- ← **Row 33 [RS]:** (light cream) x 13, (black) x 34, (light cream) x 13
- **Row 34 [WS]:** (light cream) x 14, (black) x 32, (light cream) x 14
- ← **Row 35 [RS]:** (light cream) x 14, (black) x 32, (light cream) x 14
- **Row 36 [WS]:** (light cream) x 14, (black) x 32, (light cream) x 14
- ← **Row 37 [RS]:** (light cream) x 13, (black) x 34, (light cream) x 13
- **Row 38 [WS]:** (light cream) x 13, (black) x 34, (light cream) x 13
- ← **Row 39 [RS]:** (light cream) x 13, (black) x 34, (light cream) x 13
- **Row 40 [WS]:** (light cream) x 12, (black) x 36, (light cream) x 12
- ← **Row 41 [RS]:** (light cream) x 12, (black) x 36, (light cream) x 12
- **Row 42 [WS]:** (light cream) x 12, (black) x 36, (light cream) x 12
- ← **Row 43 [RS]:** (light cream) x 12, (black) x 12, (light cream) x 12, (black) x 12, (light cream) x 12
- **Row 44 [WS]:** (light cream) x 12, (black) x 9, (light cream) x 18, (black) x 9, (light cream) x 12
- ← **Row 45 [RS]:** (light cream) x 12, (black) x 8, (light cream) x 20, (black) x 8, (light cream) x 12
- **Row 46 [WS]:** (light cream) x 12, (black) x 7, (light cream) x 22, (black) x 7, (light cream) x 12
- ← **Row 47 [RS]:** (light cream) x 12, (black) x 6, (light cream) x 24, (black) x 6, (light cream) x 12
- **Row 48 [WS]:** (light cream) x 13, (black) x 3, (light cream) x 28, (black) x 3, (light cream) x 13
- ← **Row 49 [RS]:** (light cream) x 60
- **Row 50 [WS]:** (light cream) x 60
- ← **Row 51 [RS]:** (light cream) x 60
- **Row 52 [WS]:** (light cream) x 60
- ← **Row 53 [RS]:** (light cream) x 60
- **Row 54 [WS]:** (light cream) x 60
- ← **Row 55 [RS]:** (light cream) x 60
- **Row 56 [WS]:** (light cream) x 60
- ← **Row 57 [RS]:** (light cream) x 60
- **Row 58 [WS]:** (light cream) x 60
- ← **Row 59 [RS]:** (light cream) x 60
- **Row 60 [WS]:** (light cream) x 60

Once the last row is finished, fasten off, and hide the yarn tail.



black



light cream



terracotta



Right Side - NO tails on this side



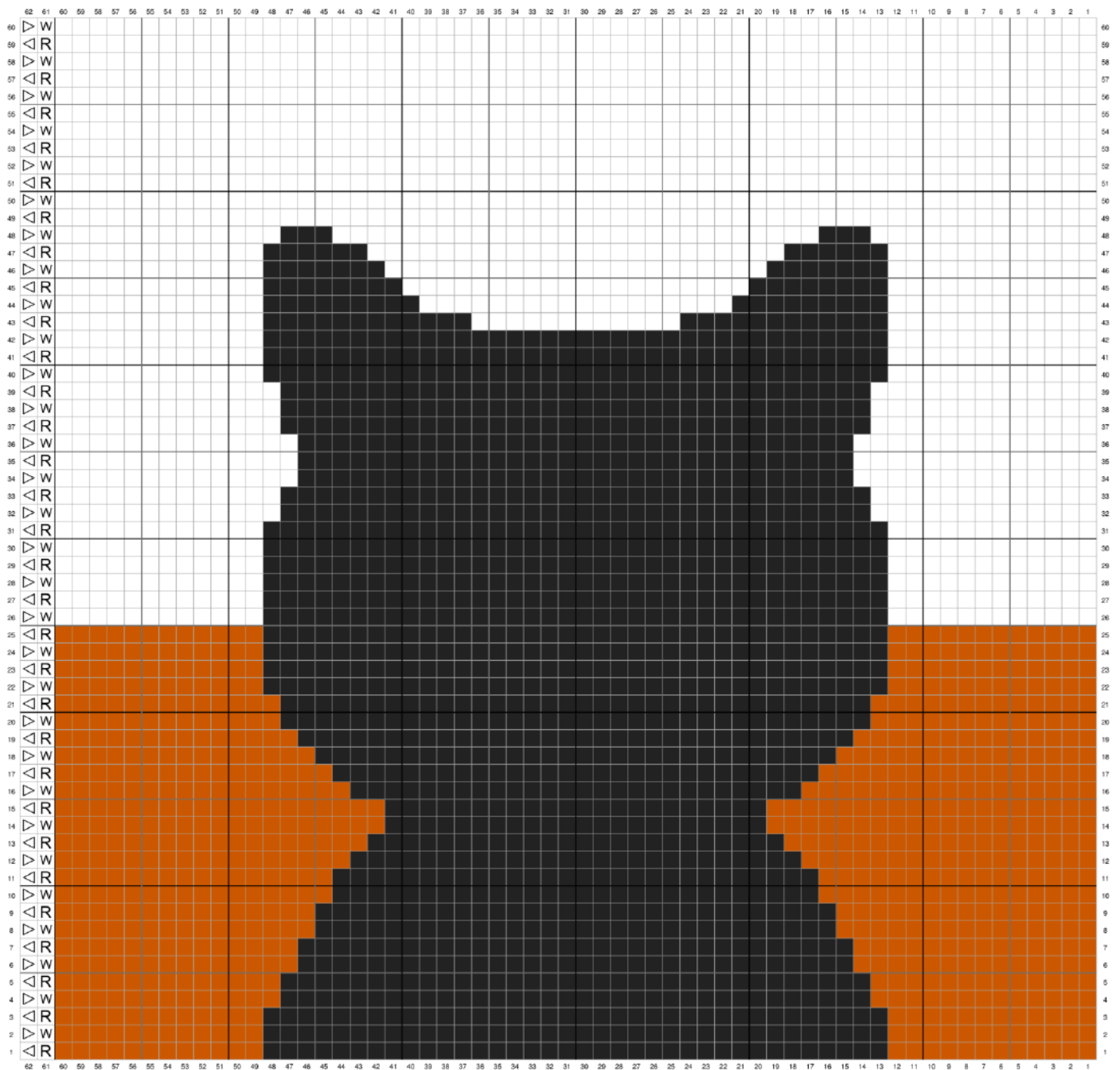
Wrong Side - Keep ALL tails on this side while crocheting



Read graph from right to left



Read graph from left to right



See below, how the front and wrong sides looks.



Handle of the bag

Leave a long tail for sewing at the beginning and end of the row.

Chain 6 with **light cream yarn**. Start working in the second chain from the hook.

1 row: 5 sc, turn

2-199 rows: ch, 5 sc, turn

200 row: ch, 5 sc

Do not cut yarn and crochet one circle round of sc around all handle.

The handle using the materials stated in this pattern is ~35.4 inches / 90 cm in length.

Make the length of the handle as desired.



Assembly

Fold the right side of the parts facing each other.

Sew the front and back sides with a Running stitch.

Turn the bag inside out and sew the handle.



Black cat round bag

Crochet pattern



The required materials and tools:

1. DK weight/ size #3 yarn, I used:

- Gazzal Baby Bamboo (50% acrylic/50% bamboo, 50g (1,76oz)/115m (125yd)) orange (95202) and white (95227) colors

- Gazzal Baby Love (45% acrylic/55% modal, 50g (1,76oz)/115m (125yd)) black (1629) color

2. 2.5 mm crochet hook

3. Scissors

4. Tapestry needle

Abbreviations (US):

Ch - chain

Sc - single crochet

Inc - increase (two sc into one stitch)

Dec - decrease (two sc together)

The finished bag using the materials stated in this pattern is ~8.3 inches / 21 cm in height and ~9 inches / 23 cm in width.

Start crocheting the front side of the bag. Chain 25 with **orange yarn**. Start working in the second chain from the hook as follows in the chart below.

After the end of each row turn and ch 1. The ch 1 does not count as a stitch.

- ← **Row 1 [RS]:** (orange) x 24
- **Row 2 [WS]:** (orange) x 2 inc, 20, 2 inc
- ← **Row 3 [RS]:** (orange) x 2 inc, 24, 2 inc
- **Row 4 [WS]:** (orange) x 2 inc, 28, 2 inc
- ← **Row 5 [RS]:** (orange) x 1 inc, 34, 1 inc
- **Row 6 [WS]:** (orange) x 1 inc, 36, 1 inc
- ← **Row 7 [RS]:** (orange) x 1 inc, 38, 1 inc
- **Row 8 [WS]:** (orange) x 1 inc, 40, 1 inc
- ← **Row 9 [RS]:** (orange) x 1 inc, 42, 1 inc
- **Row 10 [WS]:** (orange) x 1 inc, 44, 1 inc
- ← **Row 11 [RS]:** (orange) x 1 inc, 46, 1 inc
- **Row 12 [WS]:** (orange) x 1 inc, 48, 1 inc
- ← **Row 13 [RS]:** (orange) x 1 inc, 50, 1 inc
- **Row 14 [WS]:** (orange) x 54
- ← **Row 15 [RS]:** (orange) x 1 inc, 52, 1 inc
- **Row 16 [WS]:** (orange) x 56
- ← **Row 17 [RS]:** (orange) x 1 inc, 54, 1 inc
- **Row 18 [WS]:** (orange) x 58
- ← **Row 19 [RS]:** (orange) x 1 inc, 56, 1 inc
- **Row 20 [WS]:** (orange) x 60
- ← **Row 21 [RS]:** (orange) x 60
- **Row 22 [WS]:** (orange) x 60
- ← **Row 23 [RS]:** (orange) x 60
- **Row 24 [WS]:** (orange) x 60
- ← **Row 25 [RS]:** (orange) x 60
- **Row 26 [WS]:** (white) x 12, (black) x 36, (white) x 12
- ← **Row 27 [RS]:** (white) x 12, (black) x 36, (white) x 12
- **Row 28 [WS]:** (white) x 12, (black) x 7, (white) x 5, (black) x 12, (white) x 5, (black) x 7, (white) x 12
- ← **Row 29 [RS]:** (white) x 12, (black) x 6, (white) x 2, (black) x 3, (white) x 2, (black) x 10, (white) x 2, (black) x 3, (white) x 2, (black) x 6, (white) x 12
- **Row 30 [WS]:** (white) x 12, (black) x 6, (white) x 1, (black) x 5, (white) x 1, (black) x 10, (white) x 1, (black) x 5, (white) x 1, (black) x 6, (white) x 12

← **Row 31 [RS]:** (white) x 12, (black) x 6, (white) x 3, (black) x 3, (white) x 1, (black) x 10, (white) x 3, (black) x 3, (white) x 1, (black) x 6, (white) x 12

→ **Row 32 [WS]:** (white) x 13, (black) x 5, (white) x 1, (black) x 3, (white) x 3, (black) x 10, (white) x 1, (black) x 3, (white) x 3, (black) x 5, (white) x 13

← **Row 33 [RS]:** (white) x 13, (black) x 6, (white) x 5, (black) x 12, (white) x 5, (black) x 6, (white) x 13

→ **Row 34 [WS]:** (white) x 14, (black) x 32, (white) x 14

← **Row 35 [RS]:** (white) x 14, (black) x 32, (white) x 14

→ **Row 36 [WS]:** (white) x 14, (black) x 32, (white) x 14

← **Row 37 [RS]:** (white) x 13, (black) x 34, (white) x 13

→ **Row 38 [WS]:** (white) x 13, (black) x 34, (white) x 13

← **Row 39 [RS]:** (white) x 13, (black) x 34, (white) x 13

→ **Row 40 [WS]:** (white) x 12, (black) x 36, (white) x 12

← **Row 41 [RS]:** (white) x 12, (black) x 36, (white) x 12

→ **Row 42 [WS]:** (white) x 12, (black) x 36, (white) x 12

← **Row 43 [RS]:** (white) x 12, (black) x 12, (white) x 12, (black) x 12, (white) x 12

→ **Row 44 [WS]:** (white) x 12, (black) x 9, (white) x 18, (black) x 9, (white) x 12

← **Row 45 [RS]:** (white) x 1 dec, 10, (black) x 8, (white) x 20, (black) x 8, (white) x 10, 1 dec

→ **Row 46 [WS]:** (white) x 11, (black) x 7, (white) x 22, (black) x 7, (white) x 11

← **Row 47 [RS]:** (white) x 1 dec, 9, (black) x 6, (white) x 24, (black) x 6, (white) x 9, 1 dec

→ **Row 48 [WS]:** (white) x 11, (black) x 3, (white) x 28, (black) x 3, (white) x 11

← **Row 49 [RS]:** (white) x 1 dec, 52, 1 dec

→ **Row 50 [WS]:** (white) x 54

← **Row 51 [RS]:** (white) x 1 dec, 50, 1 dec

→ **Row 52 [WS]:** (white) x 52

← **Row 53 [RS]:** (white) x 1 dec, 48, 1 dec

→ **Row 54 [WS]:** (white) x 1 dec, 46, 1 dec

← **Row 55 [RS]:** (white) x 1 dec, 44, 1 dec

→ **Row 56 [WS]:** (white) x 1 dec, 42, 1 dec

← **Row 57 [RS]:** (white) x 1 dec, 40, 1 dec

→ **Row 58 [WS]:** (white) x 1 dec, 38, 1 dec

← **Row 59 [RS]:** (white) x 1 dec, 36, 1 dec

→ **Row 60 [WS]:** (white) x 1 dec, 34, 1 dec

Once the last row is finished, fasten off, and hide the yarn tail.



black



white



orange



Right Side - NO tails on this side



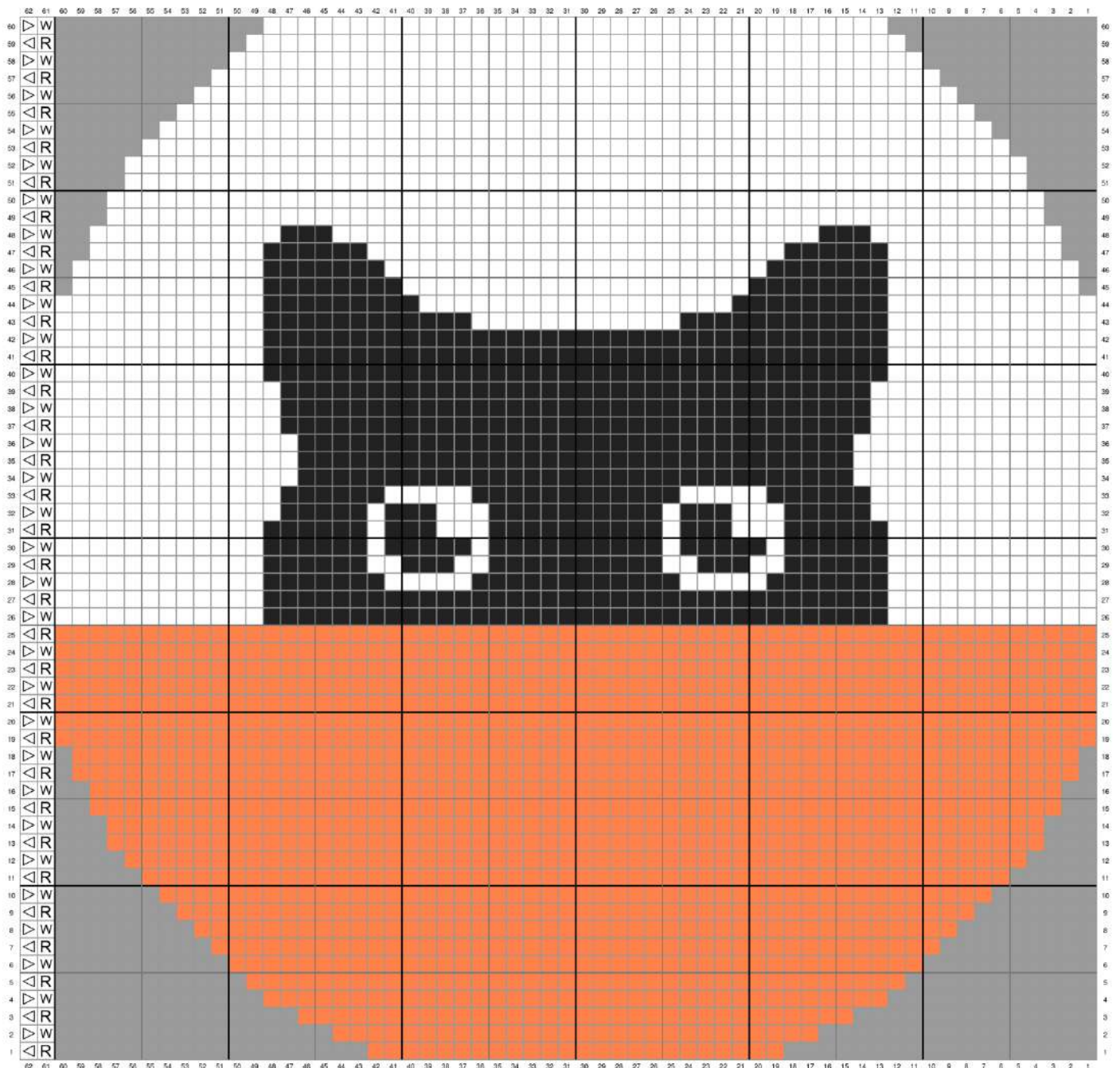
Wrong Side - Keep ALL tails on this side while crocheting



Read graph from right to left



Read graph from left to right



See below, how the front and wrong sides looks.



The back part of the bag

Chain 25 with **black yarn**. Start working in the second chain from the hook as follows in the chart below.

After the end of each row turn and ch 1. The ch 1 does not count as a stitch.

- ← **Row 1 [RS]:** (black) x 24
- **Row 2 [WS]:** (black) x 2 inc, 20, 2 inc
- ← **Row 3 [RS]:** (black) x 2 inc, 24, 2 inc
- **Row 4 [WS]:** (black) x 2 inc, 28, 2 inc
- ← **Row 5 [RS]:** (orange) x 1 inc, (black) x 34, (orange) x 1 inc,
- **Row 6 [WS]:** (orange) x 1 inc, 2, (black) x 32, (orange) x 2, 1 inc
- ← **Row 7 [RS]:** (orange) x 1 inc, 3, (black) x 32, (orange) x 3, 1 inc
- **Row 8 [WS]:** (orange) x 1 inc, 5, (black) x 30, (orange) x 5, 1 inc
- ← **Row 9 [RS]:** (orange) x 1 inc, 6, (black) x 30, (orange) x 6, 1 inc
- **Row 10 [WS]:** (orange) x 1 inc, 8, (black) x 28, (orange) x 8, 1 inc
- ← **Row 11 [RS]:** (orange) x 1 inc, 9, (black) x 28, (orange) x 9, 1 inc
- **Row 12 [WS]:** (orange) x 1 inc, 11, (black) x 26, (orange) x 11, 1 inc
- ← **Row 13 [RS]:** (orange) x 1 inc, 13, (black) x 24, (orange) x 13, 1 inc
- **Row 14 [WS]:** (orange) x 16, (black) x 22, (orange) x 16
- ← **Row 15 [RS]:** (orange) x 1 inc, 15, (black) x 22, (orange) x 15, 1 inc
- **Row 16 [WS]:** (orange) x 15, (black) x 26, (orange) x 15
- ← **Row 17 [RS]:** (orange) x 1 inc, 13, (black) x 28, (orange) x 13, 1 inc
- **Row 18 [WS]:** (orange) x 14, (black) x 30, (orange) x 14
- ← **Row 19 [RS]:** (orange) x 1 inc, 12, (black) x 32, (orange) x 12, 1 inc
- **Row 20 [WS]:** (orange) x 13, (black) x 34, (orange) x 13
- ← **Row 21 [RS]:** (orange) x 13, (black) x 34, (orange) x 13
- **Row 22 [WS]:** (orange) x 12, (black) x 36, (orange) x 12
- ← **Row 23 [RS]:** (orange) x 12, (black) x 36, (orange) x 12
- **Row 24 [WS]:** (orange) x 12, (black) x 36, (orange) x 12
- ← **Row 25 [RS]:** (orange) x 12, (black) x 36, (orange) x 12
- **Row 26 [WS]:** (white) x 12, (black) x 36, (white) x 12
- ← **Row 27 [RS]:** (white) x 12, (black) x 36, (white) x 12
- **Row 28 [WS]:** (white) x 12, (black) x 36, (white) x 12
- ← **Row 29 [RS]:** (white) x 12, (black) x 36, (white) x 12
- **Row 30 [WS]:** (white) x 12, (black) x 36, (white) x 12
- ← **Row 31 [RS]:** (white) x 12, (black) x 36, (white) x 12
- **Row 32 [WS]:** (white) x 13, (black) x 34, (white) x 13

← **Row 33 [RS]:** (white) x 13, (black) x 34, (white) x 13
 → **Row 34 [WS]:** (white) x 14, (black) x 32, (white) x 14
 ← **Row 35 [RS]:** (white) x 14, (black) x 32, (white) x 14
 → **Row 36 [WS]:** (white) x 14, (black) x 32, (white) x 14
 ← **Row 37 [RS]:** (white) x 13, (black) x 34, (white) x 13
 → **Row 38 [WS]:** (white) x 13, (black) x 34, (white) x 13
 ← **Row 39 [RS]:** (white) x 13, (black) x 34, (white) x 13
 → **Row 40 [WS]:** (white) x 12, (black) x 36, (white) x 12
 ← **Row 41 [RS]:** (white) x 12, (black) x 36, (white) x 12
 → **Row 42 [WS]:** (white) x 12, (black) x 36, (white) x 12
 ← **Row 43 [RS]:** (white) x 12, (black) x 12, (white) x 12, (black) x 12, (white) x 12
 → **Row 44 [WS]:** (white) x 12, (black) x 9, (white) x 18, (black) x 9, (white) x 12
 ← **Row 45 [RS]:** (white) x 1 dec, 10, (black) x 8, (white) x 20, (black) x 8, (white) x 10, 1 dec
 → **Row 46 [WS]:** (white) x 11, (black) x 7, (white) x 22, (black) x 7, (white) x 11
 ← **Row 47 [RS]:** (white) x 1 dec, 9, (black) x 6, (white) x 24, (black) x 6, (white) x 9, 1 dec
 → **Row 48 [WS]:** ((white) x 11, (black) x 3, (white) x 28, (black) x 3, (white) x 1
 ← **Row 49 [RS]:** (white) x 1 dec, 52, 1 dec
 → **Row 50 [WS]:** (white) x 54
 ← **Row 51 [RS]:** (white) x 1 dec, 50, 1 dec
 → **Row 52 [WS]:** (white) x 52
 ← **Row 53 [RS]:** ((white) x 1 dec, 48, 1 dec
 → **Row 54 [WS]:** (white) x 1 dec, 46, 1 dec
 ← **Row 55 [RS]:** (white) x 1 dec, 44, 1 dec
 → **Row 56 [WS]:** (white) x 1 dec, 42, 1 dec
 ← **Row 57 [RS]:** (white) x 1 dec, 40, 1 dec
 → **Row 58 [WS]:** (white) x 1 dec, 38, 1 dec
 ← **Row 59 [RS]:** (white) x 1 dec, 36, 1 dec
 → **Row 60 [WS]:** (white) x 1 dec, 34, 1 dec

Once the last row is finished, fasten off, and hide the yarn tail.



black



white



orange



Right Side - NO tails on this side



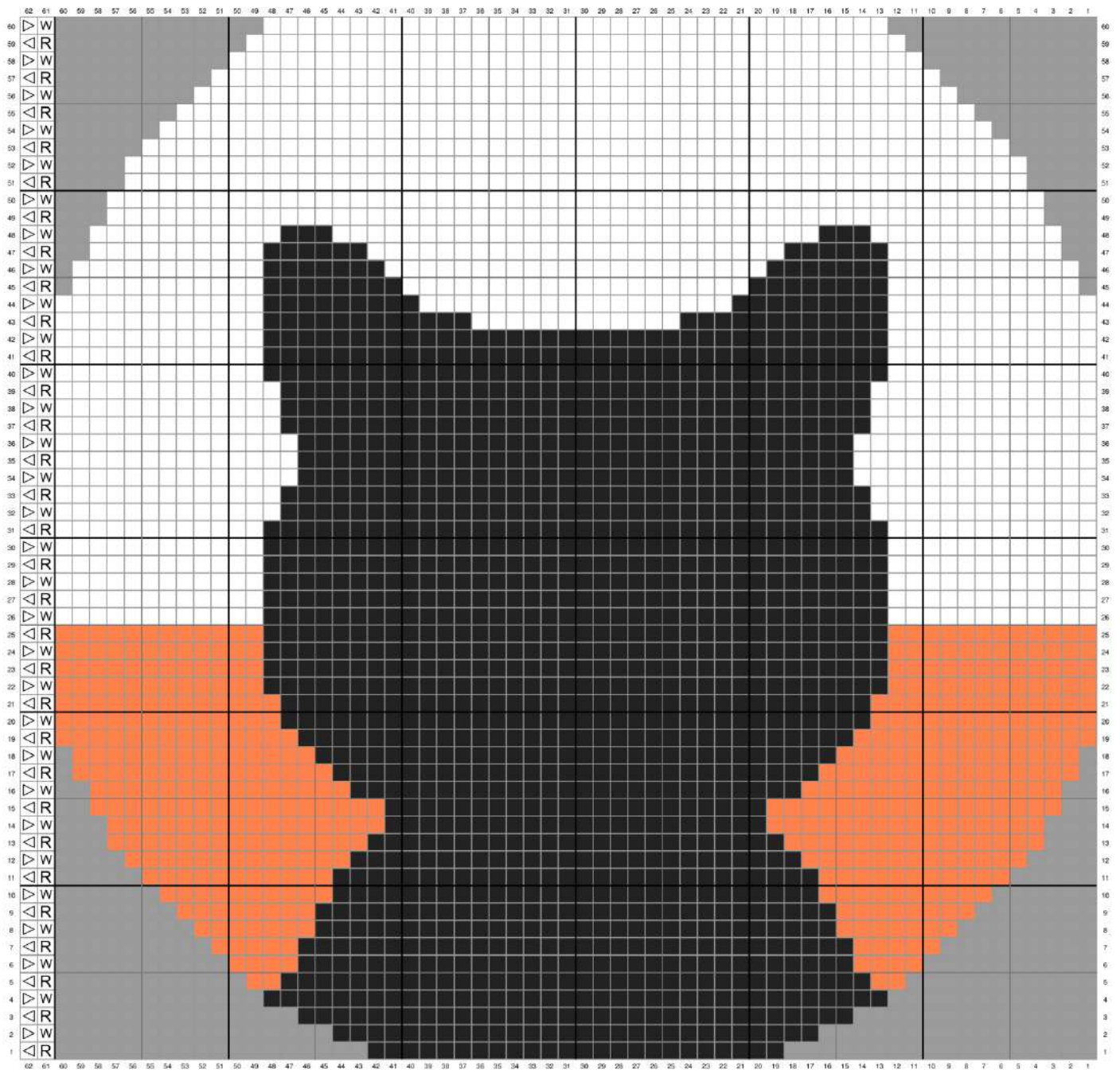
Wrong Side - Keep ALL tails on this side while crocheting



Read graph from right to left



Read graph from left to right



See below, how the front and wrong sides looks.



Handle of the bag

Leave a long tail for sewing at the beginning and end of the row.

Chain 6 with **white yarn**. Start working in the second chain from the hook.

1 row: 5 sc, turn

2-209 rows: ch, 5 sc, turn

210 row: ch, 5 sc

Do not cut yarn and crochet one circle round of sc around all handle.

The handle using the materials stated in this pattern is ~35.4 inches / 90 cm in length.

Make the length of the handle as desired.



Assembly

Fold the right side of the parts facing each other.

Sew the front and back sides with a Running stitch.

Turn the bag inside out and sew the handle.

