

# BUTTERFLY BAG

Crochet Pattern



# MATERIALS

*Crochet hook 4.5 mm*

*Yarn needle and scissors*

*Acrylic/ Cotton yarn in Medium weight  
(size 4)*

*The pictured bag was made in a mix of acrylic yarn for 166g and cotton yarn for the border & strap for 330g.*

# ABBREVIATIONS

*Ch - chain*

*Sc - single crochet stitch*

*Dc - double crochet stitch*

*Tr - treble crochet*

*Inc - 2 stitches in one stitch*

*Sc3tog - single crochet 3 together*

*Hdc3tog - half double crochet 3 together*

*Sl st - slip stitch*

*St(s) - stitch(es)*

*TO - turn over*

# DESCRIPTION

*Skilled level: **Intermediate.***

*This pattern starts with making two butterflies, then crocheting the strap, and connecting all parts together.*

*Crochet with your **right side out** for all parts, meaning the tail from the foundation row is on the **left**.*

*Ch 1 counts as turning chain and Ch 3 counts as 1 dc.*

*Ch 3 = 1 dc = 1 stitch*

*Ch 3 at the end of the row = 1st stitch for the dc row.*

*In all dc rows, start from the **2nd** stitch.*

*Weave in the loose ends as work progresses.*

*You can add a lining if using soft yarn so it does not stretch too much.*

# COLOR CHANGING

*Stop crocheting before pulling through the last 2 loops on the hook. Drop the old color of yarn.*

*Lay the new yarn over the hook, and pull the new color through the last 2 loops to complete the stitch. Then continue crocheting with the new yarn.*

*If you're done with the old yarn, fasten off. This works for all stitches.*

## ABDOMEN

***Crochet in rounds.***

***Foundation row: Ch 17,***

***Row 1: sc in the 2nd ch from your hook, sc 14, sc 3 into the next stitch, sc 14, sc inc, sl st and ch 1. (34)***

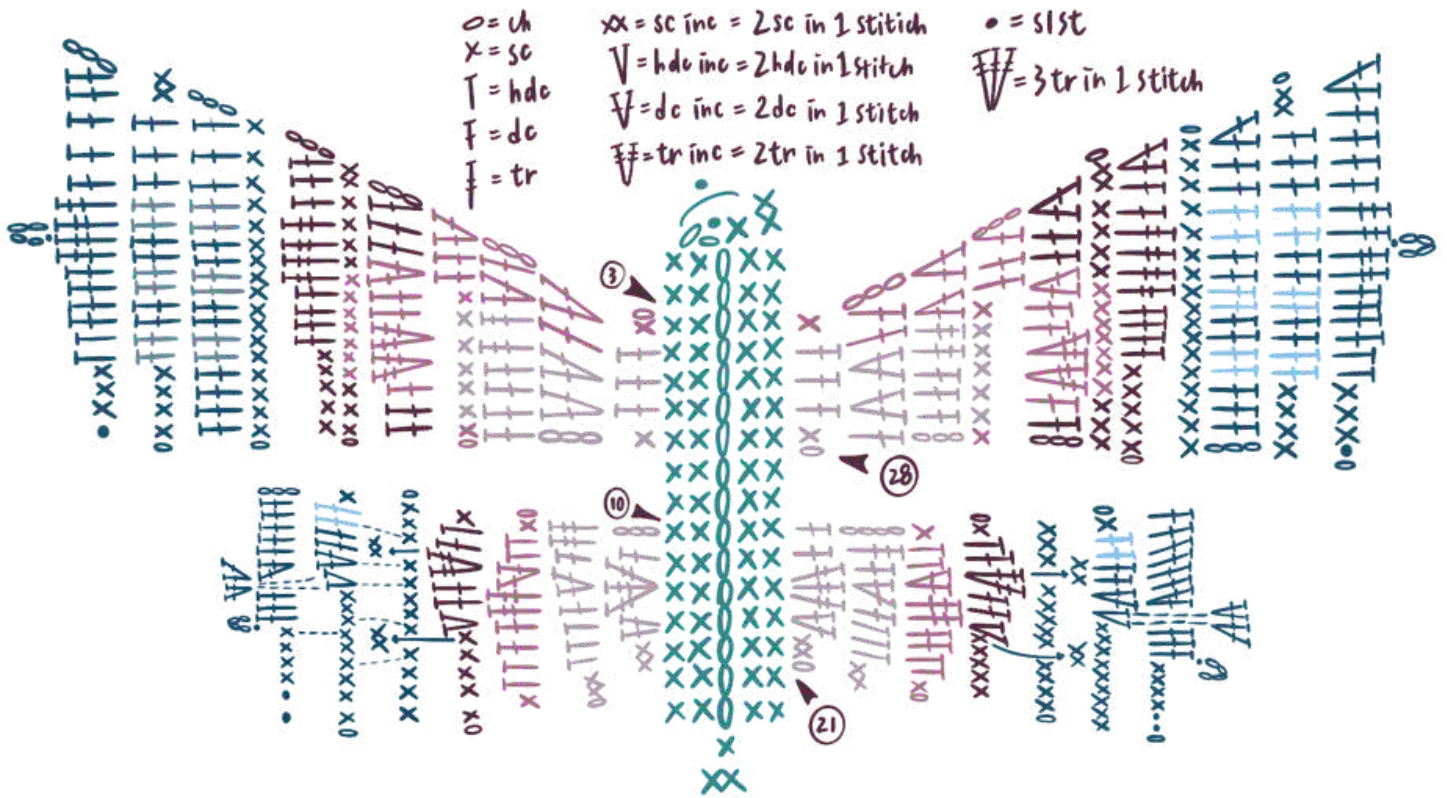
***Row 2: sc 16, sc inc, sc 16, sc inc, sl st and fasten off. (36)***

***Size: 3.5 cm x 12.5 cm***



# FOREWINGS(LEFT)

Graph of the butterfly:



**Colors:** Light purple-1, medium purple-2, dark purple-3, blue-4 and white-5.

Attach your yarn-2 to the **3rd** stitch of the abdomen with the **right side** facing up.

**Row 1:** Insert your hook and make a chain, sc in the same stitch (change to yarn-1), then dc 3, sc 1, ch 3 and TO. **(5)**

**Row 2:** 2 dc inc (change to yarn-2) dc 1, dc inc, ch 3 and TO. **(8)**

# FOREWINGS (L)

**Row 3:** Dc in the same stitch, dc inc (change to yarn-1), tr 2, dc 4 (change to yarn-2), ch 1 and TO. **(10)**

**Row 4:** Sc 1 (change to yarn-1), sc 5 (change to yarn-2), sc 1, dc 2, dc inc (change to yarn-3), ch 3 and TO. **(11)**

**Row 5:** Dc in the same stitch, dc 2 (change to yarn-2), dc inc, dc 2, 2 tr inc, dc 1 (change to yarn-3), dc 2, ch 1 and TO. **(15)**

**Row 6:** Sc 3 (change to yarn-2), sc 7 (change to yarn-3), sc 4, sc inc, ch 3 and TO. **(16)**

**Row 7:** Dc in the same stitch, dc 2, tr 4, dc 4, sc 5 (change to yarn-4), ch 1 and TO. **(17)**

**Row 8:** Sc across the row, ch 3 and TO. **(17)**

# FOREWINGS(L)

**Row 9:** Dc in the same stitch, dc 2 (change to yarn-5), dc 2 (change to yarn-4), dc 2 (change to yarn-5), dc 2 (change to yarn-4), dc 2 (change to yarn-5), dc 2 (change to yarn-4), dc 4, ch 1 and TO. **(18)**

**Row 10:** Sc 4 (change to yarn-5), dc 2 (change to yarn-4), dc 2 (change to yarn-5), dc 2 (change to yarn-4), dc 2 (change to yarn-5), dc 2 (change to yarn-4), dc 3, sc inc, ch 3 and TO. **(19)**

**Row 11:** Dc in the same stitch, dc 4, tr 2, ch 4, sl st to the 2nd tr, tr 2, dc 4, hdc 2, sc 3, sl st and fasten off. **(20)**

**You have finished the the left forewing. Let's work on the right forewing.**

# FOREWINGS (RIGHT)

*Attach yarn-1 to the 28th stitch of the abdomen with the **right side** facing up.*

**Row 1:** *Insert your hook and ch 1, sc in the same stitch, dc 3 (change to yarn-2), sc 1, ch 3 and TO. (5)*

**Row 2:** *Dc in the same stitch, dc 1 (change to yarn-1), 2 dc inc, dc 1, ch 3 and TO. (8)*

**Row 3:** *Dc 3, tr 2 (change to yarn-2), 2 dc inc, ch 3 and TO. (10)*

**Row 4:** *Dc in the same stitch, dc 2, sc 1 (change to yarn-1), sc 5 (change to yarn-2), sc 1 (change to yarn-3), ch 3 and TO. (11)*

**Row 5:** *Dc 1 (change to yarn-2), dc 1, 2 tr inc, dc 2, dc inc (change to yarn-3), dc 2, dc inc, ch 1 and TO. (15)*

**Row 6:** *Sc inc, sc 4 (change to yarn-2), sc 7 (change to yarn-3), sc 3, ch 1 and TO.*

# FOREWINGS(R)



**Row 7:** Sc 5, dc 4, tr 4, dc 2, dc inc  
(change to yarn-4), ch 1 and TO. (17)

**Row 8:** Sc across the row, ch 3 and TO.  
(17)

**Row 9:** Dc 3 (change to yarn-5), dc 2  
(change to yarn-4), dc 2 (change to yarn-  
5), dc 2 (change to yarn-4), dc 2 (change  
to yarn-5), dc 2 (change to yarn-4), dc 2,  
dc inc, ch 1 and TO. (18)

**Row 10:** Sc inc, dc 3 (change to yarn-5),  
dc 2 (change to yarn-4), dc 2 (change to  
yarn-5), dc 2 (change to yarn-4), dc 2  
(change to yarn-5), dc 2 (change to yarn-  
4), sc 4, ch 1 and TO. (19)

**Row 11:** Sl st, sc 3, hdc 2, dc 4, tr 2, ch 4,  
sl st to the 2nd tr, tr 2, dc 4, dc inc and  
fasten off. (20)

# HINDWINGS (LEFT)



Attach your yarn-1 to the **10th** stitch of the abdomen with the **right side** facing up.

**Row 1:** Insert your hook and ch 3, dc in the next stitch, tr 3 in one stitch, dc inc, sc inc, ch 1 and TO. **(9)**

**Row 2:** Sc inc, hdc 3, dc 1, dc inc, dc 1, tr 2 (change to yarn-2), ch 1 and TO. **(11)**

**Row 3:** Sc 1, hdc 2, dc inc, tr 2, dc 2, hdc 2, sc 1 (change to yarn-3), ch 1 and TO. **(12)**

**Row 4:** Sc 5, hdc inc, dc 2, tr inc, dc 1, hdc 1, sc 1 (change to yarn-4), ch 1 and TO. **(14)**

**Row 5:** Sc 3, sc inc, sc 5, sc inc, sc 4, ch 1 and TO. **(16)**

**Row 6:** Sc 9, hdc inc, dc inc, dc 2 (change to yarn-5), dc 2 (change to yarn-4), sc 1, ch 3 and TO. **(18)**

**Row 7:** Dc 5, 3 dc inc, dc 3, ch 4, sl st to the last dc, sc 4, sl st 2 and fasten off. **(21)**

# HINDWINGS (RIGHT)



Attach your yarn-1 to the **21st** stitch of the abdomen with the **right side** facing up.

**Row 1:** Insert your hook and ch 1, sc inc in the same stitch, dc inc, tr 3 in the same stitch, dc 2, ch 4 and TO. **(9)**

**Row 2:** Tr 1, dc 1, dc inc, dc 1, hdc 3, sc inc (change to yarn-2), ch 1 and TO. **(11)**

**Row 3:** Sc 1, hdc 2, dc 2, tr 2, dc inc, hdc 2, sc 1 (change to yarn-3), ch 1 and TO. **(12)**

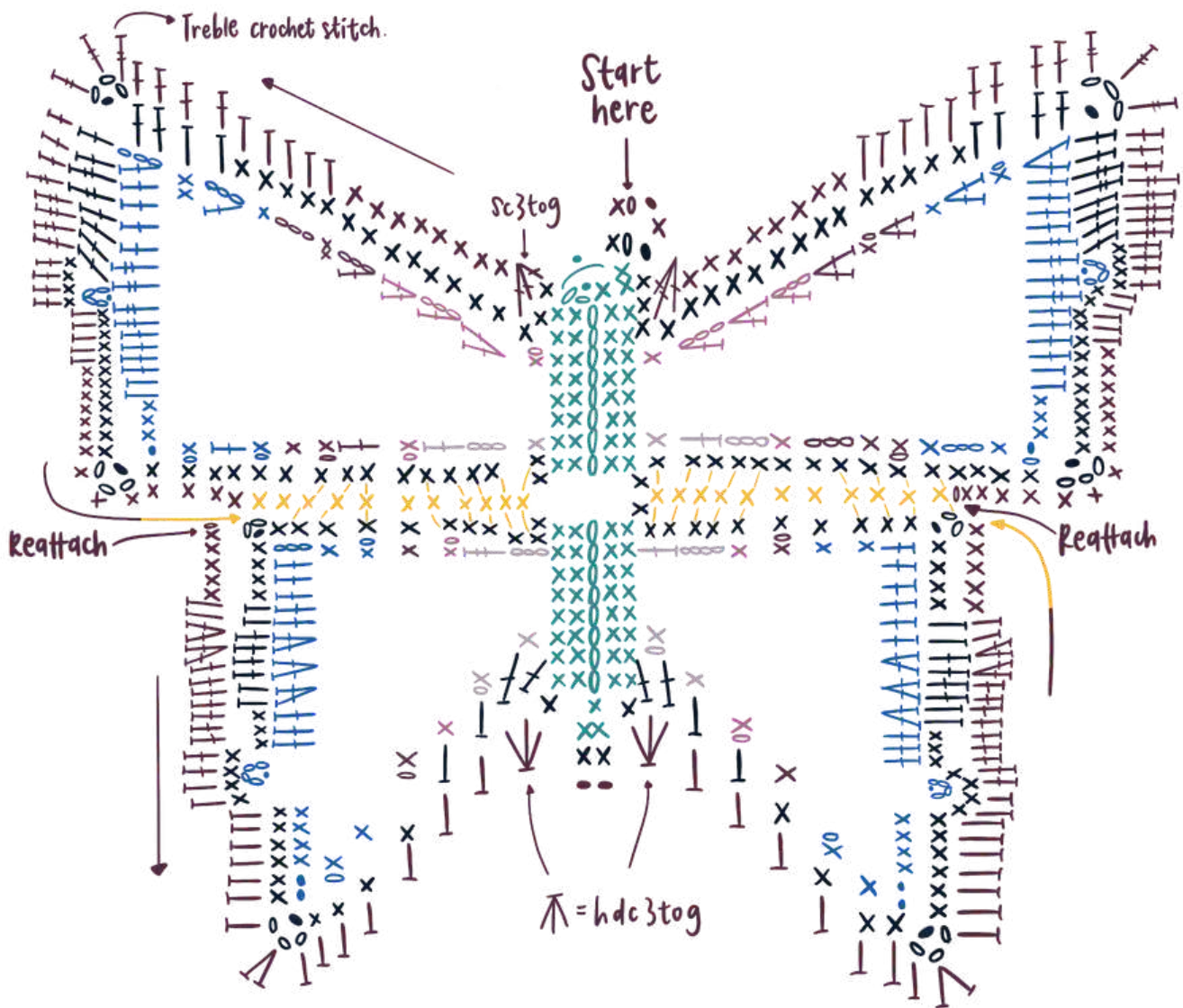
**Row 4:** Sc 1, hdc 1, dc 1, tr inc, dc 2, hdc inc, sc 5 (change to yarn-4), ch 1 and TO. **(14)**

**Row 5:** Sc 4, sc inc, sc 5, sc inc, sc 3, ch 1 and TO. **(16)**

**Row 6:** Sc 1 (change to yarn-5), dc 2 (change to yarn-4), dc 2, dc inc, hdc inc, sc 9, ch 1 and TO. **(18)**

**Row 7:** Sl st 2, sc 4, ch 4, sl st to the 4th sc, dc 3, 3 dc inc, dc 6 and fasten off. **(21)**

# BORDER



Here is the graph of the border. Row 1 is graphed in black. Row 2 is in purple and yellow.

Attach your yarn to the **last stitch** of the abdomen with the **right side** facing up.

# BORDER



**Row 1 (left forewing to the abdomen):** Ch 1, sc 17, hdc 2, dc 2, ch 3, sl st to the 2nd dc, dc in the same stitch, dc 1, tr 2, dc 4, sc 16, ch 3, sl st to last sc, sc in the same stitch, sc 16

**Row 1 (left hindwing to the bottom of the abdomen):** sc 10, ch 2, sl st to the last sc, sc in the same stitch, sc 3, hdc 2, dc 4, hdc 2, sc 13, ch 3, sl st to the last sc, sc in the same stitch, sc 3, hdc 2, dc 2, sc 4, dc 1

**Row 1 (right hindwing to the abdomen):** dc 1, hdc 2, sc 4, ch 3, sl st to the last sc, sc in the same stitch, sc 12, hdc 2, dc 4, hdc 2, sc 4, ch 2, sl st to the last sc, sc in the same stitch, sc 11

**Row 1 (right forewing):** sc 15, ch 3, sl st to the last sc, sc in the same stitch, sc 15, dc 4, tr 2, dc 2, ch 3, sl st to the last dc, dc in the same stitch, dc 1, hdc 2, sc 17, sl st and ch 1. **(214)**

**Row 2:** Sc 1, sc3tog, sc 8, hdc 5, dc 4, tr 3, dc 3, tr 5, dc 4, hdc 5, sc 14,

# BORDER



*then fold the butterflies into half, right sides in, and connect the lower part of the forewing and the top of the hindwing together by sc 11 and fasten it off. (Yellow part of the graph)*

*Attach the yarn to the **2nd ch** of the top left corner of the left hindwing.*

*ch 1, sc in the same stitch, sc 4, hdc 2, 2 dc inc, dc 9, hdc 9, hdc inc, hdc 7, hdc3tog, sl st 2, hdc3tog, hdc 7, hdc inc, hdc 9, dc 9, 2 dc inc, hdc 2, sc 5.*

*Again, connect 2 wings together by sc 11 and fasten off.*

*Attach the yarn to the **4th stitch** counting from the right, after the ch 3, from the bottom of the right forewing.*

*ch 1, sc in the same stitch, sc 13, hdc 5, dc 4, tr 5, dc 3, tr 3, dc 4, hdc 5, sc 8, sc3tog, sc 1, sl st and fasten off. (208)*

***You have now finished 1 butterfly. Make 2 in total. Iron the butterflies if necessary.***

# STRAP

*After finishing 2 butterflies, ch 8 (or till the desired width of the strap), sc in the 2nd ch from your hook, \*sc across, ch 1 and TO\*, repeat till you reach the desired length, **including the border of the butterfly**.*

*Then you may sc/ sl st/ sew the ends of the strap together, with **wrong sides facing up**.*



*Length of the strap should include part of the butterfly bag and the strap itself.*



*First, crochet a long rectangle.*



*Then, connect the ends of the strap together.*

# ASSEMBLY

*Connect the strap and the butterflies by sc from the bottom centre of the abdomen, with **right sides** facing up. After sc across the left side of the butterfly, **continue to sc along the edge of the strap**, then connect back to the top of the right wing, sc across till you reach the bottom of the abdomen again, sl st and fasten off. **Repeat** to connect both butterflies to the strap.*



*Start connecting from the bottom of abdomen.*



*After, connecting one side of the bag, continue to sc along the edge of the strap.*



# YOU ARE DONE!

*I hope you enjoyed this pattern. Tag me in photos with your Butterfly Bag. I would love to see your lovely creations! If you have any questions or concerns*



# TESTERS LOOKBOOK

*- BUTTERFLY BAG -*

**Yarn used:** red heart, both weight 4 and acrylic  
about 310g, with size 3.5 mm hook

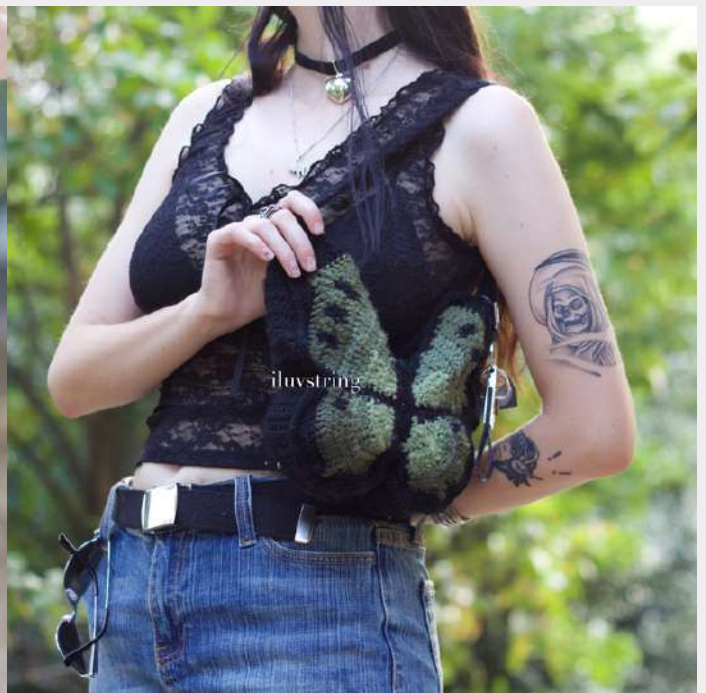
**Size of the bag:** orange butterfly-10.5inches width and  
9inches length; strap is 36inches.  
blue butterfly - 9.5inches width and 10inches length;  
strap is 30inches.



*Yarn used: all acrylic weight 4: black- big twist,  
greens- loops and threads impeccable  
yarns for around 406g*

*Size of the bag: 8inches width and 9inches height*

*Size of strap: 18inches length and 1inch width*



***Yarn used: Weight 4, Acrylic & Cotton for ~200g roughly***  
***Size of the bag: 50inches width and 2inches height***



**Yarn used:** acrylic weight 4, cotton weight 4, bamboo weight 2 doubled up, acrylic fuzzy yarn weight 5/6, acrylic fuzzy yarn weight 7 for 158 grams

**Size of the bag:** 9.5inches width and 10.5inches height

**Size of strap:** 10.5inches length and 1inch width



*Yarn used: 5 ply Milk Cotton yarn  
4 different colors of yarns for approx. 200gr*

*Size of the bag: 24cm x 26cm*

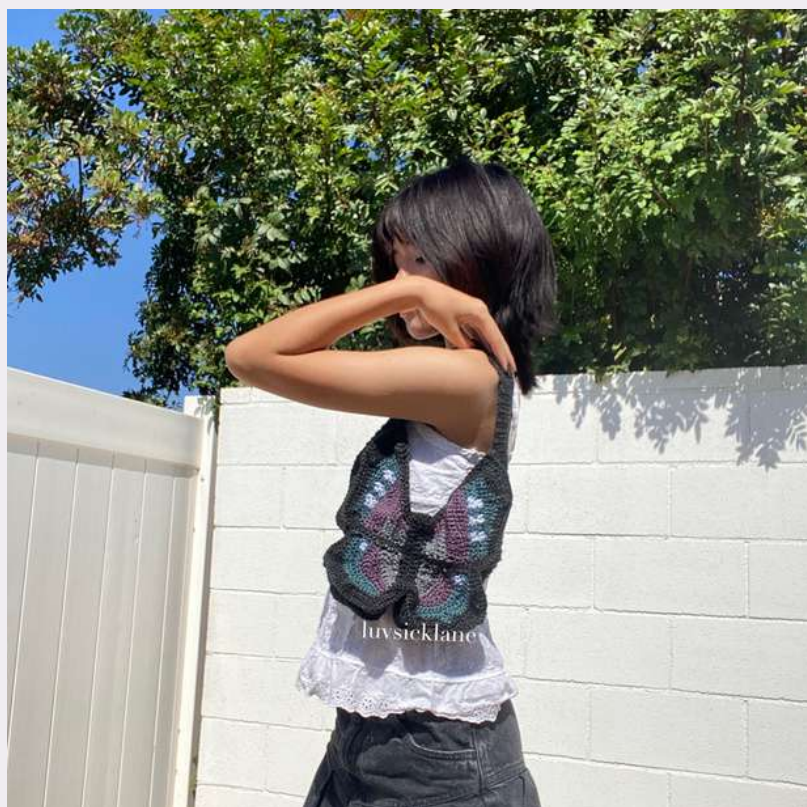
*Size of strap: 130cm x 4 cm*



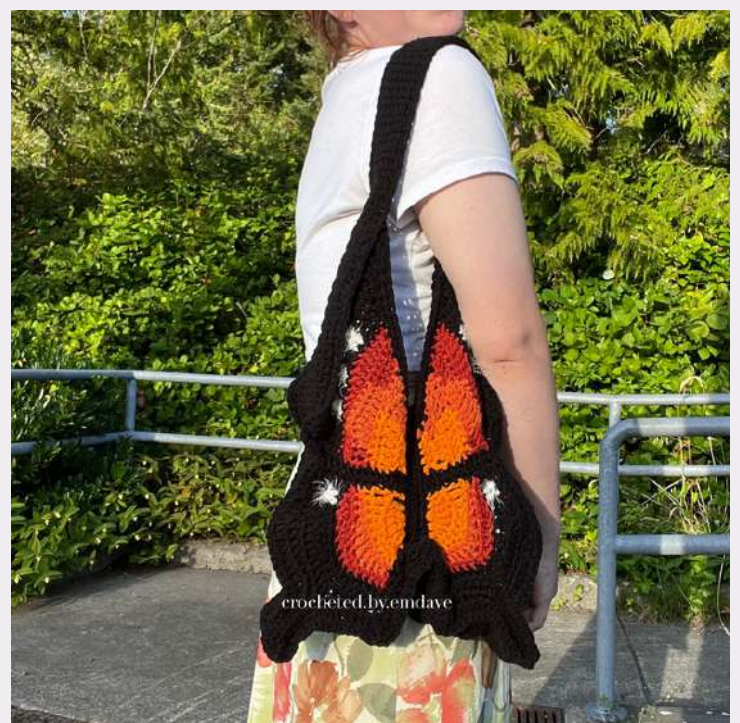
**Yarn used:** daiso, 100% polyester, fine weight yarn for approx. 138g/355.72yd

**Size of the bag:** 8inches width and 8inches height

**Size of strap:** 38inches length and 1.5inch width



**Yarn used:** Red Heart Acrylic, Weight 4  
(for the white i used caron latte cake, weight 4)  
6g yarn-1 (light orange), 8g yarn-2 (orange), 9g yarn-3  
(rust), 180g yarn-4 (black), 2g yarn-5 (white)  
**Size of the bag:** 35cm wide and 40cm across  
**Size of strap:** 6cm wide and 47cm across



**Yarn used:** Impeccable/acrylic/4 for ~200 g total  
**Size of the bag:** 7inches width and 8inches height  
**Size of strap:** 1.5inches width and 46inches length



**Yarn used:** soft rose (loops & treats, acrylic, medium), white (red heart, acrylic, medium), blue (iris, acrylic, medium) \* the other two (dark pink and white with pink) are acrylic and medium for 184g = 358.94m. (soft rose= 108g, blue= 6g, white =24g, dark pink = 40g and white with pink = 6g)

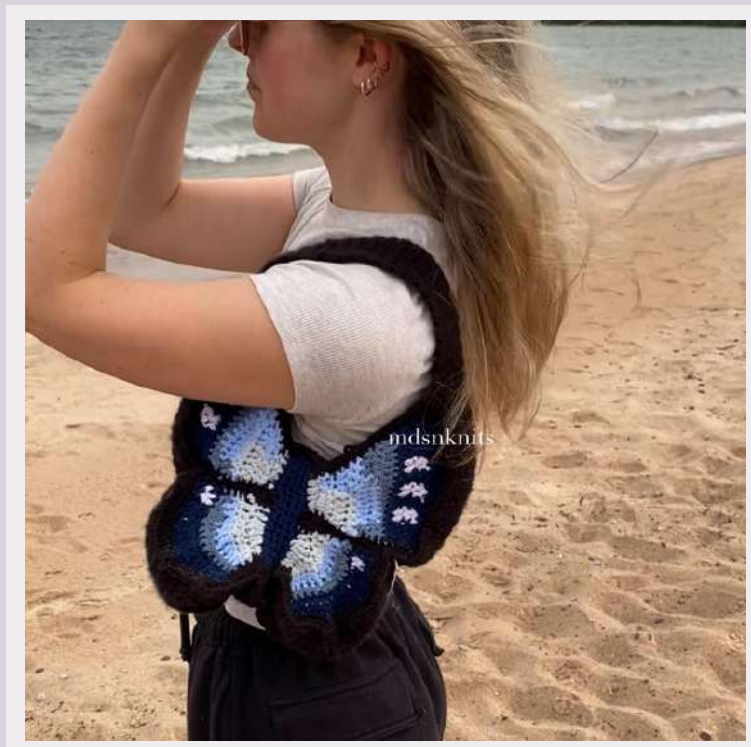
**Size of the bag:** 12inches height and 11inches width

**Size of strap:** 36inches length and 2inches width



*Yarn used: 100% acrylic yarn weight 4*

*Size of strap: 10 stitches width and 13 inches length*



**Yarn used:** Weight 4, 100% cotton yarn (in a mix of combed and chenille) **Body of the butterfly:** 156g mixing combed cotton and chenille cotton. **Border and strap:**

144g only using chenille

**Size of the bag:** 31cm x 36cm

**Size of strap:** 2cm x 34cm





**Yarn used:** King Cole + Acrylic/Wool + DK (2 strands except for the strap itself)

**For the Butterflies 120g and the Border 200g**

**Size of the bag:** 31cm long and 33cm wide

**Size of strap:** 183cm long and 5cm wide

