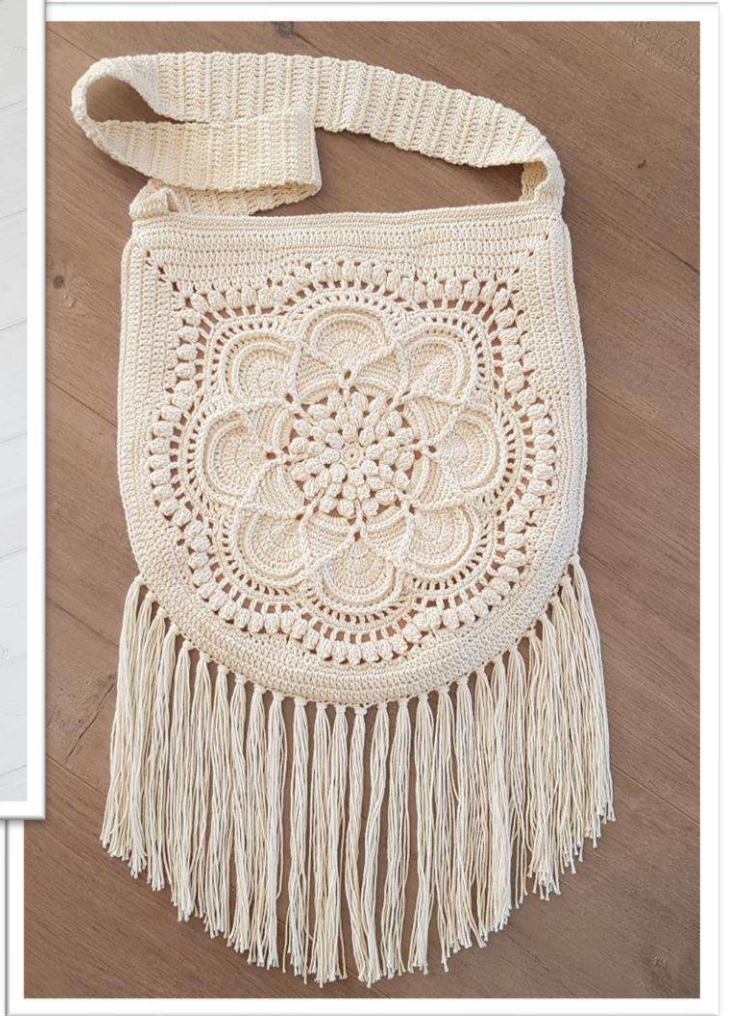


Delilah Boho Bag







Yarn Selection

I understand that not everyone will be able to use the yarn that I have chosen for this design. Availability of stock, cost, country of residence, personal choice, postage... are just some of reasons that you may want to use a different yarn.

The following is some information to help you in making a choice of yarn that will produce the best results.

Keep in mind that when using a different yarn than listed in the table below, the size of the project and the quantity of yarn may vary.

Yarn category: I recommend using a **Sport/Baby/4ply** category yarn. This will create a bag that is approximately 30cm x 30cm (12in x 12in), excluding the strap and the fringe.

If you want a larger bag, I recommend using a DK/Light Worsted/8ply yarn, however yarn quantity will vary.

Yarn composition: This design works best with a **100% cotton or cotton/acrylic** blend. This will ensure that the bag will keep its shape when it is in use.

I do not recommend using an acrylic or wool yarn as this will change shape and stretch over time.

Yarn colour: I like making this bag in **one colour** so that the texture is the star of the show. However, if a variegated yarn or multiple colours is your thing, then go for it!

Samples

Below is a table that lists the project information. This table as a guide only. Yarn quantities and finished project size will vary depending on the yarn and hook size chosen.

| Yarn Category | Yarn | Qty | Hook | Size |
|-----------------|--|-------------------------|------|----------------------------------|
| Sport/Baby/4ply | Bendigo Woollen Mills 4ply 100% cotton, 200g ball | 180g/660yds (1 Ball) | 2mm | 32cm x 32cm (12.6in x 12.6in) |

Other supplies

For this bag you will need a 2cm diameter button and lining fabric. For more information about the lining fabric see the Lining section.

Gauge

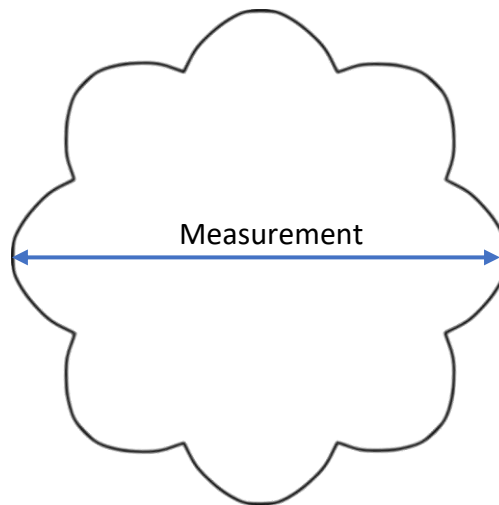
I have listed my measurements for each round in the pattern section.

For measuring, flatten the piece with your hands onto a flat surface. Measurements are taken across the widest diameter or as indicated in the pattern.

The listed measurements are a guide when using Sport/Baby/4ply cotton. If your measurements are different, adjust your hook size or tension as needed.

You can still make the bag if your measurements are different to mine, but the finished bag size, blocking size and the amount of yarn used may vary.

It is important that you block both panels to the same size.



Abbreviations - US stitches

| | |
|-------------|-----------------------------------|
| BL..... | Back Loop |
| BP | Back Post |
| ch | chain |
| CSdc | Chainless Starting double crochet |
| dc | double crochet |
| FP | Front Post |
| hdc | half double crochet |
| sc | single crochet |
| slst..... | slip stitch |
| sp(s) | space(s) |
| st(s) | stitch(es) |
| tog..... | together |
| tr..... | treble crochet |

Symbols

() Work enclosed instructions in the next stitch/space or in the stitch/space indicated.

* * or [] Repeat enclosed instructions as many times as specified.

Underlining Some instructions are underlined to highlight instructions that may be unexpected or that may be easily missed.

Special Stitches

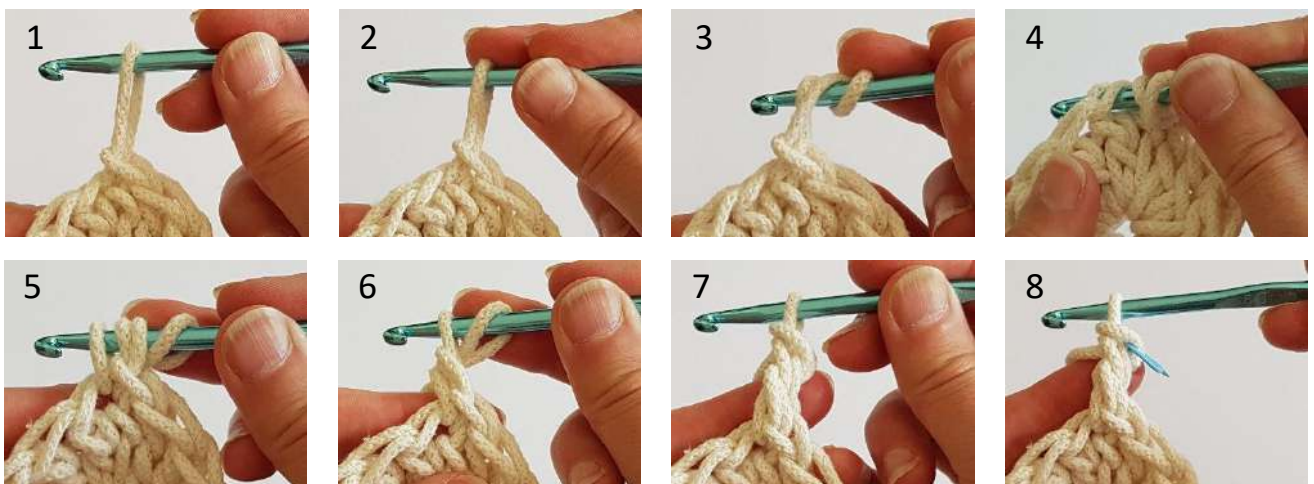
Chainless Starting Double Crochet (CSdc) - CSdc counts as a double crochet.

CSdc replaces the traditional ch3 at the start of a round and produces a consistent look to all double crochet stitches as well as disguising the start of the round better.

This stitch is used at the start of *every* round when the round starts with a double crochet. This includes the first double crochet of every popcorn stitch at the start of the round.

If you find it difficult to master then I recommend you start the round with ch2 then crochet a regular double crochet into the stitch. At the end of the round, skip the ch2 and stitch into the double crochet to join the round.

1. Lengthen the active loop to the height of a double crochet.
2. Place your finger on top of the loop to hold it in place.
3. Wrap the hook counter clockwise around the lengthened loop. (The hook will come towards you then continue around the back of the active loop.)
4. Hook into the stitch.
5. Yarn over, pull through the stitch.
6. Yarn over, pull through 3 loops on the hook.
7. Yarn over, pull through 2 loops on the hook.
8. The CSdc is complete. Mark the CSdc stitch loops to make it easier to find at the end of the round.



Popcorn (PC) - 4 double crochet in the same stitch, drop the loop from the hook, insert hook into the first double crochet, grab the dropped loop and pull it through the stitch on the hook, **ch1 to close**. Ch1 is not counted as a stitch.


Use a CSdc for the first double crochet of all PC at the start of a round.

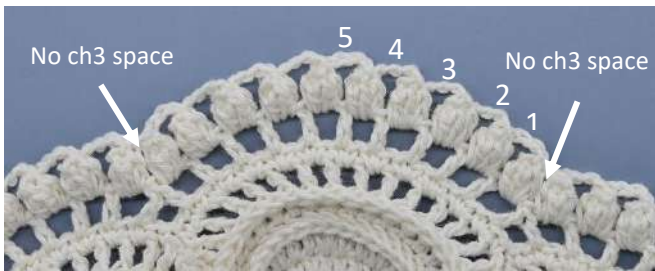
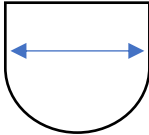
Notes

- ★ Ch1 at the start of the round does not count as a stitch.
- ★ The first stitch of the round goes into the same stitch as the last slip stitch of the previous round unless otherwise indicated.
- ★ If the first stitch of the round is a double crochet, replace it with a Chainless Starting Double (CSdc, see Special Stitches).
- ★ If the first stitch of the round is a popcorn stitch, replace the first double crochet with a CSdc.
- ★ Stitches are separated by a comma. Crochet into the next stitch unless otherwise indicated.
- ★ The number **before** the stitch name indicates to crochet that number of stitches into the same stitch/space. For example, **2dc** means to crochet **2 double crochet into the same stitch/space**.
- ★ The number **after** the stitch name indicates to crochet the stitch into the next number of stitches. For example, **dc x 2** means to crochet a **double crochet into the next 2 stitches**.
- ★ Joining stitches (single or double crochet stitches that join the end of the round to the start of the round, NOT including slip stitches) are counted as the stitches they replace. For example, **ch1, sc in first dc** counts as a ch2 space.

Pattern

| Round | Instructions | Stitch Count | Gauge |
|-------|---|---|-----------------------------|
| 1 | Magic ring Ch1, 16sc into ring, slst in sc | 16 sc | 2cm |
| 2 | Ch1, *sc, ch2, skip 1 sc* x 8, slst in sc, <u>slst in ch2 sp</u> | 8 sc, 8 ch2 sps | 2.5cm |
| 3 | <i>See Special Stitches for PC stitch.</i> (PC, ch2) in each ch2 sp, slst in PC, <u>slst in ch2 sp</u> | 8 PC, 8 ch2 sps | 4.5cm |
| 4 | (PC, ch3, PC) in each ch2 sp, slst in PC, <u>slst in ch2 sp</u> | 16 PC, 8 ch2 sps | 6cm |
| 5 | *(PC, ch5, PC) in ch3 sp, dc between next 2 PC* x 8, slst in PC, <u>slst in ch5 sp</u> | 16 PC, 8 dc, 8 ch5 sps | 8cm |
| 6 | *9dc in ch5 sp, FP <u>tr</u> around dc* x 8, slst in dc | 72 dc, 8 FP <u>tr</u> | 10.5cm |
| 7 | Ch1, *BP <u>sc</u> x 9, (FP <u>tr</u> , ch3, FP <u>tr</u>) around FP <u>tr</u> * x 8, slst in BP <u>sc</u> | Stitch counts are per side for rounds 7-17. 9 BL <u>sc</u> , 2 FP <u>tr</u> , 1 ch3 sp | Measured ch3 to ch3 12cm |
| 8 | Ch1, *sc x 9, FP <u>dc</u> around FP <u>tr</u> , 5dc in ch3 sp, FP <u>dc</u> around FP <u>tr</u> * x 8, slst in sc, <u>slst in next sc</u> | 9 sc, 2 FP <u>dc</u> , 5 dc | 13.5cm |
| 9 | Ch1, *sc x 7, skip 1 sc, FP <u>dc</u> , 2BL <u>dc</u> x 5, FP <u>dc</u> , skip 1 sc* x 8, slst in sc, <u>slst in next sc</u> | 7 sc, 2 FP <u>dc</u> , 10 BL <u>dc</u> | 15.5cm |
| 10 | Ch1, *sc x 5, skip 1 sc, FP <u>dc</u> , [2dc, dc] x 5, FP <u>dc</u> , skip 1 sc* x 8, slst in sc, <u>slst in next sc</u> | 5 sc, 2 FP <u>dc</u> , 15 dc | 17.5cm |
| 11 | Ch1, *sc x 3, skip 1 sc, FP <u>dc</u> , [dc x 2, 2dc] x 5, FP <u>dc</u> , skip 1 sc* x 8, slst in sc, <u>slst in next sc</u> | 3 sc, 2 FP <u>dc</u> , 20 dc | 19.5cm |
| 12 | Ch1, *sc, skip 1 sc, FP <u>dc</u> , BP <u>sc</u> x 20, FP <u>dc</u> , skip 1 sc* x 8, slst in sc, <u>slst in FP<u>dc</u></u> , <u>slst in BP<u>sc</u></u> | 1 sc, 2 FP <u>dc</u> , 20 BP <u>sc</u> | 19.5cm |

| | | | |
|----|--|---------------------------------------|------|
| 13 | *dc x 20, FPdc2tog using next 2 FPdc (skipping sc)* x 8, slst in dc, <u>slst in next 3 dc</u> | 20 dc, 1 FPdc2tog | 21cm |
| 14 | <i>Replace the first BPdc of the round with (BPsc, ch2)</i> Ch1, *[BPdc, ch1] x 14, BPdc6tog using next 6 dc (skipping dc2tog), ch1* x 8, slst in top ch2, <u>slst in ch1 space</u> | 14 BPdc, 1 BPdc6tog, 15 ch1 sps | 24cm |
| 15 | <i>Mark the 3rd sc in each set.</i> Ch1, *sc in ch1 sp, 2sc in next 11 ch1 sps, sc in ch1 sp, skip BPdc, skip ch1 sp, skip BPdc6tog, skip ch1 sp, skip BPdc* x 8, slst in sc, <u>slst in next</u>  <u>4 sc</u> | 24 sc | 24cm |
| 16 | *[dc, ch2, skip 1 sc] x 9, dc2tog using next sc and next marked stitch, ch2* x 8, replace last ch2 with dc in first dc | 9 dc, 10 ch2 sps, 1 dc2tog | 26cm |
| 17 | <i>First PC goes into the sp created by the joining dc.</i> <i>Note that there is no chain space between the 2 PC either side of the dc2tog.</i> *[PC in ch2 sp, ch3] x 9, PC in ch2 sp, skip dc2tog* x 8, slst in PC Fasten off. | 10 PC, 9 ch3 spaces | 29cm |

| | | | |
|-----------|--|---|---|
| <p>18</p> |  <p>Attach yarn to the 5th space of any 'petal'.</p> <p><i>There is no ch3 space between the 2 PC either side of the dc2tog.</i></p> <p><i>Skip all PC.</i></p> <p>I have broken this round down into steps to make it easier to understand.</p> <p>3dc in next 6 ch3 sps (photo 18a),</p> <p>*3hdc in next ch3 sp, 3sc in next 5 ch3 sps, 3hdc in next ch3 sp, 3dc in next 2 ch3 sps* x 5 (photo 18b),</p> <p>3dc in next 3 ch3 sps, (3dc, ch2, 3dc) in next ch3 space (photo 18c),</p> <p>3dc in next 5 ch3 sps, 3hdc in next ch3 sp, 3sc in next 5 ch3 sps (photo 18d),</p> <p>3hdc in next ch3 sp, 3dc in next 5 ch3 sps, 3dc in first ch3 sp, <u>ch1</u>, <u>sc in first dc</u> (counts as ch2 sp) (photo 18e)</p> | <p>Total stitch counts for rounds 18-21.</p> <p>96 dc, 36 hdc, 90 sc, 2 ch2 sps</p> | <p>Measured as shown for rounds 18-21.</p> <p>29cm</p>  |
| <p>19</p> | <p>3dc into space created by joining sc, dc x 18, hdc x 3, *sc x 15, hdc x 3, dc x 6, hdc x 3* x 4, sc x 15, hdc x 3, dc x 18, (3dc, ch2, 3dc) in ch2 space, dc x 15, hdc x 6, sc x 15, hdc x 6, dc x 15, 3dc in first space, ch1, sc in first dc</p> | <p>102 dc, 42 hdc, 90 sc, 2 ch2 sps</p> | <p>30cm</p> |
| <p>20</p> | <p>3dc into space created by joining sc, dc x 21, hdc x 3, sc x 15, hdc x 3, dc x <u>87</u>, hdc x 3, sc x 15, hdc x 3, dc x 21, (3dc, ch2, 3dc) in ch2 space, dc x 18, hdc x 3, sc x 21, hdc x 3, dc x 18, 3dc into first space, <u>ch1</u>, <u>sc in first dc</u></p> | <p>177 dc, 18 hdc, 51 sc, 2 sps</p> | <p>31cm</p> |

| | | | |
|----|--|--------|------|
| 21 | <p>3dc in sp created by joining sc (mark first dc), dc x 177, 5dc in ch2 sp (mark 3rd dc), dc x 69, <u>2</u>dc in first sp, slst in dc</p> <p>Fasten off.</p> | 256 dc | 32cm |
|----|--|--------|------|

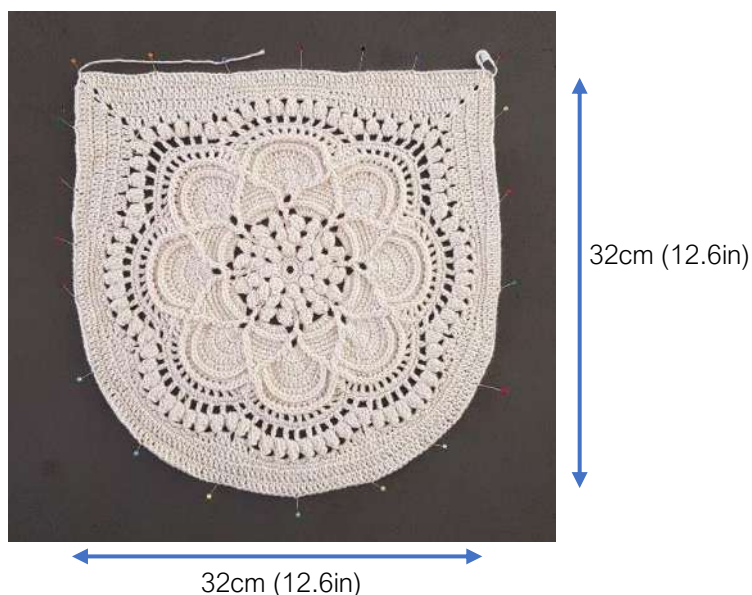
Repeat the pattern for the second panel then block both panels to the same size.

Blocking

Blocking will give a neat, flat, even look to your project while making it easier to keep the correct shape.

You can either dip your project in cold water, or spray it with clean water. Squeeze it gently to remove any excess water, but do not wring or twist it. Pin your project out to the desired shape and size on blocking boards or foam mats. Allow it to dry completely before unpinning.

I blocked my panels to 32cm x 32cm (12.6in x 12.6in). The size you block your panels to doesn't have to be the same as mine, just make sure both panels are blocked to the same size.

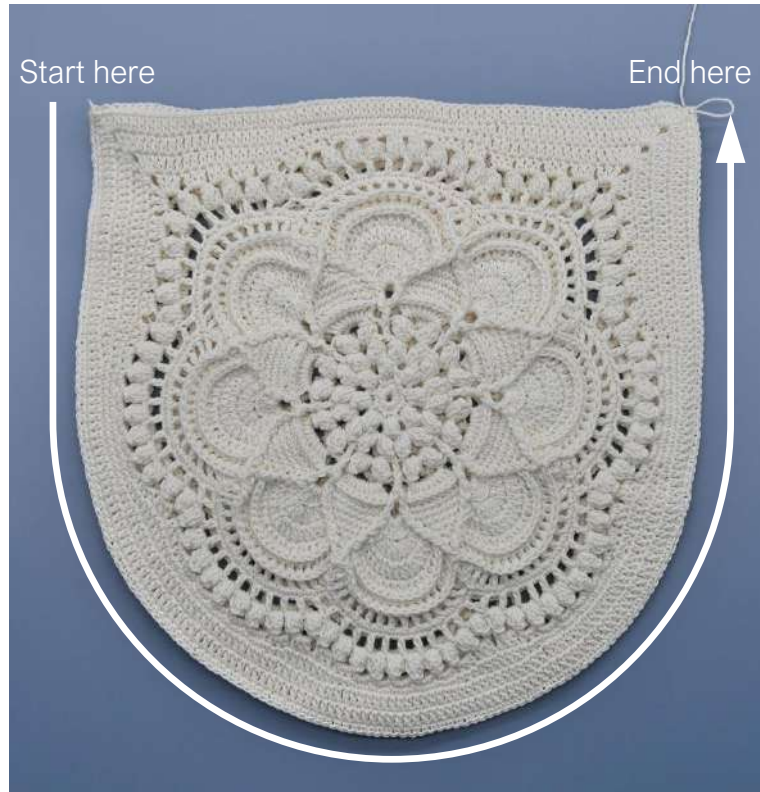


Joining the panels together

With the *wrong* sides of the panels facing each other, and the corners aligned, attach the yarn to the left-hand marked stitches of both panels.

Ch1, sc in corresponding stitches of both panels of the bag all the way around the curved edge, stopping at the right-hand corner marked stitch. 183 sc

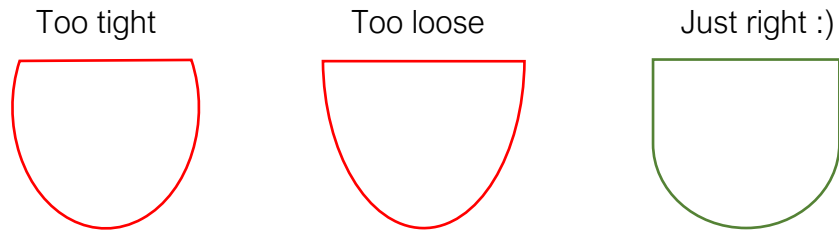
Do not fasten off, continue on to top edge.



Top Edge

Turn the bag to work along the right side of the top edge of the opening.

When crocheting the top edge, use tension to create an opening that is the same width as the bag.



| Round | Instructions | Stitch Count |
|-------|---|----------------|
| 1 | <p><i>Mark the first st of each round.</i></p> <p>Ch1, sc x 73 starting with the next dc, sc in the first sc of the joining row, sc x 37, ch20 (button loop), sc x 36, sc in the last sc of the joining row</p> | 148 sc, 1 ch20 |
| 2 | Sc x 148 (moving the button loop to the outside of the bag) | 148 sc |
| 3 | <p>Sc x 143 (finishing with 5 stitches left)</p> <p>Do not fasten off, continue on to the strap.</p> | 143 sc |

Strap

The strap will stretch once weight is placed in the bag. I have taken this into consideration when calculating the length of the shoulder strap.

| Row | Instructions | Stitch Count |
|--------|--|--------------|
| 1 | <i>Ch2 at the start of the row does not count as a stitch.</i> Ch2, dc in same stitch as last sc, dc x 11, turn | 12 dc |
| 2 - 61 | Ch2, dc in first dc, dc x 11, skip ch2, turn <i>Approximately 60cm (24in) long.</i> | 12 dc |

With no twists in the strap, place the right side of the strap against the right side of the bag. Ch1, slst the strap to the bag with 6 slst either side of the seam. Fasten off and weave in the ends.

Lining

Basic sewing knowledge and skills assumed.

Supplies

| | |
|----------------------------|--|
| crochet bag | pins |
| paper, bigger than the bag | lining fabric (See below for details.) |
| pencil | thread to match the bag |
| ruler | sewing machine |
| scissors | |

Lining fabric

Choose a fabric that you are happy with if the wrong side shows through the crochet. I like to use de-lustered satin for lining my bags. It is a thick, luxurious satin that is easy to sew and gives some structure to the bag. You may also use regular satin, although I don't recommend this for beginner sewers as it is thinner and more difficult to sew. Cotton fabric is also suitable and is great for beginner sewers. Do not use fabric that has stretch such as lycra or t-shirt material.

The amount of lining fabric you need depends on the size of your bag.

Measure the width and height of your bag.

The width of the fabric needs to be twice the width of your bag, plus 10cm (4in).

The length of the fabric needs to be the height of your bag, plus 5cm (2in).

If you are unsure, I recommend you make your pattern before buying your lining fabric.

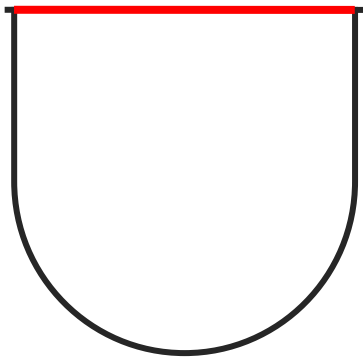


Pattern

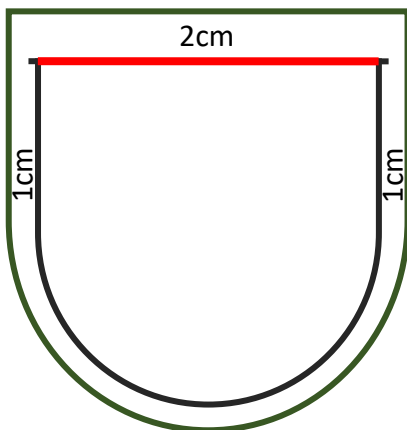


1. Fold the strap to the back of the bag. Place the bag in the centre of the paper and press the bag flat with your hands. (The photo shows a different bag, but the instructions are the same.)

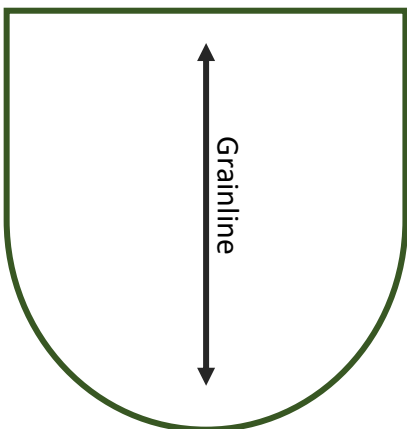
Mark the top edge on both sides where the strap joins the bag. Draw around the curve of the bag. (I used a marker so that it shows better in the photo, but you should use a pencil so that you don't mark your bag.)



2. Remove the bag and draw a straight line joining the marks at the top edge (shown in red).



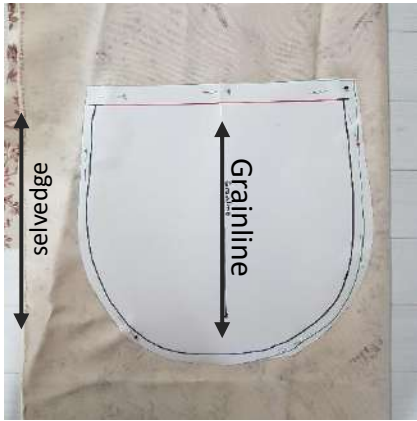
3. Add 2cm (0.8in) above the red line and 1cm (.4in) around the curved edge.



4. In order to create a symmetrical pattern, fold the pattern in half sideways and cut through both layers along the green line that gives the largest pattern.

Draw a grainline along the fold.

Cutting



5. Pin the pattern onto your fabric with the selvedge parallel to the grainline. I have doubled my fabric so I only need to cut once to get 2 pieces. If necessary, pin and cut 2 separate pieces.



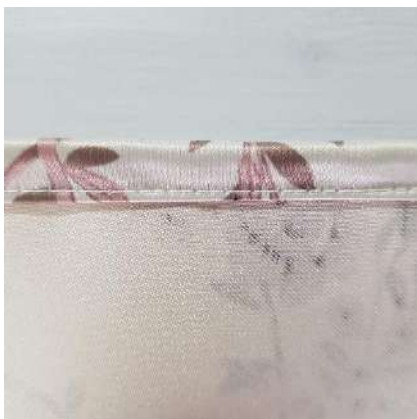
Sewing



6. With right sides of the fabric facing each other, sew around the curved edge with a 1cm (.4in) seam allowance.



7. Top stitch the seam.



8. Fold the top edge over to the wrong side by 1cm (0.4in) then again by another 1cm (0.4in) and pin it. Sew close to the first fold.



9. Fold the button loop down and secure it out of the way.



10. Place the lining inside the bag with the right side facing inwards, and the side seams aligned.

Pin the lining to the bag just below the top edge adjusting the crochet as necessary to get a neat fit with the lining.

Sew close to the fold of the lining, being careful not to sew the button loop or the straps.

Fringe

Cut 135 strands of yarn at 30cm (12in) each. (27 tassels with 5 strands in each = 135 strands).

Attach the first tassel to the 53rd sc of the joining row by following these instructions.



1. Fold 5 strands in half.
2. Place a hook through the indicated stitch from the back to the front.
3. Place the folded end of the strands over the hook and pull them through the stitch.
4. Yarn over with the strands.
5. Pull through the stitch and tighten the strands as necessary.

Repeat for the remaining strands in every 3rd stitch around the bottom curve of the bag. There should be 27 tassels.

Iron the fringe and trim the ends with sharp scissors as needed.



Button

Attach the button to the top centre of the front of the bag.



Well done! You have finished!