

# BEAR WITH ME

## CROCHET PATTERN

*beginner friendly*



# Pattern notes

.skill level: beginner

.terminology: US

.size: 54-58 cm head circumference (most adult head size).

.pattern includes instructions and photographs for the hat body, two-color-bear ears, and exact ears placement; two yarn recommendations; exact color codes for showcase pieces.





### **TOOLS**

- .hook 5.0 mm
- .tape measure
- .yarn needle
- .scissors

### **YARN**

- .size 6 - super bulky polyester yarn - 100gr ca. 120m
- .main color: approx. 100 gr
- .secondary color: <20gr

### **STITCH ABBREVIATIONS**

- ch - chain
- sc - single crochet
- hdc - half double crochet
- inc - increase
- slst - slip stitch
- st(s) - stitch(es)
- sk - skip

### **GAUGE**

10 hdc x 8 rows (4"x4")

## YARN RECOMMENDATIONS

### 1. YARNART DOLCE

- .firmer and steadier hat
- .use of approx. **120gr** main color and **<20gr** secondary color

### 2. HIMALAYA DOLPHIN BABY

- .more color options
- .use of approx. **100gr** main color and **<20gr** secondary color

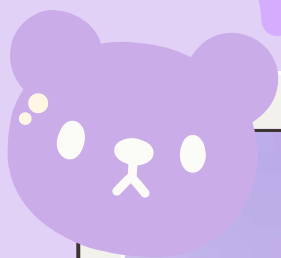
*Note: if you use a different yarn, the outcome might be different.*



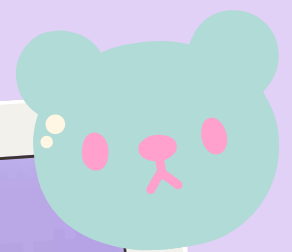
BORED PANDA  
**YARNART DOLCE**  
**MAIN: 765**  
**SECONDARY: 747**



BORED PANDA  
**HIMALAYA DOLPHIN BABY**  
**MAIN: 80332**  
**SECONDARY: 80313**



BORED PANDA  
**YARNART DOLCE**  
**MAIN: 744**  
**SECONDARY: 741**



BORED PANDA  
**HIMALAYA DOLPHIN BABY**  
**MAIN: 80347**  
**SECONDARY: 80303**

## HAT BASE (1)

Quick guide: the top hat starts with 10 hdc and 5 increasing rows. 6 rows of hdc around for the main body. The brim contains 4 increasing rows and one row hdc around.

### Notes:

.after each row, **slst** into the first st **to join**. then **ch 2** and **crochet the first hdc** of next row **in the same st**.

.**ch 2** in the beginning of each row **doesn't count as a st**.

Start with the main color. Here I use brown.

R1. ch 3, crochet 10 hdc in the first chain, join. (10sts) (you can also make a magic ring of ch2 and 10 hdc).

R2. Ch 2, hdc-inc in each st around, join. (20 sts)

R3. Ch 2, \*hdc, hdc-inc\* repeat till the end, join. (30sts)

R4. Ch 2, \*2hdc, hdc-inc\* repeat \*\* till the end, join. (40sts)

R5. Ch 2, \*3hdc, hdc-inc\* repeat \*\* till the end, join. (50sts)

R6. Ch 2, \*4hdc, hdc-inc\* repeat \*\* till the end, join. (60sts).

Now we finish the top part. It should have a width of approx. 16,5 cm.



## HAT BASE (2)

R7-R12 (6rows in total). Ch 2, hdc around, join. (60sts)  
Now we finished the body part. Move on with the brim.

R13. Ch 2, \*5hdc, hdc-inc\* repeat \*\* till the end, join. (70sts)

R14. Ch 2, \*6hdc, hdc-inc\* repeat \*\* till the end, join. (80sts)

R15. Ch 2, \*7hdc, hdc-inc\* repeat \*\* till the end, join. (90 sts)

R16. Ch 2, \*8hdc, hdc-inc\* repeat \*\* till the end, join. (100sts)

R17. Ch 2, hdc around, join. (100sts)

Fasten off and weave in the end. The hat base should have a total length of approx. 20cm



Flatten the hat, make sure the seam where we slst at the end of each row stays in the back.



## INNER EARS

Start with secondary color for the inner ears.

R1. Make a magic ring of 4 sc. (do not join) (4sts)

R2. Ch 1, turn, 2sc in each st. (8sts)

R3. Ch 1, turn, sk the first st, \*sc in next st, inc\* repeat \*\* two more times, sc in the last st. (10sts)

R4. Ch 1, turn, sk the first st, \*sc in the next 2sts, inc\* repeat \*\* two more times, sc in the last st.

(13sts)

Fasten and leave a tail for sewing. Make two pieces.



## OUTER EARS

Use the main color for the outer ears.

Repeat the steps like inner ears but do not fasten off.

Put the outer part on the inner part and we are going to crochet them together along the edge in the next row.

R5. Ch 1, sc in each st till the end (crochet both parts together) (13sts).

R6-R7. Ch 1, turn, sc in each st till the end. (13sts).

Fasten off and leave a tail for sewing. Repeat for the other side.



## EARS PLACEMENT



Hide the excess yarn inside the gap before sewing the ears into the hat base.

We are going to attach the ears between Row 4 and Row 8. Sew in the inner ear first.



Then sew the edges of the outer ear part slightly in curve right in front of the inner ear to create a 3d effect (P1). For the finish, the ear after sewing should still stay between Row 4 and Row 8 (P2). Repeat for the other side.



## FINISHING...

Weave in all ends and cut the excess yarn.  
Well done!! You did a good job! ^^



I AM HAPPY TO SEE YOUR RESULTS!  
TAG ME ON SOCIALS WHEN YOU POST  
WITH YOUR BEAR BUCKET HATS

