

## Mosaic Crochet Rug Chart and Accompanying Notes

### Materials

600g ribbon yarn (colour A)  
400g ribbon yarn (colour B)  
7mm crochet hook  
6mm crochet hook  
Tapestry needle

### Gauge

12 st's x 12 rows = 10cm

### Abbreviations

#### US CROCHET TERMS

**sc:** single crochet

**st:** stitch

**sl st:** slip stitch

**dc:** double crochet

**blsc:** sc into the black loop only from previous round

**fldc:** dc into front loop only from previous round of the same colour

**blo:** back loop only

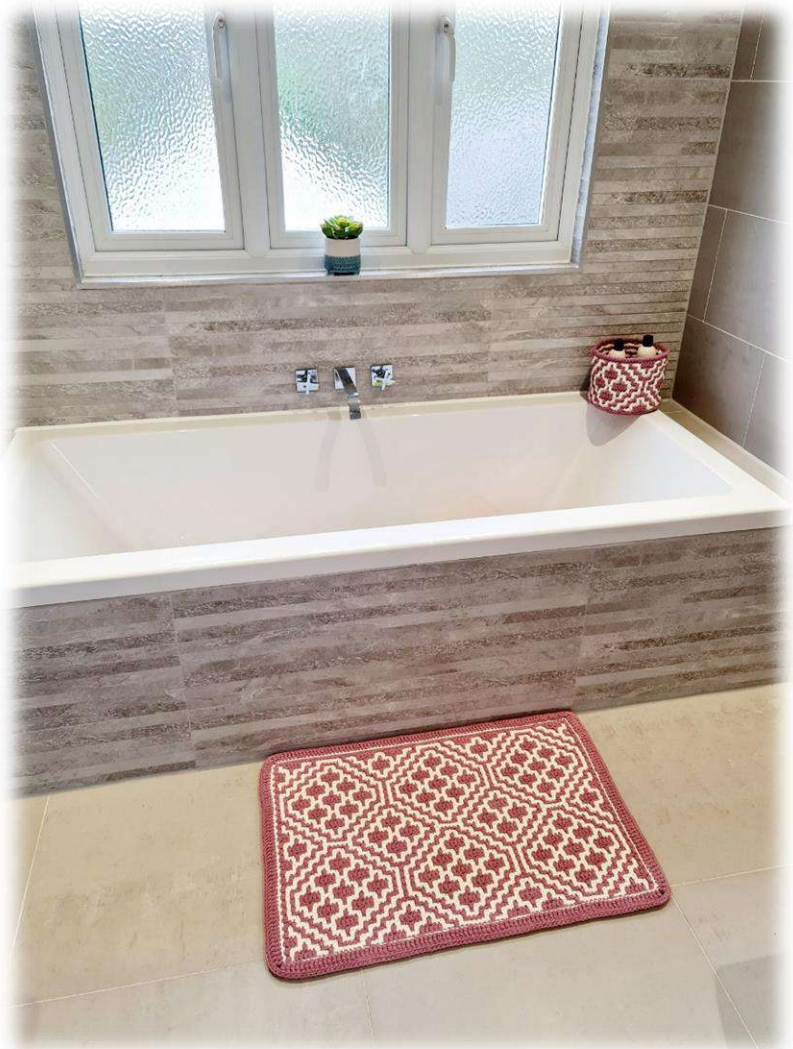
**tr:** treble crochet

### Stitch Instructions

**No symbol on the chart = blsc:** by doing a sc into the back loop only, it allows the front loop to be used for a fldc on subsequent rows, as explained below.

**X symbol on the chart = fldc:** by doing a dc into the front loop only of the corresponding stitch on the previous row of the same colour (ie not the last row just worked, the one before), it covers up the last row in the contrasting colour. This technique is what creates the mosaic pattern.

**Invisible join:** Cut the yarn leaving a 10cm tail, but keep your hook in the working loop. Use the hook to pull the loop until the tail comes all the way through. Insert your hook from back to front (not front to back like usual) through both loops of the first st made in the round, pick up your yarn with hook and pull through the stitch, then insert hook from bottom to top through back loop of the last st in the round and pick up yarn and pull through. This creates a 'v' on top of the st which looks like all standard stitches, hence the name, invisible join. YouTube has plenty of video tutorials on this method if required.



These accompanying notes are to be used alongside the chart on the following page. There are also separate detailed written instructions which may be helpful to be used alongside the chart.

The mosaic pattern can be seen in the chart thanks to the colours and is a good visual of what you are making, however, the colours are irrelevant when it comes to actually crocheting the stitches. This is because mosaic crochet is worked with alternating rows of 2 contrasting colours. ie 1 row in yarn A, 1 row in yarn B, then A, then B.....etc.

It is worked in one direction only (from right to left as usual) with the right side of your work facing you and the yarn is cut at the end of each row and joined at the start of every row.

At the start of each row the new colour is joined by inserting hook into first stitch and pulling up a loop, then do 1 ch followed by 1 standard sc (through both loops) in the same 1<sup>st</sup> st. This makes the border stitch. As you work you can tie double knots around the beginning yarn tails from two rows together to secure.

At the end of each row the border stitch is made by a standard sc (through both loops) of the last st, cut the yarn leaving a tail of approx. 3-4cm and pull the tail through to secure (be careful to not count this pulled through tail as a st...it should never be worked into).

A double border is created at the end to make a neat and professional finish and to also hide all the ends to eliminate the need of sewing them all in.

In column 1 of the chart you will see each row is either A or B, this refers to yarn colour A and yarn colour B. All odd number rows are yarn A and even number rows are yarn B. This starting colour and letter reminds you what colour you should be using for that row and this column represents the beginning border stitch which is a ch 1 and sc in same space as explained above. After this point, the colours can be ignored and the placement of the symbols are the important part.

Column 87 (last column) represents the ending border stitch which is a standard sc through both loops as previously explained followed by cutting the yarn and pulling through.

**No symbol = blsc**

**X symbol = fldc**

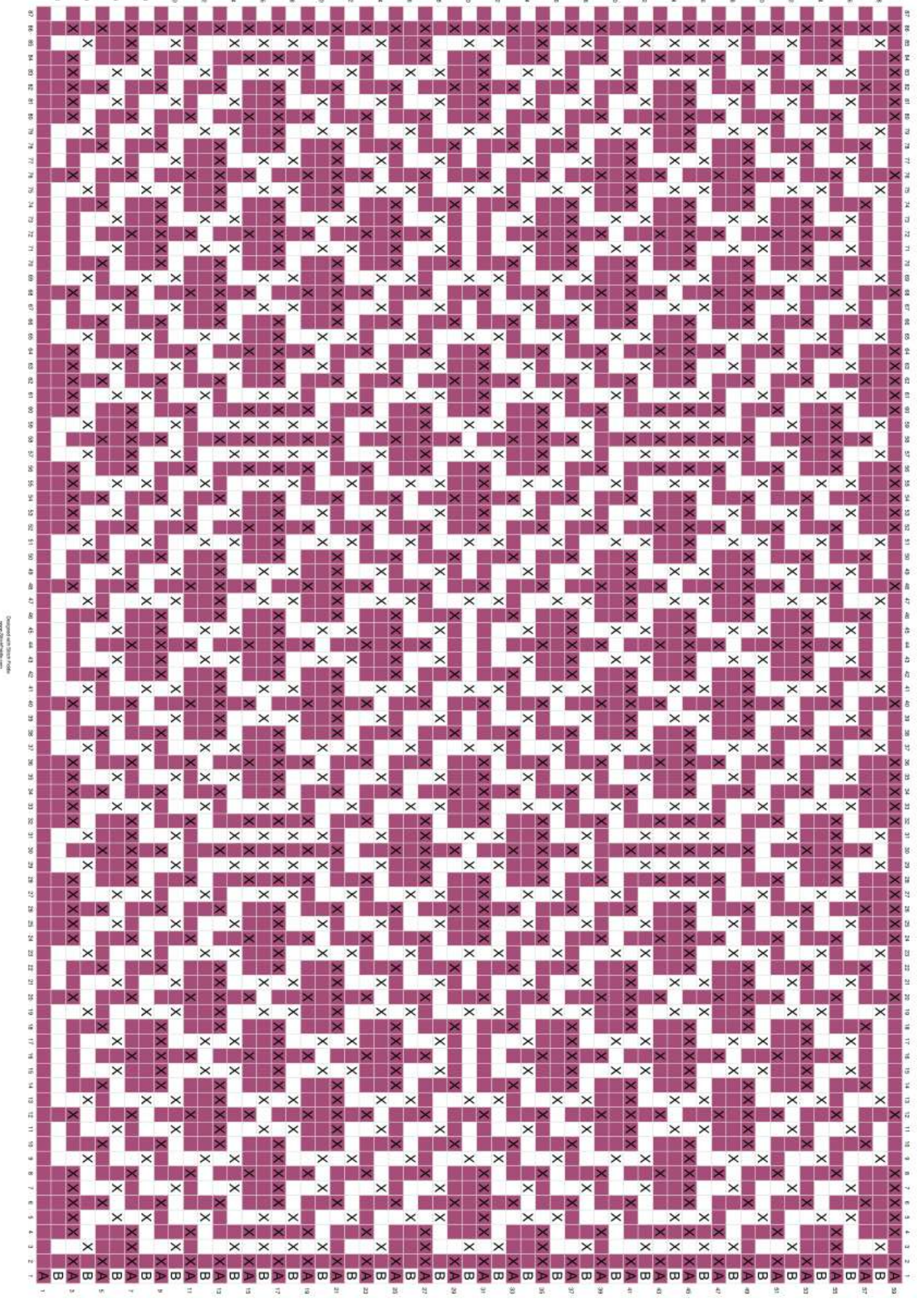
### **Approximate Finished Sizes (incl border):**

Bath Rug (75cm x 52cm): 87 st's x 59 rows

Small Area Rug (97cm x 75cm): 115 st's x 87 rows

Medium Area Rug (119cm x 97cm): 143 st's x 115 rows





**Foundation Row:** in yarn A, ch 88 (multiple of 28 + 4 for larger widths)

**Row 1:** continuing with yarn A, sc in 2<sup>nd</sup> ch from hook and every st across. (87) **TIP: if you sc into the back bump of the ch st's it will provide a neater finish.**

**Row 2:** join yarn B, ch 1, sc in same st (border), blsc in each st to last st (rug), sc in last st, cut yarn and pull through (border). (87)

**Row 3 onwards:** follow the chart. Or if preferred, the written instructions in separate pdf.

**If a larger size is required:**

**Row 59 – 86:** Rep rows 3-30 (last row 87: rep row 3)

**Row 87-114:** Rep rows 3-30 (last row 115: rep row 3)

You can keep increasing the length with these repeats until your desired size. Always end with row 3.

## Double Border

The double border requires a bit of effort but it is totally worth it and will give a beautiful, professional finish to your rug as well as concealing all of those ends so they don't need to be sewn in. It can be a little tricky navigating through all of those loose ends but bear with it!

Ensure all starting loose ends are knotted together and trim back where necessary.

Firstly, a sl st is made all around the rug and then a tr (treble crochet) using a smaller hook size is made on the back and front of that sl st. This creates a double thickness and then those are held together (and conceal the ends) by sl st'ing together all around. **TIP: Using the invisible join method during this double border will make a really neat finish (see stitch instructions). TIP: going down a hook size on borders generally makes borders lie better and avoids rippling.**

**Row 1:** With the right side of the rug facing you, anywhere along either one of the short sides, inbetween the border st and the 1<sup>st</sup> stitch of the rug pattern, join yarn B by inserting hook and pulling up a loop, proceed to sl st in every st along that side (in between the border st and the first stitch of the rug pattern), then through both loops of the stitches along the long edge, the other short side, the other long edge and back to where you started on the first short side. Extra st's are not required in the corners at this stage. Join to first sl st, preferably using the invisible join method.

**Change to 6mm crochet hook.**

**Row 2:** Turn your work over so the back of the work is facing you and you now need to do a tr into every sl st loop just created. Join yarn A at any point around your rug and ch 3 (this counts as the 1<sup>st</sup> tr), proceed to tr in every loop around. When you get to the last st on each edge, ch 2 to get around the corner and continue to tr into the first sl st loop along the next edge. This row can be a little tricky as it is often difficult to get your hook into that loop on the back of your work but keep going, this is the hardest part! Work all around and join to top of first tr made (not the ch 3) using invisible join method.

**Row 3:** Turn your work over so the front of your work is facing you and you now need to do a tr into every sl st on this side. Here you will see a front and a back loop of the sl st from row 1. I always

prefer to tr into the front loop only of this sl st which then makes a gorgeous contrast frame around your work. So, you can choose whether to tr just through this back loop (with contrasting frame) or through both loops (without contrasting frame). Start anywhere along one side, continuing with yarn A, join yarn, ch 3, tr in every st around, making 2 ch's in each corner and join to top of 1<sup>st</sup> tr (not starting ch 3) using invisible join method.

**Row 4:** Continuing with yarn A, join your yarn anywhere along an edge and sl st the front and back tr's together. Ensure your ends are concealed nicely within the front and back tr's as you go. Join to 1<sup>st</sup> st preferably using the invisible join method.

Sew in any loose ends and steam block if necessary to square up and/or flatten.

