

## Mosaic Crochet Basket Written and Chart Pattern

### Materials

150g ribbon yarn (colour A)  
100g ribbon yarn (colour B)  
7mm crochet hook  
Tapestry needle

### Gauge

12 st's x 12 rows = 10cm

### Abbreviations

#### US CROCHET TERMS

**sc:** single crochet  
**sc inc:** single crochet increase (2 sc in same st)  
**st:** stitch  
**sl st:** slip stitch  
**dc:** double crochet  
**fldc:** dc into front loop only from previous round of the same colour  
**flsc:** sc into the front loop only from previous round  
**blsc:** sc into the back loop only from previous round  
**flo:** front loop only  
**blo:** back loop only  
**rsc:** reverse single crochet



### Stitch Instructions

**blsc:** by doing a sc into the back loop only, it allows the front loop to be used to for fldc as explained below.

**fldc:** by doing a dc into the front loop only of the corresponding stitch on the previous round of the same colour, it covers up the last round in the contrasting colour. This technique is what creates the mosaic pattern.

### Notes

This mosaic pattern is formed by crocheting alternating rows of 2 contrasting colours while working in the round. 1 row of yarn A, then yarn B, then A, then B.....etc.

When working the sides of the basket, you ch 1 at the beginning of the round. At the end of the round, change yarn to the next colour and sl st with the new colour into the back loop of the starting chain in that round. Ensure both colour yarns are pulled very tight at this point to obtain a neat join.

The basket is finished with a round of rsc which adds structure to the rim of the basket

## Written Pattern:

### Basket Base

In yarn A, create a magic ring

**Round 1:** 6 sc into magic ring, sl st to first sc. (6)

**Round 2:** ch 1, sc inc in every stitch, sl st to first sc. (12)

**Round 3:** ch 1, \*sc inc, sc\* x 6, sl st to first sc. (18)

**Round 4:** ch 1, sc, \*sc inc, 2 sc\* x 5, sc inc, sc, sl st to first sc. (24)

**Round 5:** ch 1, \*sc inc, 3 sc\* x 6, sl st to first sc. (30)

**Round 6:** ch 1, 3 sc, \*sc inc, 4 sc\* x 5, sc inc, 1 sc, sl st to first sc. (36)

**Round 7:** ch 1, \*sc inc, 5 sc\* x 6, sl st to first sc. (42)

**Round 8:** ch 1, 4 sc, \*sc inc, 6 sc\* x 5, sc inc, 2 sc, sl st to first sc. (48)

**Round 9:** ch 1, \*sc inc, 7 sc\* x 6, sl st to first sc. (54)

**Round 10:** ch 1, 5 sc, \*sc inc, 8 sc\* x 5, sc inc, 3 sc, sl st to first sc. (60)

**Round 11:** ch 1, \*sc inc, 9 sc\* x 6, sl st to first sc. (66)

**Round 12:** ch 1, 3 sc, \*sc inc, 10 sc\* x 5, sc inc, 7 sc, sl st to first sc. (72)

**Round 13:** ch 1, flsc to end, change to yarn B, sl st into flo of starting ch 1. (72)

### Basket Sides

**Round 14:** ch 1, blsc to end, change to yarn A, sl st into blo of starting ch 1. (72)

**Round 15:** ch 1, 2 fldc, \*3 blsc, 1 fldc; rep from \* 3 more times, \*\*3 blsc, 5 fldc; rep from \* 4 more times, rep from \*\* once, rep from \* 4 more times, 3 blsc, 3 fldc, change to yarn B, sl st into blo of starting ch 1. (72)

**Round 16:** ch 1, 2 blsc, 1 fldc, \*3 blsc, 1 fldc; rep from \* once, \*\*1 blsc, 1 fldc; rep from \* twice; \*\*\*5 blsc, 1 fldc; rep from \* twice, rep from \*\* once, rep from \* twice, rep from \*\*\* once, rep from \* twice, repeat from \*\* once, rep from \* twice, 3 blsc, change to yarn A, sl st into blo of starting ch. (72)

**Round 17:** ch 1, \*3 blsc, 1 fldc; rep from \* to end, change to yarn B, sl st into blo of starting ch. (72)



**Round 18:** ch 1, 1 fldc, \*3 blsc, 1 fldc; rep from \* once, \*\*5blsc, 1 fldc; rep from \* twice, \*\*\*1 blsc, 1 fldc; rep from \* twice, rep from \*\* once, rep from \* twice, rep from \*\*\* once, rep from \* twice, rep from \*\* once, repeat from \* twice, 1 blsc, change to yarn A, sl st into blo of starting ch. (72)

**Round 19:** ch 1, 1 blsc, 1 fldc, \*3 blsc, 1 fldc; \*\*3 blsc, 5 fldc; rep from \* 4 times, rep from \*\* once, rep from \* 4 times, rep from \*\*once, rep from \* twice, 2 blsc, change to yarn B, sl st into blo of starting ch. (72)

**Round 20:** ch 1, 2 blsc, 1 fldc, \*3 blsc, 1 fldc; \*\*1 blsc, 1 fldc; \*\*\*5 blsc, 1 fldc; rep from \*\* once, from from \* once, rep from \*\*\* once, rep from \* once, rep from \*\* once, rep from \*\*\* once, rep from \*\* once, rep from \* once, rep from \*\*\* once, rep from \* once, rep from \*\* once, rep from \*\*\* once, rep from \*\* once, rep from \* once, 3 blsc, change to yarn A, sl st into blo of starting ch. (72)

**Round 21:** ch 1, \*3 blsc, 1 fldc; rep from \* to end, change to yarn B, sl st into blo of starting ch (72)

**Round 22:** ch 1, 1 fldc, \*3 blsc, 1 fldc; \*\*5 blsc, 1 fldc, 1blsc, 1 fldc, 5 blsc, 1 fldc; rep fom \* once, \*\*\*1 blsc, 1 fldc; rep from \* once, rep from \*\* once, rep from \* once, rep from \*\*\*once, rep from \* once, rep from \*\* once, rep from \* once, 1 blsc, change to yarn A, sl st into blo of starting ch. (72)

**Round 23:** ch 1, \*1 blsc, 1 fldc, 3 blsc, 5 fldc, 3 blsc, 5 fldc, 3 blsc, 1 fldc, 1 blsc, 1 fldc; rep from \* twice, change to yarn B, sl st into blo of starting ch. (72)

**Round 24:** Repeat round 22

**Round 25:** Repeat round 21

**Round 26:** Repeat round 20

**Round 27:** Repeat round 19

**Round 28:** Repeat round 18

**Round 29:** Repeat round 17

**Round 30:** Repeat round 16

**Round 31:** Repeat round 15

**Round 32:** ch 1, rsc all round, sl st to 1<sup>st</sup> st to join.

Fasten off and weave in loose ends.



## Chart Pattern

Please see pattern in chart format on the next page. These are accompanying notes for the chart.

In column 1 of the chart you will see each row is either A or B, this refers to yarn colour A and yarn colour B. All odd number rows are yarn A and even number rows are yarn B. This starting colour and letter informs you what colour you should be using for that row and doesn't represent a physical stitch. After this point, the colours can be ignored and the placement of the symbols in the chart are the important part.

In column 2 of the chart you will see the symbols C, this means ch 1.

In column 75 of the chart you will see the symbols S, this means sl st to the back loop of the starting ch 1 in that round.

### Symbols:

blank = blsc

X = fldc

C = ch 1

S = sl st to back loop of starting ch

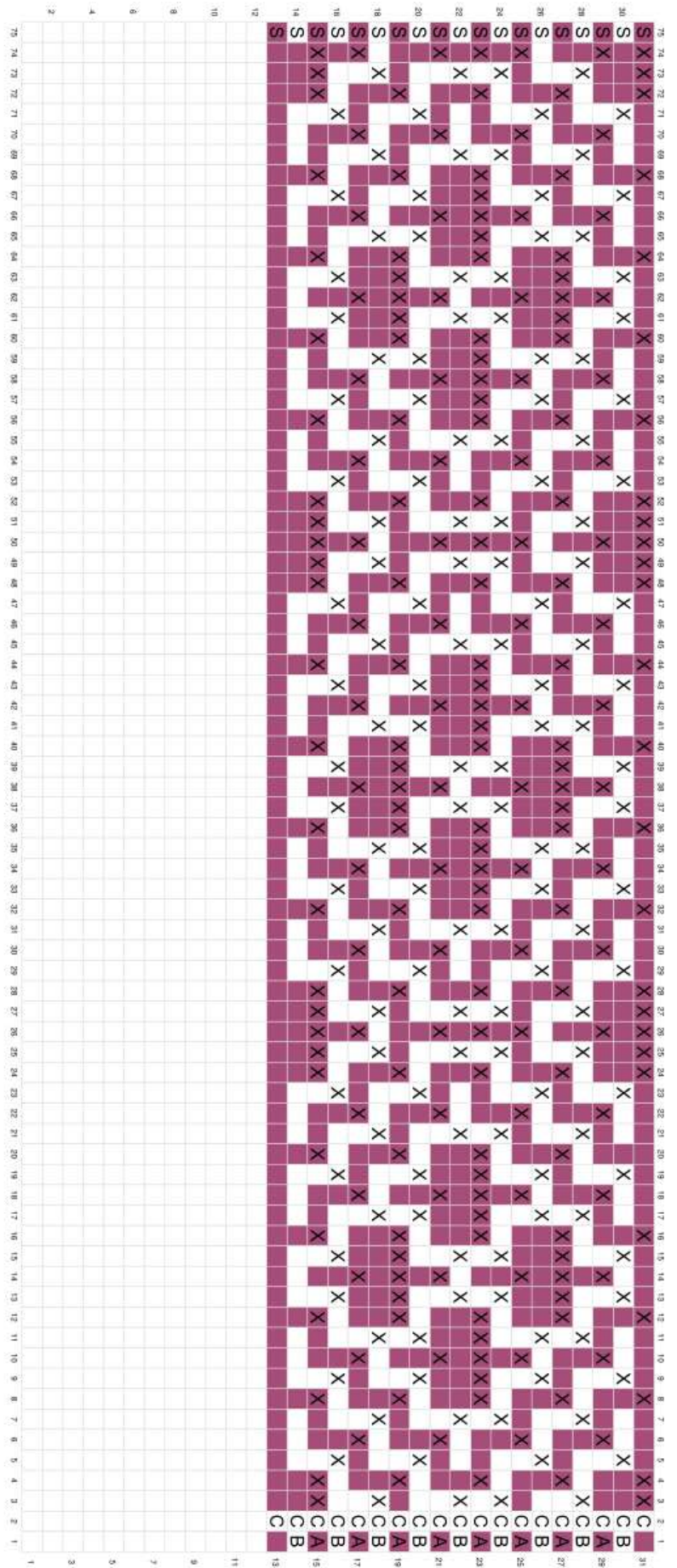
**Rounds 1-13:** basket base, please follow instructions above.

**Round 14:** ch 1, blsc to end, change to yarn A, sl st into blo of starting ch 1. (72)

**Round 15-31:** follow chart below.

**Round 32:** ch 1, rsc all round, sl st to 1<sup>st</sup> st to join.





Copyright © 2011  
www.stm.com

