

Corfu Bag

crochet pattern by Natalia Kononova



Skill Level

- Intermediate/ Advanced

Copyright information

- © This pattern and all images are copyrighted by and intellectual property of Natalia Kononova.
- Do not copy, share, resell, or forward this pattern to anyone. No part of this work may be reproduced, transmitted, translated or published in any form or by any means without prior written permission.
- If you bought this pattern from any other person but the designer Natalia Kononova, or downloaded it for free, please, delete file immediately. Thank you!

Size

- Approximate bag measurements:
 - Length: 41.5cm (16 ³/₈") from the bottom center to the upper edge
 - Width: 38.8cm (15 ¹/₄")
 - Loaded bag height: 32cm (12 ⁵/₈")
 - Handles length: 64cm (25 ¹/₄")

Materials and Tools

- DK weight yarn with a ratio of 120-130 meters (131-142 yards) per 50 grams, such as: **Scheepjes Catona** (100% Mercerized Cotton, Fingering weight, 50g/ 125m/ 136.7yds) Get from [Wool Warehouse](#)* (UK), [LoveCrafts](#)* (UK and US), [Jimmy Beans](#)* (US), [Caro's Atelier](#)* (NL)

Yarn1 (background): 4 skeins / 170g / 465yds in Silver Blue

Yarn2 (embossed elements): 7 skeins / 305g / 834yds in Moon Rock

*Affiliated link (I receive a small commission from yarn seller at no additional cost for you)

- Crochet hook: 2.75mm
- Tapestry needle
- Hand-sewing needle
- Sewing thread matching the background color
- Interfacing for upper edge: piece of buckram or other stiff interfacing measuring approximately 7cm x 80cm / 2 ³/₄" x 31 ¹/₂"
- Optional:**
 - Lining: piece of fabric measuring approximately 40cm / 15 ³/₄" x 80cm / 31 ¹/₂" (please measure finished bag before buying and cutting fabric)
 - Drawstring for lining: cord measuring approximately 50cm / 19 ³/₄" (can be crocheted with chain stitches)

Abbreviations (American crochet terminology)

"	inches	dc2tog	2 dc together	pr	previous row
*	rep instructions for single * as directed	dec	decrease	prev	previous
...	rep instructions bet **'s as many times as	dtr	double treble	rem	remain(ing)
		est	extended st	rep	repeat
		edc	extended dc	RH	right hand

[], { }	noted after rep instructions bet []'s or { }'s as many times as noted after	flo	through front loop only	rnd(s)	round(s)
approx	approximately	FLst	st made in front loop	RS	right side
beg	begin/beginning	fnf	foundation	sc	single crochet
bet	between	FPst	st made in front post	sc2inc	2 sc in same st
blo	through back loop only	g	gram(s)	sc2tog	2 sc together
BLst	st made in back loop	hdc	half double crochet	sk	skip
BPst	st made in back post	inc	increase	ss	slip stitch
ch	chain	leg	part of decreasing st	sp(s)	space(s)
ch-# sp	# chain space	LH	left hand	st(s)	stitch(es)
cm	centimeter(s)	lp(s)	loop(s)	tog	together
con	connecting	m	marker	tr	treble crochet
cont	continue	m1-st	stitch with marker 1	tr2inc	2 tr in same st
dc	double crochet	mm	millimeter(s)	tr2tog	2 tr together
dc2inc	2 dc in same st	oz	ounce	ttr	triple treble
		p	picot	WS	wrong side
		PU	pick up	yd(s)	yard(s)
		pm	place marker	yo	yarn over
				(= hdc)	counts as hdc

Videos

All videos are included in this section and written instructions where apply.

Videos only **show highlights** to help you with written instructions and charts.

If a video doesn't play, try to either save it to your playlist on YouTube, add pattern to pdf reading app on your device, open file in .html format (right click – open with – internet browser), or type link into a browser. Contact for assistance: <https://www.outstandingcrochet.com/contact>

Please, **don't share or forward** to anyone. Thank you for respecting copyright laws.

- **Part 1. Bottom:** <https://youtu.be/WbD92zRG7qQ>
Beginning of each round. F2i (increase) placement.
- **Part 2. Round 27:** <https://youtu.be/hxBbLS3QhLs>
Shallow B. Enclosing Yarn1 in front post stitches (see the next video with a better method discovered after the publishing).
- **Better method for enclosing yarn in FP sts:** <https://youtu.be/x-DYn9stR14>
- **Part 3. Round 28:** <https://youtu.be/Y0mGb04IZSk>
Enclosing Yarn2 in back post stitches, special technique for B2i, F2t with one leg in 2 posts.
- **Part 4. Round 30:** <https://youtu.be/-DhFtzGJn3k>
- **Part 5. Round 32:** <https://youtu.be/q7YLaAHB03k> F3i.
- **Part 6. Rounds 33, 34:** <https://youtu.be/VJiUCcrjTJ8>
Hdc between 2 F, B2t with one leg in 2 posts, B in hdc.
- **Part 7. Rounds 35, 37:** <https://youtu.be/7JA8oI7INzU>
Enclosing Yarn1 in middle F of leaf, special stitch: F at the top of embossed element, shifting beginning of round.
- **Part 8. Rounds 38, 39:** <https://youtu.be/ivDW6bsuTHU>
Special stitch: F3t at the top of leaf. Shallow B in F3t.

- **Preventing working ends from twisting:** https://youtu.be/IFKSS6Aus_I

General rules for embossed crochet

- Use Yarn1 (background color) for all back post stitches, hdc, last ss (slip stitch) in each round, and fish stripes.
- Use Yarn2 (color for embossed elements) for all front post sts, except for fish stripes.
- When switching colors, use next color to finish previous stitch. Make last yarn over with the new color.
- Do not switch to Yarn2 for front post stitches if a back post stitch will be made in the same stitch in the next round. These stitches are marked with a red circle on the charts.

Before starting

- **Check pattern page for corrections and updates before starting:**
<https://www.outstandingcrochet.com/corfu-bag-crochet-pattern>
- **For pattern support** join [Outstanding Crochet and Friends Facebook group](#)
- **To receive exclusive discounts**, sign up for newsletters:
www.OutstandingCrochet.com

Special stitches and abbreviations

- **F:** front post double crochet
- **B:** back post double crochet
- **F2i (F3i):** increase, 2 (3) F in same st
- **F2t (F3t):** decrease, 2 (3) F together
- **B2i (B3i):** increase, 2 (3) B in same st
- **B2t (B3t):** decrease, 2 (3) B together.
- **Shallow B:** instead of back post, insert hook from WS to RS under 2 lps of directed st, then from RS to WS under 2 lps of next st. See video for Parts 2 or 8.
- **Legs:** parts of complex stitches. Example: dc2tog (2 double crochet together) has 2 dc legs
- Video for embossed crochet stitches:
<https://youtu.be/0Pz8FJQPKvs>
- **Highlighted sts** are made with Yarn2 (all front post sts except fish stripes)

Gauge

- Front post or back post double crochet stitch: 23 sts x 15 rows = 10cm x 10 cm (4" x 4").

Gauge checking swatch

Video: <https://youtu.be/uXGD7cx6exc>

Row 1: ch27, ch3 (counts as dc), dc (in 5th ch from hook), 25dc, turn.

Row 2: ch2 (counts as 1st B), 26B, turn.

Row 3: ch2 (counts as 1st F), 26F, turn.

Rows 3-16: rep Rows 2, 3.

Bag bottom

Optional oblong bottom: You have the option to create an oblong bag bottom. Refer to the complete instructions on page 21 and continue from Round 27 for the bag.

Chart 1 on p. 5.

Note: In this section, the bag bottom is made entirely with front post stitches, so they are not highlighted.

<https://youtu.be/WbD92zRG7qQ>

Inc Rnd 1 (RS throughout): with Yarn2 ch4, ss in 1st ch, ch2 (counts as dc), 8dc (make them as short as possible) in ch4-ring, ss in 2nd ch of beg ch-2. (9dc)

Inc Rnd 2: ch2 (doesn't count as st throughout bag bottom), F2i (in beg ch-2 from pr), 8 F2i, sk ch-2 (throughout bag bottom), ss (in 1st F throughout bottom). (18F)

Inc Rnd 3: ch2, F2i (in 1st F from pr (ignore ch-2) throughout bottom), F, [F2i, F]x8, ss. (27sts)

Inc Rnd 4: ch2, [2F, F2i]x9, ss. (36sts)

Inc Rnd 5: ch2, [F2i, 3F]x9, ss. (45sts)

Inc Rnd 6: ch2, 2F, [F2i, 4F]x8, F2i, 2F, ss. (54 sts)

Inc Rnd 7: ch2, 4F, [F2i, 5F]x8, F2i, F, ss. (63sts)

Inc Rnd 8: ch2, [6F, F2i]x9, ss. (72sts)

Inc Rnd 9: ch2, [F2i, 7F]x9, ss. (81sts)

Inc Rnd 10: ch2, 2F, [F2i, 8F]x8, F2i, 6F, ss. (90sts)

Inc Rnd 11: ch2, 4F, [F2i, 14F]x5, F2i, 10F, ss. (96sts)

Inc Rnd 12: ch2, 6F, [F2i, 15F]x5, F2i, 9F, ss. (102sts)

Inc Rnd 13: ch2, 8F, [F2i, 16F]x5, F2i, 8F, ss. (108sts)

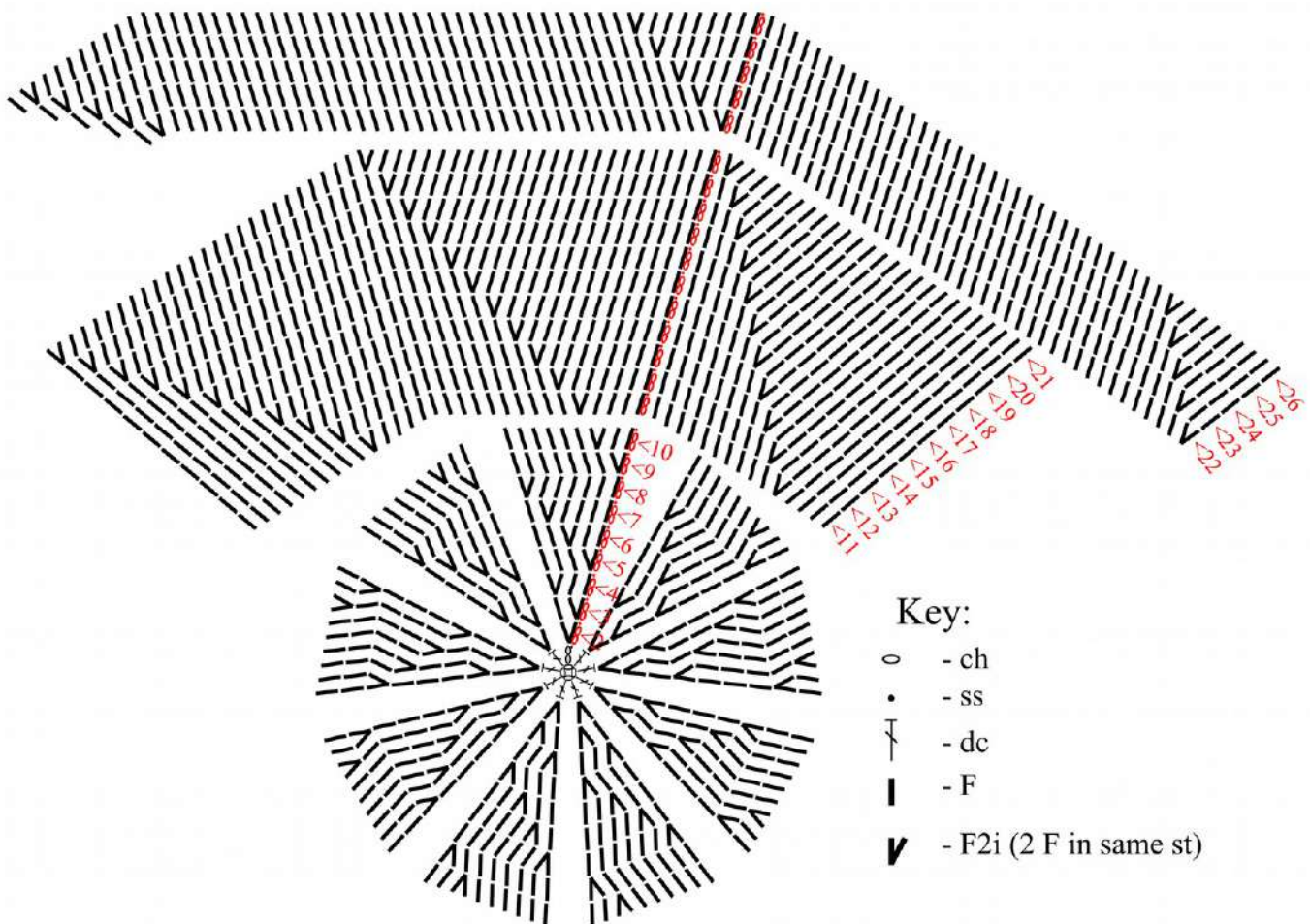


Chart 1. Bag bottom.

Inc Rnd 14: ch2, 10F, [F2i, 17F]x5, F2i, 7F, ss. (114sts)

Inc Rnd 15: ch2, 12F, [F2i, 18F]x5, F2i, 6F, ss. (120sts)

Inc Rnd 16: ch2, 14F, [F2i, 19F]x5, F2i, 5F, ss. (126sts)

Inc Rnd 17: ch2, 16F, [F2i, 20F]x5, F2i, 4F, ss. (132sts)

Inc Rnd 18: ch2, 18F, [F2i, 21F]x5, F2i, 3F, ss. (138sts)

Inc Rnd 19: ch2, 20F, [F2i, 22F]x5, F2i, 2F, ss. (144sts)

Inc Rnd 20: ch2, 22F, [F2i, 23F]x5, F2i, F, ss. (150sts)

Inc Rnd 21: ch2, [24F, F2i]x6, ss. (156sts)

Inc Rnd 22: ch2, [F2i, 38F]x4, ss. (160sts)

Inc Rnd 23: ch2, 2F, [F2i, 39F]x3, F2i, 37F, ss. (164sts)

Inc Rnd 24: ch2, 4F, [F2i, 40F]x3, F2i, 36F, ss. (168sts)

Inc Rnd 25: ch2, 6F, [F2i, 41F]x3, F2i, 35F, ss. (172sts)

Inc Rnd 26: ch2, 8F, [F2i, 42F]x3, F2i, 34F, with Yarn1 ss. (176sts)

Mark stitches for making B3i: pm in 1st F of Rnd 26, [sk 21F, pm in next F]x7 (21F rem to 1st F). (176sts)

Bag sides

Chart 2 on next page.

Video for embossed crochet stitches:

<https://youtu.be/0Pz8FJQPKvs>

Written instructions do not remind you to switch yarn. Make highlighted stitches with Yarn2, all other stitches with Yarn1. See Special stitches and abbreviations on p. 4 and General rules for embossed crochet on p. 4.

Video Part 2. Rnd 27:

<https://youtu.be/hxBbLS3QhLs>

Rnd 27 (RS): with Yarn1 ch2 (counts as 1st B of B3i), shallow B2i in 1st F from pr (counts as 2nd and 3rd B of B3i), [*F2t, 17F, F2t*, shallow B3i]x7, rep bet *'s, ss in 2nd ch of beg ch-2.

Video Part 3, Rnd 28:

<https://youtu.be/Y0mGb04IZSk>

Rnd 28: ch2 (counts as 1st B of B2i), B in same st (in ch-2 from pr; counts as 2nd B of B2i), [*B, B2i, F2t, 15F, F2t*, B2i]x7, rep bet *'s, ss in 2nd ch of beg ch-2.

Rnd 29: ch2 (counts as 1st B of B2i), B in ch-2 from pr (counts as 2nd B of B2i), [*3B, B2i, F2t, 13F, F2t*, B2i]x7, rep bet *'s, ss in 2nd ch of beg ch-2.

Video Part 4. Rnd 30: <https://youtu.be/-DhFtzGJn3k>

Rnd 30: ch2 (counts as 1st B of B2i), B in ch-2 from pr, [*2B, F, 2B, B2i, F2t, 11F, F2t, B2i, 5B, B2i, F2t, 11F, F2t*, B2i]x3, rep bet *'s, ss in 2nd ch of beg ch-2.

Rnd 31: ch2 (counts as 1st B of B2i), B in ch-2 from pr, [*3B, F, 3B, B2i, F2t, 9F, F2t, B2i, 7B, B2i, F2t, 9F, F2t*, B2i]x3, rep bet *'s, ss in 2nd ch of beg ch-2.

Video Part 5. Rnd 32:

<https://youtu.be/q7YLaAHB03k>

Rnd 32: ch2 (counts as B), [*4B, F3i, 5B, F2t, 7F, F2t, B2i, 9B, B2i, F2t, 7F, F2t*, B]x3, rep bet *'s, ss in 2nd ch of beg ch-2.

Video Part 6. Rnds 33, 34:

<https://youtu.be/VJiUCcrjTJ8>

Rnd 33: ch2 (counts as B), [*2B, B2t, F2i, hdc bet F's, F, hdc in bet F's, F2i, B2t, 3B, F2t, 5F, F2t, B2i, F, 9B, F, B2i, F2t, 5F, F2t*, B]x3, rep bet *'s, ss in 2nd ch of beg ch-2.

Rnd 34: ch2 (counts as B), [*B, B2t (2nd leg in 2 posts), 2 F2i, B in hdc, F, B in hdc, 2 F2i, B2t (1st leg in 2 posts), 2B, F2t, 3F, F2t, B2i, B, F2i, B2t, 5B, B2t, F2i, B, B2i, F2t, 3F, F2t*, B]x3, rep bet *'s, ss in 2nd ch of beg ch-2.

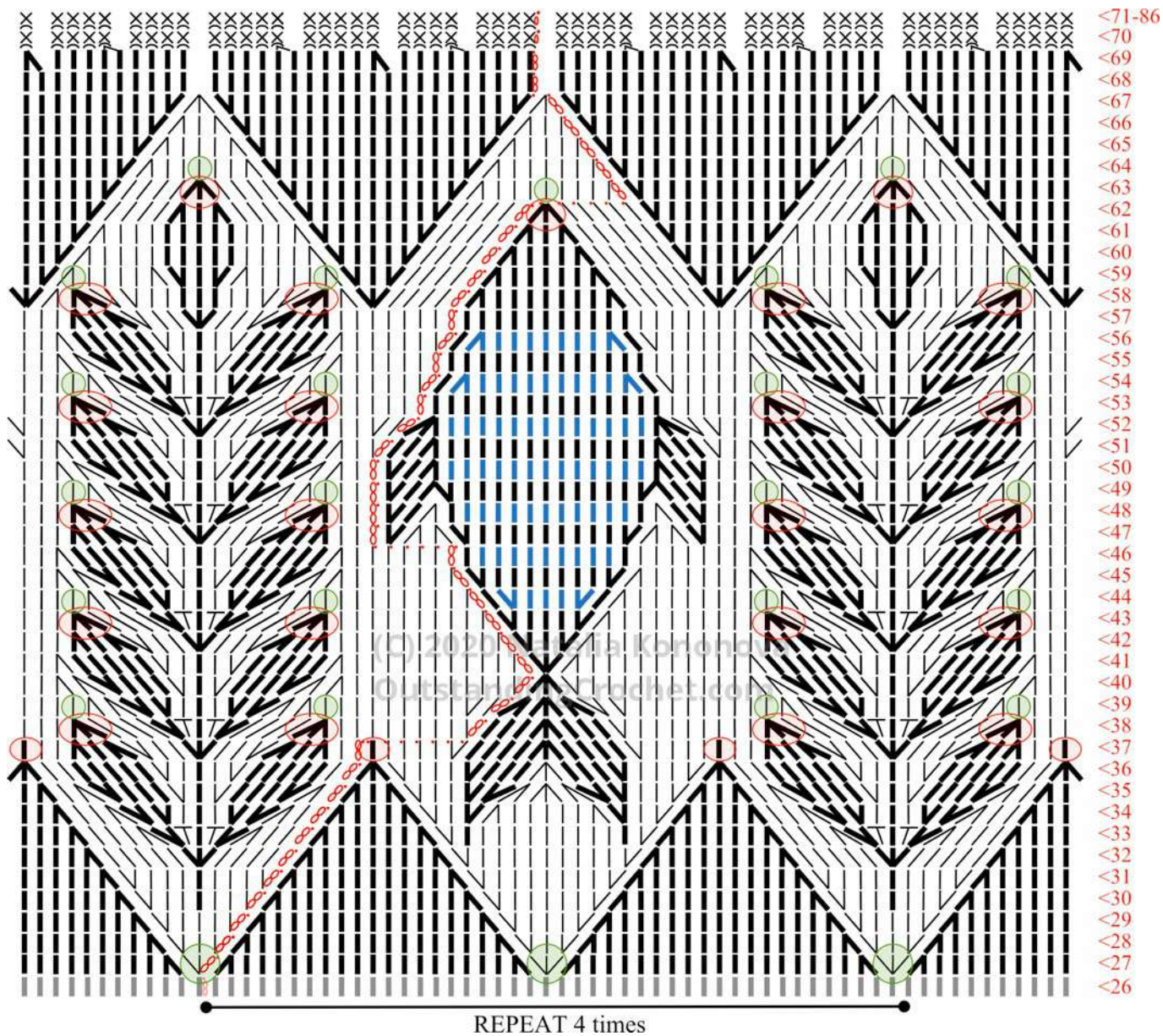


Chart 2. Rnds 26-86.

- | | | |
|------------------------------------|--------------------------|---|
| ○ - ch | ∩ - B2t (2 B together) | ▼ - F3i (3 F in same st) |
| • - ss | ∪ - B2i (2 B in same st) | ▲ - F2t (2 F together) |
| ⊗ - sc blo (sc in back lp) | ∇ - B3i (3 B in same st) | ▲ - F3t (3 F together) |
| ⊗ - sc2-tog blo (2sc blo together) | ┆ - F (front post dc) | ┆ ▲ - do not switch to Color 2 in advance |
| ┆ - hdc (make bet F's) | ▼ - F2i (2 F in same st) | ┆ - F made with Color 1 |
| ┆ - B (back post dc) | | |

Video Part 7. Rnds 35, 37:

<https://youtu.be/7JA8oI7INzU>

Rnd 35: ch2 (counts as B), [*B2t (2nd leg in 2 posts), F2i, 3F, B2i, F, B2i, 3F, F2i, B2t (1st leg in 2 posts), B, F2t, F, F2t, B2i, 2B, 2 F2i, B2t (1st leg in 2 posts), B3t, B2t (2nd leg in 2 posts), 2 F2i, 2B, B2i, F2t, F, F2t*, B]x3, rep bet *'s, ss in 2nd ch of beg ch-2.

Rnd 36: ch2 (counts as B), [*B (in 2 posts), 5F, B2i, B, F, B, B2i, 5F, 2 B (1st in 2 posts), F3t (1st and 3rd legs in 2 posts), B2i, 3B, F2i, 3F, B3t (1st and 3rd legs in 2 posts; 2nd leg in 3 posts), 3F, F2i, 3B, B2i, F3t (1st and 3rd legs in 2 posts)*, B]x3, rep bet *'s, ss in 2nd ch of beg ch-2.

Rnd 37: ch2 (counts as B), [*B, F2t, F, F2t, B2i, 2B, F3i, 2B, B2i, F2t, F, F2t, 2B (finish with Yarn1), with Yarn2 F (in 3 posts of F3t) and finish with Yarn1, 4B, B2i, 4F, F3t (2nd leg in 3 posts), 4F, B2i, 4B (finish last B with Yarn1), with Yarn2 F (in 3 posts; finish with Yarn1)*, B]x3, rep bet *'s, ss in 2nd ch of beg ch-2.

Shift beg of rnd next to the embossed element to minimize visibility of ch-2 at the beg of each round: turn to WS, 7ss (in prev 7sts: F, 4B, B2i), turn.

Video Part 8. Rnds 38, 39:

<https://youtu.be/ivDW6bsuTHU>

Rnd 38: ch2 (counts as 1st B of B2i), B in same st (in 1st B after F from pr; counts as 2nd B of B2i), [*8B (6th in F; finish last B with Yarn1), with Yarn2 F3t (1st and 3rd legs in 2 posts; finish with Yarn1), 4B, F2i, hdc in bet F's, F, hdc in bet F's, F2i, 4B (finish last B with Yarn1), with Yarn2 F3t (1st and 3rd legs in 2 posts; finish with Yarn1), 8B (3rd in F), B2i, 3F, F3t (2nd leg in 3 posts), 3F*, B2i]x3, rep bet *'s, ss in 2nd ch of beg ch-2.

Rnd 39: ch2 (counts as 1st B of B2i), B in same st (in ch-2 from pr), [*B2i, 9B (last is shallow B in F3t), 2 B2t, 2 F2i, B in hdc, F, B in hdc, 2

F2i, 2 B2t, 9B (1st is shallow B in F3t), 2 B2i, F2t, F3t (2nd leg in 3 posts), F2t*, B2i]x3, rep bet *'s, ss in 2nd ch of beg ch-2.

Rnd 40: ch2 (counts as 1st B of B2i), B in same st (in ch-2 from pr), [*10B, B2t, B2t (both legs in 2 posts), F2i, 3F, B2i, F, B2i, 3F, F2i, B2t (both legs in 2 posts), B2t, 10B, B2i, F3t (1st and 3rd legs in 2 posts; 2nd leg in 3 posts)*, B2i]x3, rep bet *'s, ss in 2nd ch of beg ch-2.

Rnd 41: ch2 (counts as 1st leg of B2t), B in 1st B after ch-2 from pr (counts as 2nd leg of B2t), [*10B, B2t (both legs in 2 posts), 5F, B2i, B, F, B, B2i, 5F, B2t (both legs in 2 posts), 10B, B2t, F3i (in 3 posts)*, B2t]x3, rep bet *'s, sk ch-2, ss in 1st B.

Rnd 42: ch2 (counts as 1st leg of B2t), B in 2nd B after ch-2 from pr (counts as 2nd leg of B2t), [*10B (last in 2 posts), F2t, F, F2t, B2i, 2B, F3i, 2B, B2i, F2t, F, F2t, 10B (1st in 2 posts), B2t (2nd leg in 2 posts), F2i, F, F2i*, B2t (1st leg in 2 posts)]x3, rep bet *'s, sk ch-2, ss in 1st B.

Rnd 43: ch2 (counts as 1st leg of B2t), B in 2nd B after ch-2 from pr (counts as 2nd leg of B2t), [*9B and finish last st with Yarn1, with Yarn2 F3t (1st and 3rd legs in 2 posts) and finish with Yarn1, 4B, F2i, hdc in bet F's, F, hdc in bet F's, F2i, 4B and finish last st with Yarn1, with Yarn2 F3t (1st and 3rd legs in 2 posts) and finish with Yarn1, 9B, B2t (2nd leg in 2 posts), F2i, 3F, F2i*, B2t (1st leg in 2 posts)]x3, rep bet *'s, sk ch-2, ss in 1st B.

Rnd 44: ch2 (counts as 1st leg of B2t), B in 2nd B after ch-2 from pr (counts as 2nd leg of B2t), [*9B (last is shallow B in F3t), 2 B2t, 2 F2i, B in hdc, F, B in hdc, 2 F2i, 2 B2t, 9B (1st is shallow B in F3t), B2t (2nd leg in 2 posts), F and finish with Yarn1, *fish stripe: with Yarn1 F2i, 3 F, F2i, and finish with Yarn2,*

F*, B2t (1st leg in 2 posts)]x3, rep bet *'s, sk ch-2, ss in 1st B.

Rnd 45: ch2 (counts as 1st leg of B2t), B in 2nd

B after ch-2 from pr (counts as 2nd leg of B2t), [*6B, B2t, B2t (both legs in 2 posts), F2i, 3F, B2i, F, B2i, 3F, F2i, B2t (both legs in 2 posts), B2t, 6B, B2t (2nd leg in 2 posts), F2i, 7F, F2i*, B2t (1st leg in 2 posts)]x3, rep bet *'s, sk ch-2, ss in 1st B.

Rnd 46: ch2 (counts as B), [*6B, B2t (both legs in 2 posts), 5F, B2i, B, F, B, B2i, 5F, B2t (both legs in 2 posts), 7B (last in 2 posts), F and finish with Yarn1,

fish stripe: with Yarn1 9F and finish with Yarn2,

F*, B (in 2 posts)]x3, rep bet *'s, ss in 2nd ch of beg ch-2.

Shift beg of round: with RS facing, 5ss (in 5B).

Rnd 47: ch2 (counts as B), [*2B (2nd in 2 posts), F2t, F, F2t, B2i, 2B, F3i, 2B, B2i, F2t, F, F2t, 3B (1st in 2 posts), F2i, 2 B2t, F2i, 9F, F2i, 2 B2t, F2i*, B]x3, rep bet *'s, ss in 2nd ch of beg ch-2.

Rnd 48: ch2 (counts as B), [*2B and finish last B with Yarn1, with Yarn2 F3t (1st and 3rd legs in 2 posts) and finish st with Yarn1, 4B, F2i, hdc in bet F's, F, hdc in bet F's, F2i, 4B and finish last B with Yarn1, with Yarn2 F3t (1st and 3rd legs in 2 posts) and finish st with Yarn1, 3B, F2i, F, B2t (both legs in 2 posts), F and finish with Yarn1,

fish stripe: with Yarn1 11F and finish with Yarn2,

F, B2t (both legs in 2 posts), F, F2i*, B]x3, rep bet *'s, ss in 2nd ch of beg ch-2.

Rnd 49: ch2 (counts as B), [*3B (last is shallow B in F3t), 2 B2t, 2 F2i, B in hdc, F, B in hdc, 2 F2i, 2 B2t, 4B (1st is shallow B in F3t), F2i, F, F2t (1st leg in next F, sk B2t, 2nd leg in next F), F in same st as 2nd leg of prev F2t, 12F, F2t (1st leg in same st as last of 12F, sk B2t, 2nd leg in next F), F, F2i*, B]x3, rep bet *'s, ss in 2nd ch of beg ch-2.

Rnd 50: ch2 (counts as B), [*B, B2t, B2t (both legs in 2 posts), F2i, 3F, B2i, F, B2i, 3F, F2i, B2t (both legs in 2 posts), B2t, 2B, F2i, F, F2t

(2nd leg in 2 posts) and finish with Yarn1, *fish stripe: with Yarn1 13F and finish with Yarn2,*

F2t (1st leg in 2 posts), F, F2i*, B]x3, rep bet *'s, ss in 2nd ch of beg ch-2.

Rnd 51: ch2 (counts as 1st B of B2i), B in ch-2 from pr, [*B, B2t (both legs in 2 posts), 5F, B2i, B, F, B, B2i, 5F, B2t (both legs in 2 posts), B, B2i, 2F, F2t (2nd leg in 2 posts), 13F, F2t (1st leg in 2 posts), 2F*, B2i]x3, rep bet *'s, ss in 2nd ch of beg ch-2.

Rnd 52: ch2 (counts as 1st B of B2i), B in ch-2 from pr, [*B2i, 2B (2nd in 2 posts), F2t, F, F2t, B2i, 2B, F3i, 2B, B2i, F2t, F, F2t, 2B (1st in 2 posts), 2 B2i, F3t (3rd leg in 2 posts) and finish with Yarn1,

fish stripe: with Yarn1 13F and finish with Yarn2,

F3t (1st leg in 2 posts)*, B2i]x3, rep bet *'s, ss in 2nd ch of beg ch-2.

Rnd 53: ch2 (counts as B), [*5B and finish last st with Yarn1, with Yarn2 F3t (1st and 3rd legs in 2 posts) and finish st with Yarn1, 4B, F2i, hdc in bet F's, F, hdc in bet F's, F2i, 4B and finish last st with Yarn1, with Yarn2 F3t (1st and 3rd legs in 2 posts) and finish with Yarn1, 6B, 15F (1st and last in 3 posts)*, B]x3, rep bet *'s, ss in 2nd ch of beg ch-2.

Rnd 54: ch2 (counts as 1st B of B2i), B in ch-2 from pr, [*6B (last is shallow B in F3t), 2 B2t, 2 F2i, B in hdc, F, B in hdc, 2 F2i, 2 B2t, 6B (1st is shallow B in F3t), B2i, F and finish with Yarn1,

fish stripe: with Yarn1 F2t, 9F, F2t and finish with Yarn2,

F*, B2i]x3, rep bet *'s, ss in 2nd ch of beg ch-2.

Rnd 55: ch2 (counts as B), [*5B, B2t, B2t (both legs in 2 posts), F2i, 3F, B2i, F, B2i, 3F, F2i, B2t (both legs in 2 posts), B2t, 6B, 13F (2nd and 12th in 2 posts)*, B]x3, rep bet *'s, ss in 2nd ch of beg ch-2.

Rnd 56: ch2 (counts as 1st B of B2i), B in ch-2 from pr (counts as 2nd B of B2i), [*5B, B2t (both legs in 2 posts), 5F, B2i, B, F, B, B2i, 5F,

B2t (both legs in 2 posts), 5B, B2i, F and finish with Yarn1,

fish stripe: with Yarn1 F2t, 7F, F2t and finish with Yarn2,

F*, B2i]x3, rep bet *'s, ss in 2nd ch of beg ch-2.

Rnd 57: ch2 (counts as B), [*7B (last in 2 posts), F2t, F, F2t, B2i, 2B, F3i, 2B, B2i, F2t, F, F2t, 8B (1st in 2 posts), 11F (2nd and 10th in 2 posts)*, B]x3, rep bet *'s, ss in 2nd ch of beg ch-2.

Rnd 58: ch2 (counts as B), [*4B, F3i, B2t and finish with Yarn1, with Yarn2 F3t and finish with Yarn1, 2 B2i, 2B, 3F, 2B, 2 B2i and finish last B with Yarn1, with Yarn2 F3t and finish with Yarn1, B2t, F3i, 5B, F2t, 7F, F2t*, B]x3, rep bet *'s, ss in 2nd ch of beg ch-2.

Rnd 59: ch2 (counts as B), [*4B, F2i, F, F2i, B2t (1st leg in 2 posts; 2nd leg is shallow B in F3t), 4B, B2t, F2i, F, F2i, B2t, 4B, B2t (1st leg is shallow B in F3t; 2nd leg in 2 posts), F2i, F, F2i, 5B, F2t, 5F, F2t*, B]x3, rep bet *'s, ss in 2nd ch of beg ch-2.

Rnd 60: ch2 (counts as B), [*4B, F2i, 3F, F2i, B2t (1st leg in 2 posts), 4 B (last in 2 posts), 5F, 4B (1st in 2 posts), B2t (2nd leg in 2 posts), F2i, 3F, F2i, 5B, F2t, 3F, F2t*, B]x3, rep bet *'s, ss in 2nd ch of beg ch-2.

Rnd 61: ch2 (counts as B), [*4B, F2i, 5F, F2i, B2t (1st leg in 2 posts), 3B, 5F, 3B, B2t (2nd leg in 2 posts), F2i, 5F, F2i, 5B, F2t, F, F2t*, B]x3, rep bet *'s, ss in 2nd ch of beg ch-2.

Rnd 62: ch2 (counts as B), [*4B, F2i, 7F, F2i, 4B (1st in 2 posts), F2t, F, F2t, 4B (last in 2 posts), F2i, 7F, F2i, 5B and finish with Yarn1, with Yarn2 F3t and finish with Yarn1*, B]x3, rep bet *'s, ss in 2nd ch of beg ch-2.

Shift beg of round: turn to WS, 6ss (in prev 6sts: F3t and 5B), turn.

Rnd 63: ch2 (counts as 1st leg of B2t), B in 2nd B after F2i from pr (counts as 2nd leg of B2t), [*7B (4th is shallow B in 3 posts of F3t), B2t, F2i, 9F, F2i, 4B and finish with Yarn1, with Yarn2 F3t and finish with Yarn1, 4B, F2i, 9F,

F2i*, B2t]x3, rep bet *'s, sk ch-2, ss in 1st B.

Rnd 64: ch2 (counts as 1st leg of B2t), B in 2nd B after ch-2 from pr (counts as 2nd leg of B2t), [*5B, B2t (2nd leg in 2 posts), F2i, 11F, F2i, B2t, 5B (3rd is shallow B in 3 posts of F3t), B2t, F2i, 11F, F2i*, B2t (1st leg in 2 posts)]x3, rep bet *'s, sk ch-2, ss in 1st B.

Rnd 65: ch2 (counts as 1st leg of B2t), B in 2nd B after ch-2 from pr (counts as 2nd leg of B2t), [*3B, B2t (2nd leg in 2 posts), F2i, 13F, F2i*, B2t (1st leg in 2 posts)]x7, rep bet *'s, sk ch-2, ss in 1st B.

Rnd 66: ch2 (counts as 1st leg of B2t), B in 2nd B after ch-2 from pr (counts as 2nd leg of B2t), [*B, B2t (2nd leg in 2 posts), F2i, 15F, F2i*, B2t (1st leg in 2 posts)]x7, rep bet *'s, sk ch-2, ss in 1st B.

Rnd 67: ch2 (counts as 1st leg of B3t), B2t (1st leg in 2nd B after ch-2 from pr, 2nd leg in 2 posts; counts as 2nd and 3rd legs of B3t), [*F2i, 17F, F2i*, B3t (1st and 3rd legs in 2 posts)]x7, rep bet *'s, with Yarn1 ss in B2t. (176sts)

Dec Rnd 68: with Yarn2 ss in next F, ch2 (doesn't count as st), F in same st, 20F, [sk B3t, 21F]x7, sk B3t, sk ch-2, ss in 1st F. (168 sts)

Dec Rnd 69: ch2 (doesn't count as st), F in same st (in 1st F from pr), 8F, F2t, 10F, [9F, F2t, 10F]x7, sk ch-2, with Yarn1 ss in 1st F. (160sts)

Upper edge backing

To achieve consistent gauge throughout the pattern, 16sts are decreased in order to align the gauges of sc blo and F stitches.

Dec Rnd 70: ch1 (doesn't count as st), sc blo in same st, [*3sc blo, sc2tog blo, 8sc blo, sc2tog blo*, 5sc blo]x7, rep bet *'s, 4sc blo, ss blo in 1st sc. (144sts)

Rnds 71-86: ch1 (doesn't count as st), sc blo in same st, 143sc blo, ss blo in 1st sc. Fasten off after Rnd 86. (144sts)

Reinforcing upper edge backing with buckram:

- To determine the size of the strip for the upper edge backing, unfold it and measure its width. Multiply the width by 2 and add 2cm to account for the overlapping of the short edges. The approximate measurements for the strip are approximately 7cm x 80cm (2 ¾" x 31 ½"). Cut a piece of buckram or other stiff interfacing to measurements.
- To reinforce the upper edge of the bag, turn bag inside out and apply buckram interfacing to the wrong side of the upper edge backing. Overlap edges of the buckram. It's important to note that interfacing doesn't fuse well to crocheted fabric, so basting and stitching are recommended.
- Use zig-zag or other stretchable stitch to secure the upper, bottom, and overlapped side edges of the interfacing to the bag's upper edge backing.
- Finally, fold the backing in and hand-stitch the edge to the wrong side of the bag if you do not plan to add a lining.

Handles

Handle attaching strip (x4):



Picture 1.

Row 1 (RS): locate 8 middle sts of Round 69, positioned above any fish, join Yarn2 in front

post of 1st of 8sts, with both working end and tail, ch1, drop tail, ch1 (2 ch count tog as F), 7F, turn.

Row 2 (WS): ch2 (counts as B), 7B, turn.

Row 3 (RS): ch2 (counts as F), 7F, turn.

Rows 4-8: rep Rows 2, 3. Fasten off, leaving 30cm/ 12" end for a seam. Weave in beg tail. Repeat for the rem 3 fish (picture 1).

Spiral cord handles (x2):

Video: <https://youtu.be/Th1hfMbRoAQ>

Step pictures on p. 15.

- With Yarn2 leave 30cm/ 12" tail, make 78cm / 30 ¾" long 8-sts spiral cord, starting with one 4sc-row (video and pictures show 10 rows). Fasten off, leaving 30cm / 12" tail. Measure while cord is fully stretched.
- Keep in mind that the spiral cord has stretchability. To prevent it from stretching excessively, you can insert a narrow non-stretchable tape inside the cord after creating approximately 1cm of the cord. Securely sew the ends of the tape to the beginning and end of the cord to ensure it stays in place.

Loop at the end of spiral cord handle (x4):

- Measure and mark a distance of 15cm/ 5 7/8" from each end of the handle.



Picture 2.

- Thread tapestry needle with 30cm/ 12" tail. Sew border row to the marked spot on the

cord, making stitches through 4sc-row and cord (picture 2).

- Weave in tail.

Loop seam cover (x4):

Video for slip stitch rib:

<https://youtu.be/aQ5ue6qyKbo>

- With Yarn2, ch14 and work 9 rows of slip stitch rib.
- Fasten off, leaving 30cm/12" tail.
- Thread tapestry needle with the tail and position the strip over the loop seam (picture 3).

- Ensure that the short edges of the strip face the inner side of the bag.
- Begin sewing at the top of the strip (picture 3) using small invisible stitches to secure the seam.
- Use overcast stitch to stitch short edges of the strip together (picture 4).
- Secure the seam and proceed to sew the bottom of the strip to the handle using back stitch. Make small invisible stitches on the right side of the strip to prevent it from sliding off (picture 5).
- Finally, weave in beginning tail of the strip.



Picture 3.



Picture 4.



Picture 5.

Attach handles to the bag (x4):

- Insert handle attaching strip into the loop at the end of the handle, ensuring that the loop seam cover is facing the inner side of the bag (picture 6).
- Thread tapestry needle with 30cm/12" tail from the handle attaching strip.

Fold strip to WS and sew each stitch at the edge of the strip securely to both loops of one of the 8 stitches from which the strip was started (picture 7). Remember that the upper edge backing stitches were made in the same back loops.

- Secure seam by tying off the thread and weave in loose tail.



Picture 6.



Picture 7.



Picture 8.



Picture 9.



Picture 10. Repeat 4 times.



Picture 11.

Optional lining

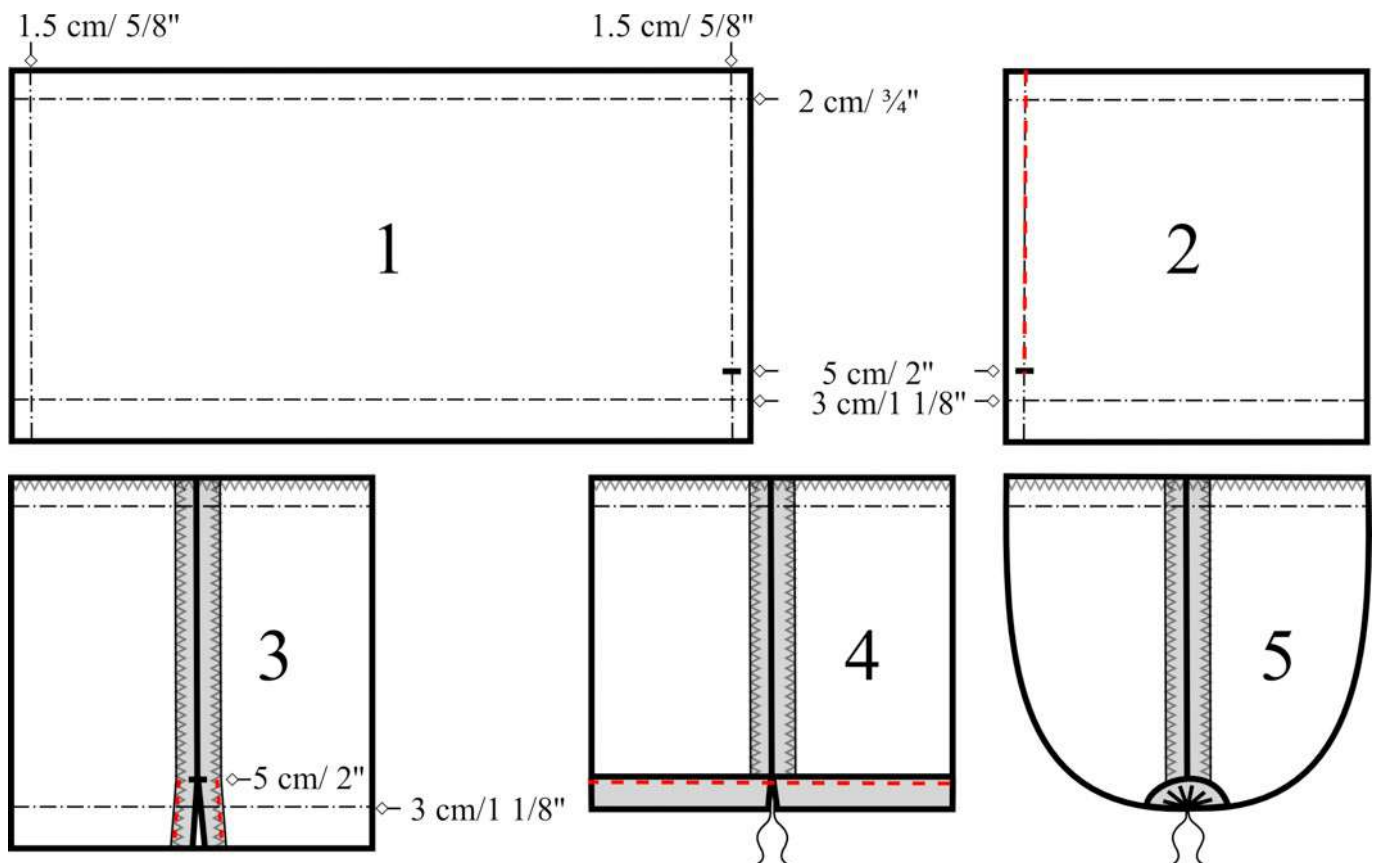
1. **Length:** Measure the finished bag from the folded upper edge backing to the bottom center. Add 5cm/2" for seam allowances.
Width: Measure the bag width, multiply by 2, add 3cm/1 1/8" for seam allowance.
 Mark the seam allowances: 2cm/ 3/4" at the upper edge, 1.5cm/ 5/8" at both sides, and 3cm/1 1/8" at the bottom. Also, mark 5cm/2" of the side allowance starting from the bottom seam allowance.
2. Stitch sides together from the upper edge to the 5cm/ 2" mark.
3. Overcast the upper edge.
 Overcast the side edges separately and press them open. Edgestitch the allowances along

- the 5cm/ 2" mark from the bottom.
4. Press up a 3cm/ 1 1/8" hem. Tuck under 1cm/ 3/8" of the raw edge. Baste and edgestitch it in place.
5. Insert drawstring into 2cm/ 3/4" slit at the bottom, pull it, and tie the ends.
6. Tuck 2cm/ 3/4" of the lining under the bag's upper edge backing. Baste and hand-stitch the backing and lining to the bag's wrong side using small invisible stitches.

Finishing and Care

Weave in all ends.

Hand-wash in lukewarm water with a bit of mild detergent, rinse, use a towel to squeeze out excess moisture, lay flat to dry.



Spiral cord strap:

Video: <https://youtu.be/Th1hfMbRoAQ>



Flat part to attach strap to D-ring. Row 1: leave 20cm/ 8" end for a seam, ch5, sc in 2nd ch from hook, 3sc, turn (4sc).
Pictures shows 10 sc rows, but for Corfu bag make only 1.



4sc-foundation results in 8sts-cord.

Spiral part. Rnd 1: ch1, sc blo in same st, 3sc blo,



Turn, 4sc (in 2nd lp of the same 4sc, but working from other side. (8sc)



Examine the back of the single crochet stitch. You will notice 4 lps: 2 horizontal loops and 2 vertical lps.



Crochet in a spiral fashion by inserting the hook from above into the right vertical loop (for right-handed individuals). For left-handed individuals, work in the left vertical loop.



Make sc in right vertical lp of side sc.



To make the first round easier, you have two options. You can either draw a piece of yarn through all eight right vertical loops, or you can place markers: 1st lp,



2nd lp,



3rd lp,



4th lp, ...



8th lp.



Rnd 2: sc in 1st lp from above,



sc in 2nd lp,



sc in 3rd lp,

sc in 4th lp.



Turn to other side, sc in 5th lp,

..., sc in 8th lp.



Completed Rnd 2.



Do not join the round; instead, continue working in a spiral mode by repeating Round 2.



After a few rounds, you will notice that the right vertical loops start to appear stretched between stitches and become easier to locate.





Continue working in a spiral pattern until you reach the desired length of the cord. Stop when the last stitch aligns with the last single crochet stitch of Round 1 in the spiral section.

Take lp off hook, insert hook in both lps (back and front) of next sc, pick up lp, and draw it through st.



Insert hook in 2sts (1 from each side),



sc.



Make 3 more sc in pairs of sts from 2 sides, turn.



For other projects, you have the option to make additional rows of single crochet, but for this bag, only one row is needed. Fasten off, leaving a 20 cm / 8" tail for the seam.



In the picture, you can see 10 rows of single crochet at the beginning and end of the cord, which are needed to attach the cord to D-rings if applicable. However, for this specific project, you will only need one row of 4 single crochet at the beginning and end of the strap.

Optional oblong bottom



Size

- Approximate bag measurements:
 - Length: 30cm (16 3/8") from the bottom center to the upper edge
 - Width: 38.8cm (15 1/4")
 - Loaded bag height: 26cm (10 1/4")
 - Handles length: 64cm (25 1/4")
 - bottom width: 8cm/ 3 1/8"

Instructions

Video for bottom:

<https://youtu.be/ePX9jFZTeGU>.

Foundation cord video:

<https://youtu.be/D2qUB8t4uc8>

Chart 1 on next page.

Rnd 1: With Yarn2 65sts of foundation cord, ch3 (counts as dc), dc2inc (in same st), 63dc,

dc5inc (in last fnd st), 63dc (in same fnd, but from other side), dc2inc (in same ch as beg dc2inc), ss in 3rd ch of beg ch-3. (136sts)

Rnd 2: ch2 (doesn't count as st throughout), F in beg ch-3 from pr, 2 F2i, 63F, 2 F2i, F, 2 F2i, 63F, 2 F2i, ss in 1st F (ignore beg ch-2 throughout). (144 sts)

Rnd 3: ch2, F in 1st F from pr, [F, F2i]x2, 63F, [F2i, F]x2, F, [F, F2i]x2, 63F, [F2i, F]x2, ss in 1st F. (152 sts)

Rnd 4: ch2, F in 1st F from pr, F, F2i, 2F, F2i, 65F, F2i, 2F, F2i, 3F, F2i, 2F, F2i, 65F, F2i, 2F, F2i, F, ss in 1st F. (160 sts)

Rnd 5: ch2, F in 1st F from pr, 2F, F2i, 3F, F2i, 65F, F2i, 3F, F2i, 5F, F2i, 3F, F2i, 65F, F2i, 3F, F2i, 2F, ss in 1st F. (168 sts)

Rnd 6: ch2, F in 1st F from pr, 2F, F2i, 5F, F2i, 65F, [F2i, 5F]x3, F2i, 65F, F2i, 5F, F2i, 2F, ss

in 1st F. (176 sts)

F). (176sts)

Mark stitches for making B3i: pm in 1st F of Rnd 6, [sk 21F, pm in next F]x7 (21F rem to 1st

Proceed to Rnd 27 on p. 6.

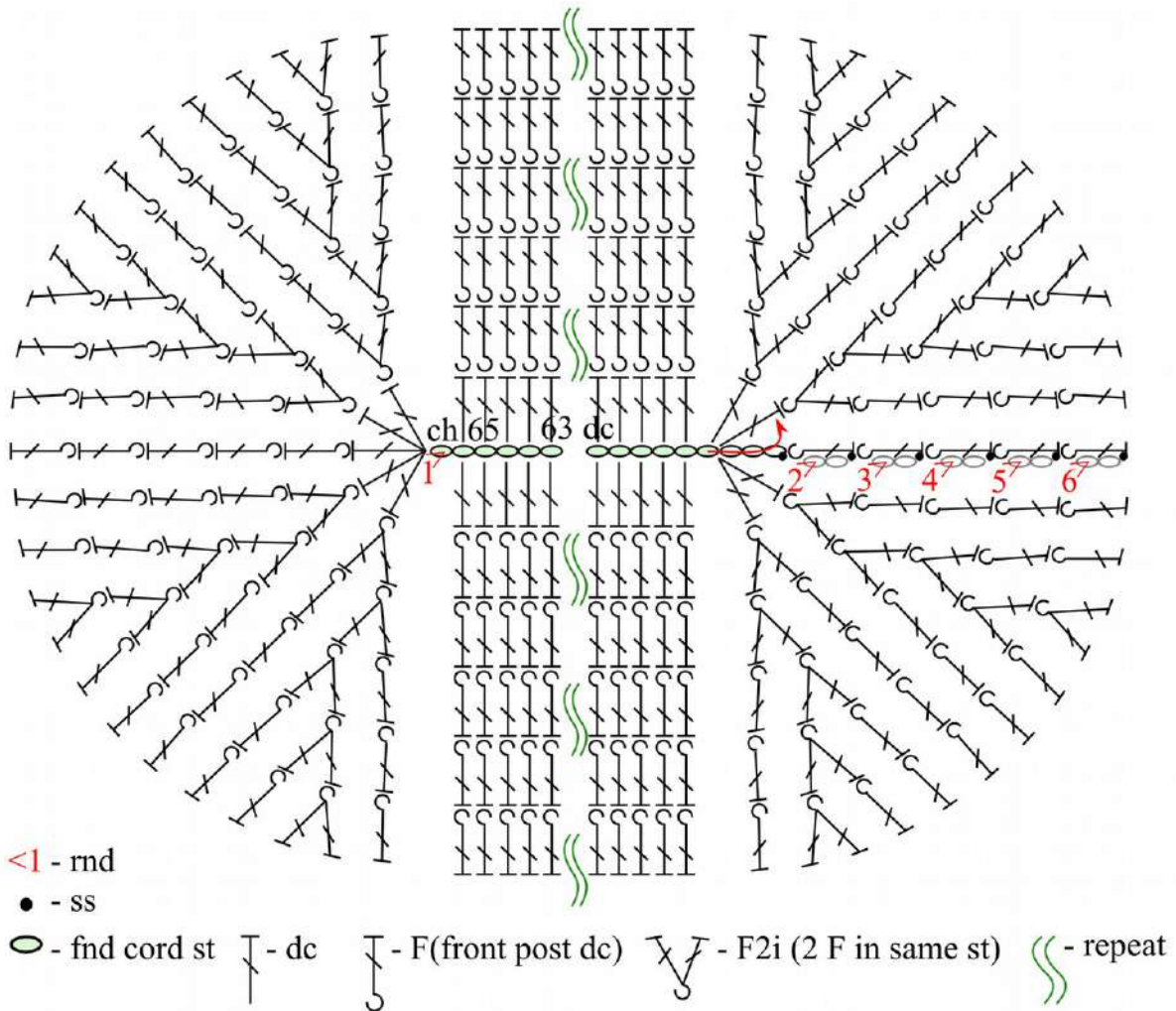


Chart 1. Optional oblong bottom.