

Lili Backpack



Skill Level

- Intermediate.

Acknowledgment

- Thank you to volunteers in no particular order: Dalia Remeikyte, Barbara Dobrska, Karin Terpstra, Yannic Helsen, Linda Toering, Lisa Marlow for their tremendous help testing and editing this pattern!

Copyright information

- © This pattern and all images are copyrighted by and intellectual property of Natalia Kononova.
- Do not copy, share, resell, or forward this pattern to anyone. No part of this work may be reproduced, transmitted, translated or published in any form or by any means without prior written permission.
- If you bought this pattern from any other person but the designer Natalia Kononova, or downloaded it for free, please, delete file immediately. Thank you!

Size

- Width x Height: 35cm/ 13 ¾" x 34.5cm/ 13 5/8".

Materials and Tools

- **Scheepjes Whirl** get from [Wool Warehouse*](#) or [LoveCrafts*](#) (60% Cotton x 40% Acrylic, Fingering/ 4 ply weight, 215-225g/ 1000m/ 1094yds).

YarnB: 83g/ 413yds in 755 Blueberry Bambam for bag body.

- **Scheepjes Whirlette** get from [Wool Warehouse*](#) or [LoveCraft*s](#) (60% Cotton x 40% Acrylic, Fingering/ 4 ply weight, 100g/ 455m/ 497.6yds).

YarnA: 88g/ 438yds in 868/ Bilberry/ matching Whirl darker end color (including 22g for bottom, 33g for upper edge, 33g for straps),

YarnC: 83g/ 413yds in 860/ Ice as a contrast color.

*Affiliated links (I receive a small commission from sellers at no additional cost for you).

- Crochet hook 2.75mm, tapestry needle, markers, 8mm/ 3/8" sew-on snaps (x2) for folded backpack sides.
- **Lining:** about 42cm/ 16 ½" (measure bag before buying) of quilted fabric, matching thread, sewing machine.

Abbreviations (American crochet terminology)

"	inches	dc2tog	2dc together	pr	previous row
*	rep instructions for single * as directed	dec	decrease	prev	previous
...	rep instructions bet **'s as many times as noted after	dtr	double treble	rem	remain(ing)
[], { }	rep instructions bet []'s or { }'s as many times as noted after	est	extended st	rep	repeat
approx	approximately	edc	extended dc	RH	right hand
beg	begin/beginning	flo	through front loop only	rnd(s)	round(s)
bet	between	FLst	st made in front loop	RS	right side
blo	through back loop only	fnf	foundation	sc	single crochet
BLst	st made in back loop	FPst	st made in front post	sc2inc	2sc in same st
BPst	st made in back post	g	gram(s)	sc2tog	2sc together
ch	chain	hdc	half double crochet	sk	skip
		inc	increase	ss, ss	slip stitch
		leg	part of decreasing st	sp(s)	space(s)
		LH	left hand	st(s)	stitch(es)
		lp(s)	loop(s)	tog	together
		m	marker	tr	treble crochet
				tr2inc	2 tr in same st

ch-# sp	chain space	m1-st	stitch with marker 1	tr2tog	2 tr together
cm	centimeter(s)	mm	millimeter(s)	ttr	triple treble
con	connecting	oz	ounce	WS	wrong side
cont	continue	p	picot	yd(s)	yard(s)
dc	double crochet	PU	pick up	yo	yarn over
dc2inc	2dc in same st	pm	place marker		

Videos

Videos are also **included in written instructions**.

Videos only **show highlights** to help you with written instructions and charts.

If a video doesn't play, try to either save it to your playlist on YouTube or add pattern to pdf reading app on your device or type link into a browser or contact for assistance:

<https://www.outstandingcrochet.com/contact>

Videos are **parts of a paid pattern** and prohibited from being shared or forwarded to anyone. Thank you!

- **Foundation cord:** <https://youtu.be/D2qUB8t4uc8>
- **Bottom Rounds 1, 2:** <https://youtu.be/XEP3AcIPy18>
- **Introduction to mosaic charts:** <https://youtu.be/badWBBFQOus>
- **Rounds 1-9:** <https://youtu.be/SbMaAkxDpC8>
- **Invisible join** for rounds that start and end with dc (author: Linda Toering): <https://youtu.be/Rr1gLY2AiFY>
- **Rounds 14-17:** <https://youtu.be/RB-jYaHCRhk>
- **Rounds 18-20:** <https://youtu.be/wdkBpgrSBOw>
- **Rounds 21-25:** <https://youtu.be/pPRa9HCHisc>
- **Rounds 26-30:** <https://youtu.be/NBeaGw3sIaQ>
- **Rounds 31-43:** <https://youtu.be/tCixnwwveAI>
- **Rounds 56-57:** <https://youtu.be/-MIfDDhfgco>
- **Waistcoat stitch in rows for straps:** <https://youtu.be/GRNn8n7DA2Q>
- **Thermal stitch for straps (alternative method):** <https://youtu.be/wfZuxby-m-c>

Before starting

- **Check pattern page for corrections and updates before starting:**
<https://www.outstandingcrochet.com/lili-backpack-crochet-pattern>
- **For pattern support** join [Outstanding Crochet and Friends Facebook group](#)
- **To receive exclusive discounts**, sign up for newsletters:
www.OutstandingCrochet.com

Gauge

- **Single crochet stitch through back loop only:** 30 sts x 30 rows = 10 x 10cm/ 4 x 4".

Bag bottom

Chart 1 on p. 5.

Video for bottom Rounds 1, 2:

<https://youtu.be/XEP3AcIPy18>

Special stitch:

- **inc:** increase, 2sc blo in same st.

Rnd 1 (RS): with A make 32sts of foundation cord, turn, ch1 (doesn't count as st throughout), 3sc in same st, 30sc, 3sc in last st, *other side of fnd cord (work in same sts from other side):* 30sc, ss in 1st sc. (66sc)

Rnd 2 (RS): ch1, *3inc, pm, 30sc, **pm**, rep from * except don't pm at the end of rnd, ss in 1st sc (later in the pattern: ss). (72sc)

Note: 30sc in the middle of both long sides are separated by markers from short sides with increases to help you count sts. Move markers up in every round.

Rnd 3: ch1, *[inc, sc]x3, 30sc, rep from *, ss. (78sc)

Rnd 4: ch1, *[2sc, inc]x3, 30sc, rep from *, ss. (84sc)

Rnd 5: ch1, *[inc, 3sc]x3, 30sc, rep from *, ss. (90sc)

Rnd 6: ch1, *3sc, [inc, 4sc]x2, inc, sc, 30sc,

rep from *, ss. (96sc)

Rnd 7: ch1, *sc, [inc, 5sc]x2, inc, 4sc, 30sc, rep from *, ss. (102sc)

Rnd 8: ch1, *[6sc, inc]x3, 30sc, rep from *, ss. (108sc)

Rnd 9: ch1, *4sc, [inc, 7sc]x2, inc, 3sc, 30sc, rep from *, ss. (114sc)

Rnd 10: ch1, *[inc, 8sc]x3, 30sc, rep from *, ss. (120sc)

Rnd 11: ch1, *7sc, [inc, 9sc]x2, inc, 2sc, 30sc, rep from *, ss. (126sc)

Rnd 12: ch1, *3sc, [inc, 10sc]x2, inc, 7sc, 30sc, rep from *, ss. (132sc)

Rnd 13: ch1, *7sc, [inc, 11sc]x2, inc, 4sc, 30sc, rep from *, ss. (138sc)

Rnd 14: ch1, *[12sc, inc]x3, 30sc, rep from *, ss. (144sc)

Rnd 15: ch1, *5sc, [inc, 13sc]x2, inc, 8sc, 30sc, rep from *, ss. (150sc)

Rnd 16: ch1, *sc, [inc, 14sc]x2, inc, 13sc, 30sc, rep from *, ss. (156sc)

Rnd 17: ch1, *10sc, [inc, 15sc]x2, inc, 5sc, 30sc, rep from *, ss. (162sc)

Rnd 18: ch1, *4sc, [inc, 16sc]x2, inc, 12sc, 30sc, rep from *, ss. (168sc)

Rnd 19: ch1, *15sc, [inc, 17sc]x2, inc, 2sc, 30sc, rep from *, ss. (174sc)

Rnd 20: **ch1**, *10sc, [inc, 18sc]x2, inc, 8sc, 30sc, rep from *, ss. (180sc)

Rnd 21: ch1, *5sc, [inc, 19sc]x2, inc, 14sc, 30sc, rep from *, ss. (186sc)

Rnd 22: ch1, *15sc, [inc, 20sc]x2, inc, 5sc, 30sc, rep from *, ss. (192sc)

Rnd 23: ch1, *11sc, [inc, 21sc]x2, inc, 10sc, 30sc, rep from *, ss. (198sc)

Rnd 24: ch1, *[inc, 22sc]x3, 30sc, rep from *, ss. (204sc)

Fasten off. Wash and dry according to Care section on p. 12. Measure length (L=26cm/

10 ¼") and width (W=16cm/ 6 ¼"). Trace bag template for making lining.
 bottom to a piece of paper and cut out a

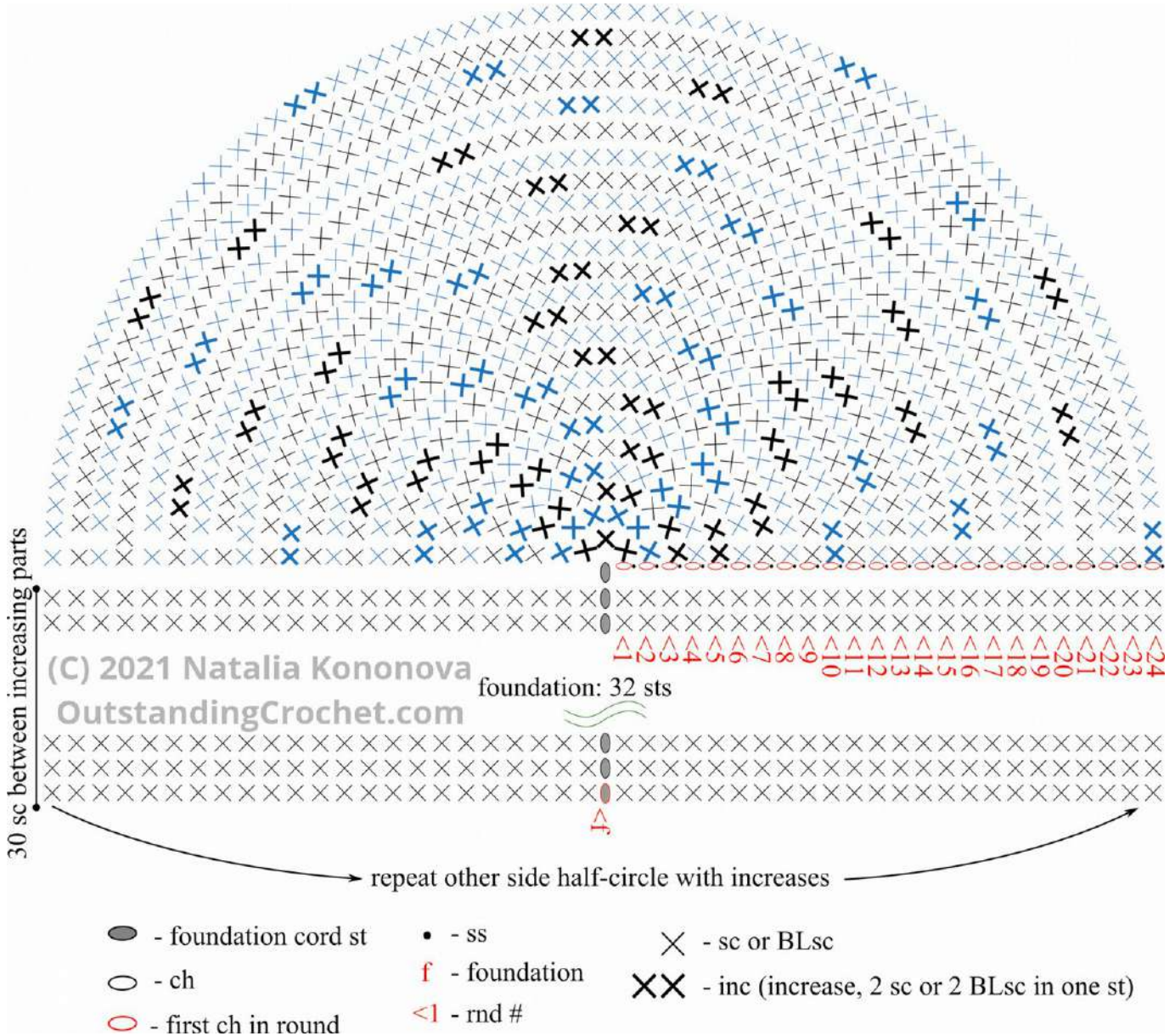


Chart 1. Bottom.

Rules for overlay mosaic crochet

- **Overlay mosaic crochet** is worked on **right side (RS) only**.
- **Each round** is made with **one color. Yarn1 and Yarn2 are alternated** in each round. Switch to next color at the end of rnd: make joining ss in back loop of first stitch with next rnd color, tighten all loops.
- **Sc (empty blocks on charts):** made in stitches from prev round through back loop only. Abbreviation *blo* (back loop only) is skipped to simplify instructions.
- **Dc, dc- increases and decreases:** drop down stitches, made in stitches from corresponding color rnd (2nd rnd down) and through front loop only. Abbreviation *flo* (front loop only) is skipped to simplify instructions.
- **1st st of each mosaic rnd:** **sc** is made in back loop of pr st, **dc** is made in front loop of st from corresponding color rnd (2nd rnd down).
- **Last ss of each mosaic rnd** is made with next rnd color in back loop of 1st st.
- Use **invisible join technique** for rounds that start and end with dc (Videos section).

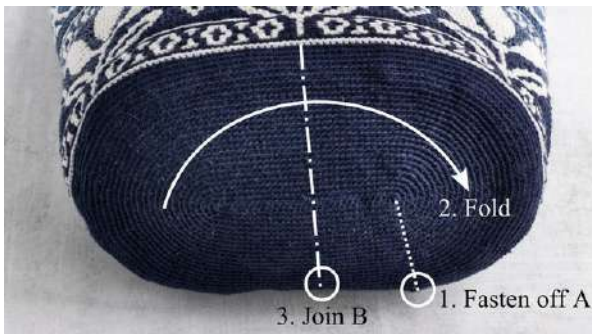
Bag body

Charts 2, 3 on p. 7, 11. Step pictures for Rnds 13-43 on p. 13.

Special stitches:

- **FPdc, FPTr (front post stitches):** made in directed stitches from 2nd rnd down/ same color rnd.
- **FPhdc:** made in dc from prev rnd.
- **Leg(s):** parts of decreasing sts. For example, **dc2dog** has two dc-legs.
- /-dc, /-sc: right-slanted dc or sc.
- \-dc, \-sc: left-slanted dc or sc.

Shorter bag: skip Rounds 67-82.



Join B: fold bottom in half width-wise, join B

in fold at the long side (the one with rounds joining line).

Rounds 1-9 with charts introduction:

<https://youtu.be/SbMaAkxDpC8>

Rnds 1-3: with B ch1, 204sc, ss. Switch to upcoming color at the end of Rnd 3: make last ss with C.

Rnd 4: with C ch1, 204sc, with B ss.

Rnd 5: with B ch1, 204sc, with C ss.

Rnd 6: rep Rnd 4.

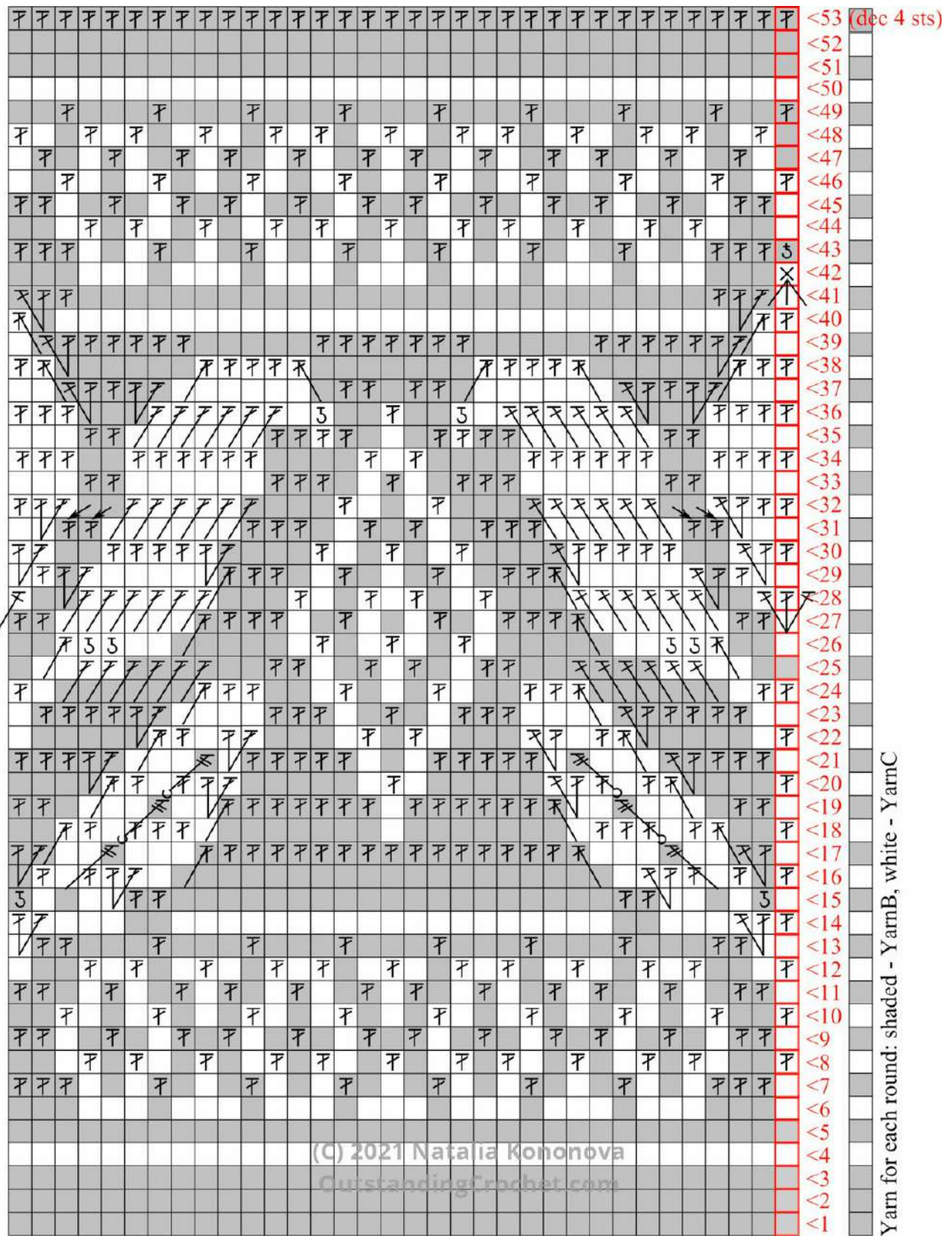
Rnd 7: with B *sc, 3dc, [3sc, dc]x6, 3sc, 3dc, rep from * x5, with C ss.

Rnd 8: with C *dc, 3sc, dc, sc, dc, [2sc, dc, 2sc, dc, sc, dc]x3, 3sc, rep from * x5, with B ss.

Rnd 9: with B *sc, 2dc, [2sc, dc, 2sc, dc, sc, dc]x3, 2sc, dc, 2sc, 2dc, rep from *x5, with C ss.

Rnd 10: with C *dc, 2sc, dc, [3sc, dc]x7, 2sc, rep from * x5, with B ss.

Rnd 11: with B *sc, 2dc, [2sc, dc, 2sc, dc, sc, dc]x3, 2sc, dc, 2sc, 2dc, rep from * x5, with C ss.



REPEAT 6 times (34 sts)

Notes for Chart 2:

- See chart key on p. 11. Red column highlights first st of each round. Each round starts with ch1 (doesn't count as st, omitted on the chart).
- Start **Rnd 28** with dc2inc, make dc3inc in the middle of each 5 rem flowers, finish rnd with dc in same st as beg dc2inc (tog counts as dc3inc).
- Start **Rnd 42** with sc2tog, make sc3tog in the middle of each 5 rem flowers, finish rnd with partial sc: with 2lps on hook and with B make ss in beg sc2tog.

Rnd 12: with C *dc, 3sc, dc, sc, dc, [2sc, dc, 2sc, dc, sc, dc]x3, 3sc, rep from * x5, with B ss.

Step pictures for Rnds 13-43 on p. 13.

Rnd 13: with B *2sc, 2dc, [3sc, dc]x7, dc, sc, rep from * x5, with C ss.

Rounds 14-17: <https://youtu.be/RB-jYaHCRhk>

Hide rounds joining line:

<https://youtu.be/Rr1gLY2AiFY>

Rnd 14: with C, *dc, dc2inc, sk dc, 29sc (1st in 2nd of 2dc, last in 1st of 2dc), sk dc, dc2inc, rep from * x5, with B ss.

Rnd 15: with B *sc, FPhdc, 4sc, 2dc, 19sc, 2dc, 4sc, FPhdc, rep from * x5, with C ss.

Rnd 16: with C *dc, sc, dc, sc, dc, dc2inc, sk dc, 21sc (1st in 2nd of 2dc, last in 1st of 2dc), sk dc, dc2inc, dc, sc, dc, sc, rep from * x5, with B ss.

Rnd 17: with B *sc, dc2inc (in FPhdc), sk dc, 2sc, tr (in sc below 2nd st back), 3sc (1st in 2nd dc of dc2inc), dc2tog (1st leg in sc below prev sc), 15dc, dc2tog, 3sc (1st above 2nd leg of prev st, last in 1st dc of dc2inc), tr (in sc below 3rd st forward), 2sc (1st in dc, 2nd in sc), sk dc, dc2inc (in FPhdc), rep from * x5, with C ss.

Rounds 18-20:

<https://youtu.be/wdkBpgrSBOw>

Rnd 18: with C *dc, 2sc, dc2tog (1st leg in dc below prev st), dc, sc (in tr), 3dc (1st in 2nd dc of dc2inc), 17sc (1st and last in dc2tog), 3dc (last in 1st dc of dc2inc), sc (in tr), dc (in dc), dc2tog (2nd leg in dc), 2sc, rep from * x5, with B ss.

Rnd 19: with B *sc, 2dc, 4sc (1st in dc2tog), FPtr in tr, 2sc (1st in dc), dc2tog (1st leg in dc2tog or below prev st), 6dc, sc, 6dc, dc2tog

(2nd leg in dc2tog), 2sc (1st in sc made in same dc2tog), FPtr in tr, 4sc (last in dc2tog), 2dc, rep from * x5, with C ss.

Rnd 20: with C *dc, 4sc, dc2tog (1st leg in dc below prev sc), dc (in 1st of 3dc), sc (in FPtr), dc (in 3rd of 3dc), dc2inc (in next sc), sk dc2tog, 6sc (1st in next dc after dc2tog), dc, 6sc (last in dc before dc2tog), sk dc2tog, dc2inc (in sc below next sc after dc2tog), dc (in 1st of 3dc), sc (in FPtr), dc (in 3rd of 3dc), dc2tog (1st leg in sc, 2nd leg in dc), 4sc (1st in st above prev leg), rep from * x5, with B ss.

Rounds 21-25: <https://youtu.be/pPRa9HCHisc>

Rnd 21: with B *sc, 3dc, dc2inc, sk dc2tog, 3sc (2nd in sc above FPtr), FPtr (in FPtr), sc (in 2nd dc of dc2inc), 5dc, 3sc (2nd in dc), 5dc, sc (in 1st dc of dc2inc), FPtr (in FPtr), 3sc (2nd in sc above FPtr), sk dc2tog, dc2inc (in next sc), 3dc, rep from * x5, with C ss.

Rnd 22: with C *dc, 6sc, dc2tog (1st leg in dc below prev st, 2nd in sc), dc (in dc), sc (in FPtr), dc2inc (in 2nd dc of dc2inc), sk dc, 4sc, dc, sc, dc, 4sc, sk dc, dc2inc (in 1st dc of dc2inc), sc (in FPtr), dc (in dc), dc2tog (1st leg in sc, 2nd leg in dc), 6sc (1st in sc above prev leg), rep from * x5, with B ss.

Rnd 23: with B *2sc, 4dc, dc2inc (in sc after dc2inc), sk dc2tog, 4sc (2nd in sc above FPtr), 3dc, 2sc, dc, 2sc, 3dc, 4sc (3rd in sc above FPtr), sk dc2tog, dc2inc (in sc), 4dc, sc, rep from * x5, with C ss.

Rnd 24: with C *2dc, 7sc, dc2tog (1st leg in dc below prev st, 2nd leg in sc above FPtr), 2dc, 3sc, dc, 3sc, dc, 3sc, 2dc, dc2tog (1st leg in sc above FPtr), 7sc (1st in st above prev leg), dc, rep from * x5, with B ss.

Rnd 25: with B *4sc, 6\dc (in 5dc and sc; 1st in dc below prev sc), sk dc2tog, 2sc, 2dc, 2sc, dc, sc, dc, 2sc, 2dc, 2sc, sk dc2tog, 6/-dc (1st in sc after dc2tog, each in st below next st), 3sc (1st in st above st with prev dc), rep from * x5, with C ss.

Rounds 26-30: <https://youtu.be/NBeaGw3sIaQ>

Rnd 26: with C *3sc, dc2tog (1st leg in st below prev sc), 2FPhdc (in 1st and 2nd of 6 dc), 8sc, dc, 2sc, dc, 2sc, dc, 8sc, 2 FPhdc (in last 2dc of 6), dc2tog, 2sc (1st in st above st with prev leg), rep from * x5, with B ss.

Rnd 27: with B *sc, 2dc, 6sc (1st in dc2tog), dc2tog (1st leg in st below prev sc), 3dc, 2sc, dc, 3sc, dc, 2sc, 3dc, dc2tog, 6sc (1st in st above prev leg, 4th and 5th in FPhdc, 6th in dc2tog), 2dc, rep from * x5, with C ss.

Rnd 28: with C dc2inc, *sk dc, 2sc (1st in dc, 2nd in sc), 6\dc (1st in dc2tog below prev sc), sk dc2tog, 3sc, dc, 2sc, dc, sc, dc, 2sc, dc, 3sc, 6/-dc (1st in sc after dc2og, 4th and 5th in FPhdc), 2sc (1st in sc above dc2tog with last dc), sk dc**, dc3inc in sc, rep from * x4, rep from * to **, dc in same st as beg dc2inc (tog count as dc3inc), with B ss.

Rnd 29: with B *2sc, dc, dc2inc, sk dc, 5sc, dc2tog (1st leg in dc2tog), 2dc, 2sc, dc, 3sc, dc, 2sc, 2dc, dc2tog (2nd leg in dc2tog), 5sc, sk dc, dc2inc, dc, sc, rep from * x5, with C ss.

Rnd 30: with C *dc, dc2inc, sk dc, 2sc (in dc2inc), 4dc, dc2inc, sk dc2tog, 3sc, dc, 2sc, dc, 2sc, dc, 3sc, sk dc2tog, dc2inc (in next dc), 4dc, 2sc (in dc2inc), sk dc, dc2inc, rep from * x5, with B ss.

Rounds 31-43: <https://youtu.be/tCixnwwveAI>

Rnd 31: with B *3sc, 2dc, 6sc, 3dc (2 in dc, last in sc), 2sc, dc, sc, dc, 2sc, 3dc, 6sc, 2dc, 2sc, rep from * x5, with C ss.

Rnd 32: with C *2dc, dc2inc, 2\sc (in 2dc), 6dc, sk dc, 3sc, dc, 3sc, dc, 3sc, sk dc, 6dc, 2/-sc (in 2dc), dc2inc, dc, rep from * x5, with B ss.

Rnd 33: with B *4sc, 2dc, 6sc, 3dc (2 in dc,

last in sc), 2sc, dc, 2sc, 3dc, 6sc, 2dc, 3sc, rep from * x5, with C ss.

Rnd 34: with C *4dc, 2sc, 6dc, 4sc, dc, sc, dc, 4sc, 6dc, 2sc, 3dc, rep from * x5, with B ss.

Rnd 35: with B *4sc, 2dc, 6sc, 4dc, 3sc, 4dc, 6sc, 2dc, 3sc, rep from * x5, with C ss.

Rnd 36: with C *4dc, 3sc, 6\dc (1st in st below prev sc), sk dc, sc, FPhdc, 2sc, dc, 2sc, FPhdc, sc, sk dc, 6/-dc (in 6 dc), 3sc (1st in sc above st with prev dc), 3dc, rep from * x5, with B ss.

Rnd 37: with B *3sc, sk dc, dc2inc, dc, dc2inc, sk dc, 7sc (last in FPhdc), 2dc, sc, 2dc, 7sc (1st in FPhdc), sk dc, dc2inc, dc, dc2inc, sk dc, 2sc, rep from * x5, with C ss.

Rnd 38: with C *2dc, dc2tog, 6sc (in 5dc, last in sc), dc2tog (1st leg in dc below prev sc), 3dc, dc2tog (2nd leg in FPhdc), 7sc (1st in sc above FPhdc), dc2tog (1st leg in FPhdc), 3dc, dc2tog, 6sc (1st in sc above dc with prev leg), dc2tog (1st leg in 1st of 7dc), dc, rep from * x5, with B ss.

Rnd 39: with B *2sc, sk dc2tog, dc2inc, 5dc (4 in dc, last in sc), 5sc (1st and last in dc2tog), 7dc, 5sc (1st and last in dc2tog), 5dc (1st in sc, 4 in dc), dc2inc, sk dc2tog, sc, rep from * x5, with C ss.

Rnd 40: with C *dc, dc2tog (2nd leg in dc2tog), 31sc, dc2tog (1st leg in dc2tog), rep from * x5, with B ss.

Rnd 41: with B *sc, sk dc2tog, dc2inc (in 1st dc of dc2inc), dc, 27sc, dc, dc2inc (in 2nd dc of dc2inc), sk dc2tog, rep from * x5, with C ss.

Note for Rnd 42: to compensate for the higher middle petal due increases, instead of dc3tog, sc3tog is made at the top of each petal.

Rnd 42: with C sc2tog (2nd leg in dc2tog), [33sc, sc3tog (1st and 3rd legs in dc2tog)]x5, 33sc, sc in dc2tog, but do not finish: with 2 lps on hook, with B ss.

Rnd 43: with B *FPsc (in sc3tog), 3dc, [3sc, dc]x6, 3sc, 3dc, rep from * x5, with C ss.

Rnd 44: with C *4sc, [dc, sc, dc, 2sc, dc, 2sc]x3, dc, sc, dc, 3sc, rep from * x5, with B

ss.

Rnd 45: with B *sc, 2dc, [2sc, dc, 2sc, dc, sc, dc]x3, 2sc, dc, 2sc, 2dc, rep from * x5, with C ss.

Rnd 46: with C *dc, 2sc, [dc, 3sc]x7, dc, 2sc, rep from * x5, with B ss.

Rnd 47: with B *2sc, [dc, 2sc, dc, 2sc, dc, sc]x4, rep from * x5, with C ss.

Rnd 48: with C *sc, dc, 2sc, [dc, sc, dc, 2sc, dc, 2sc]x3, dc, sc, dc, 2sc, dc, rep from * x5, with B ss.

Rnd 49: with B *dc, 2sc, [dc, 3sc]x7, dc, 2sc, rep from * x5, with C ss.

Note: Keep making all sc in back loop, all dc in front loop from 1 round down.

Rnd 50: with C 204sc, with B ss.

Rnd 51: with B 204sc, with C ss.

Rnd 52: rep Rnd 50. (204sc)

Dec Rnd 53: with B [49dc, dc2tog]x4, with C ss. (200 sts)

Chart 3 on p. 11.

Rnd 54: with C 200sc (in each st), with B ss.

Rnd 55: with B 200sc (in each st), with C ss.

Rounds 56-57: <https://youtu.be/-MifDDhfgco>

Rnd 56: with C sc, \-dc (in sc below prev st, part of “dc, sc, dc” in same st), [sk sc, 2sc, dc2tog (sk 2sc after prev dc, 1st leg in next sc, sk sc, 2nd leg in next sc), 2sc (1st in st above 2nd leg), sk 2sc after prev dc*, (dc, sc, dc) in next sc, but middle sc in sc from prev rnd while both dc in sc from 2nd rnd down]x24, rep from [to *, dc in same st as 1st dc, with B ss.

Rnd 57: with B [dc, sc, 2dc, FPsc (in dc2tog), 2dc, sc]x25, with C ss.

Rnd 58: with C [3sc, FPptr (in 2nd dc of “(dc, sc, dc) in sc”), sc (in FPsc), FPptr (in 1st dc of next “(dc, sc, dc) in sc”), 2sc]x25, with B ss.

Rnd 59: with B [3dc, sc (in FPptr), dc (in FPsc), sc (in FPptr), 2dc]x25, with C ss.

Rnd 60: with C [4sc, FPdc2tog (legs in FPptr), 3sc]x25, with B ss.

Rnd 61: with B [4dc, sc (in FPdc2tog), 3dc]x25, with C ss.

Rnd 62: with C [4sc, FPdc (in FPdc2tog), 3sc]x25, with B ss.

Rnd 63: with B [4dc, sc (in FPdc), 3dc]x25, with C ss.

Rnd 64: with C [3sc, FPdc (in FPdc), sc (in sc above same st), FPdc (in same FPdc), sk dc, 2sc]x25, with B ss.

Rnd 65: with B [3dc, sc (in 1st FPdc), dc bet 2 FPdc, sc (in 2nd FPdc), 2dc]x25, with C ss.

Rnd 66: with C [sc, FPptr (in 1st FPdc), 5sc, FPptr (in 2nd FPdc)]x25, with B ss.

- **For a shorter bag,** skip Rounds 67-82.

Rnd 67: with B [dc, sc (in FPptr), 5dc, sc (in FPptr)]x25, with C ss.

Rnd 68: with C [FPdc2tog (legs in FPptr to left and right), 7sc]x25, with B ss.

Rnd 69: with B [sc (in FPdc2tog), 7dc]x25, with C ss.

Rnd 70: with C [FPdc (in FPdc2tog), 7sc]x25, with B ss.

Rnd 71: with B [sc (in FPdc), 7dc]x25, with C ss.

Rnd 72: with C sc, FPdc (in FPdc), [5sc, sk last dc (of 7)*, FPdc (in FPdc), sc (in sc above same st), FPdc in same FPdc]x24, rep from [to *, FPdc in same st as 1st FPdc, with B ss.

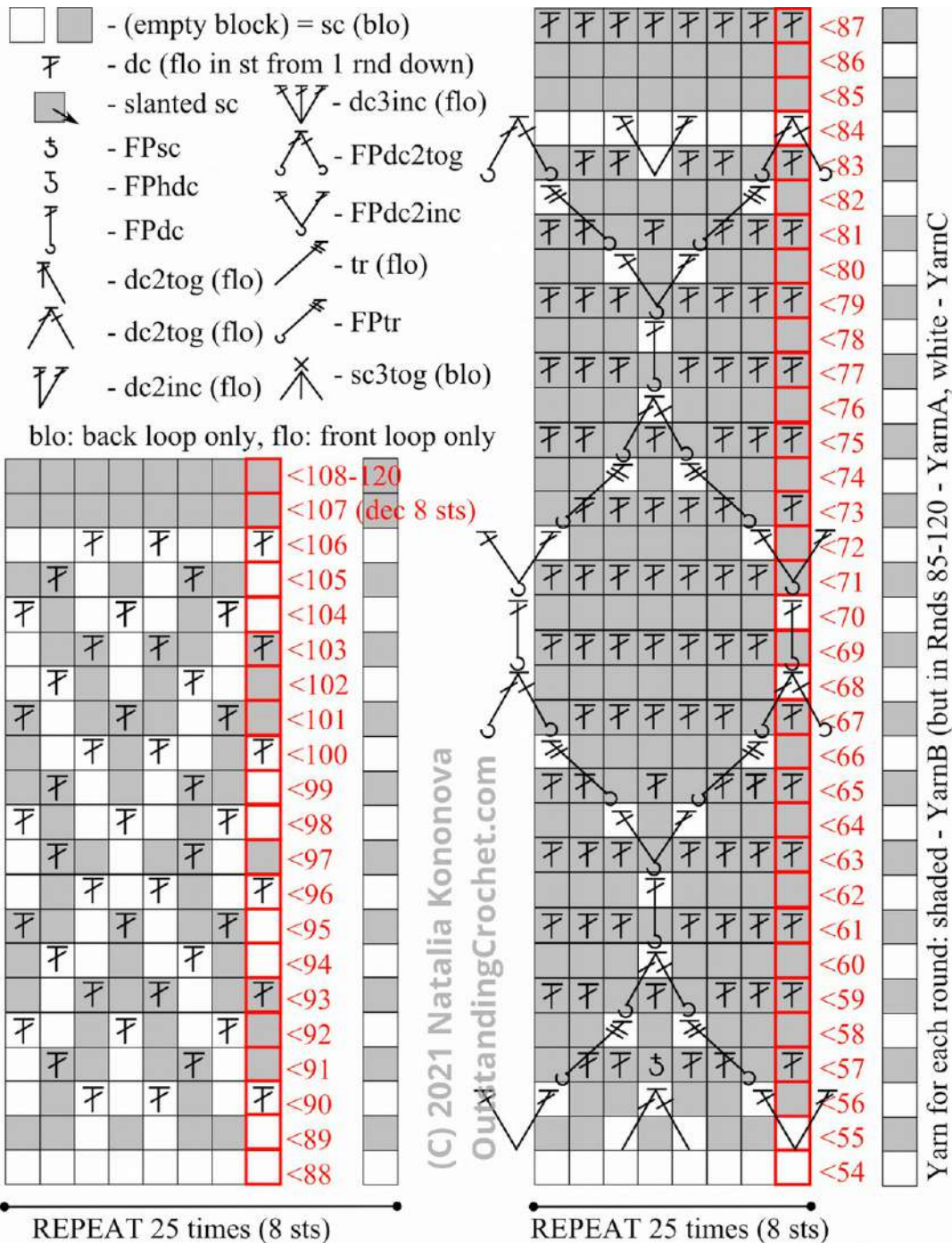
Rnd 73: with B [dc (bet 2 FPdc), sc (in FPdc), 5dc, sc (in FPdc)]x25, with C ss.

Rnd 74: with C [3sc, FPptr (in FPdc), sc, FPptr (in next FPdc), 2sc]x25, with B ss.

Rnd 75: with B [3dc, sc (in FPptr), dc, sc (in FPptr), 2dc]x25, with C ss.

Rnds 76-82: rep Rnds 60-66.

Rnd 83: with B [dc, sc (in FPptr), 2dc, sc, 2dc, sc (in FPptr)]x25, with C ss.



Charts 3. Rounds 54-120.

Notes for Chart 3:

- Red column highlights first st of each round. Each round starts with ch1 (doesn't count as st, omitted on the chart).
- Start **Rnd 56** with \-dc, finish rnd with dc in same st as beg dc. **Rnd 72** is similar to Rnd 52, but with FPdc instead of dc.
- Start **Rnds 68 and 84** with FPdc2tog in 1 rnd down, finish with ss in beg dc2tog.
- For a shorter bag, skip Rounds 67-82.

Rnd 84: with C [FPdc2tog (legs in FPtr to the left and right), 2sc, sk dc, dc (in sc), sc (in sc above same sc), dc (in same sc as 1st dc), sk dc, 2sc]x25, with A ss.

Rnd 85: with A 200sc (in every st), with C ss.

Rnd 86: with C 200sc (in every st), with A ss.

Rnd 87: with A 200dc (in every st), with C ss.

Rnd 88: rep Rnd 86.

Rnd 89: rep Rnd 85.

Rnd 90: with C [dc, 2sc, dc, sc, dc, 2sc]x25, with A ss.

Rnd 91: with A [2sc, dc, 3sc, dc, sc]x25, with C ss.

Rnd 92: with C [sc, dc, 2sc, dc, 2sc, dc]x25, with A ss.

Rnd 93: with A [dc, 2sc, dc, sc, dc, 2sc]x25, with C ss.

Rnd 94: with C [2sc, dc, 3sc, dc, sc]x25, with A ss.

Rnd 95: with A [sc, dc, 2sc, dc, 2sc, dc]x25, with C ss.

Rnd 96: with C [dc, 2sc, dc, sc, dc, 2sc]x25, with A ss.

Rnd 97: with A [2sc, dc, 3sc, dc, sc]x25, with C ss.

Rnd 98: with C [sc, dc, 2sc, dc, 2sc, dc]x25, with A ss.

Rnd 99: with A [2sc, dc, 3sc, dc, sc]x25, with C ss.

Rnd 100: with C [dc, 2sc, dc, sc, dc, 2sc]x25, with A ss.

Rnd 101: with A [sc, dc, 2sc, dc, 2sc, dc]x25, with C ss.

Rnd 102: with C [2sc, dc, 3sc, dc, sc]x25, with A ss.

Rnd 103: with A [dc, 2sc, dc, sc, dc, 2sc]x25, with C ss.

Rnd 104: with C [sc, dc, 2sc, dc, 2sc, dc]x25, with A ss.

Rnd 105: with A [2sc, dc, 3sc, dc, sc]x25, with C ss.

Rnd 106: with C [dc, 2sc, dc, sc, dc, 2sc]x25, with A ss.

Upper edge backing:

Note: backing circumference should be less than of rem bag, hence 8 sts are decreased in next round.

Dec Rnd 107: with A [23sc blo, sc2tog blo]x8, ss. (192sc)

Rnds 108-120: with A 192sc blo, ss.

Fasten off after Rnd 120. Wash and dry according to Care instructions.

Care

Hand-wash/ soak bag in lukewarm water with a bit of mild detergent, rinse, use a towel to squeeze out excess moisture, lay flat, leave to dry. Steam-block only 100% cotton projects if desired.

Flower in Rounds 13-43 (except Rnds 26, 27, 36).



Rnd 13



Rnd 14



Rnd 15



Rnd 16



Rnd 17



Rnd 18



Rnd 19



Rnd 19



Rnd 20



Rnd 21



Rnd 22



Rnd 23



Rnd 24



Rnd 25



Rnd 28



Rnd 29



Rnd 30



Rnd 31



Rnd 32



Rnd 33



Rnd 34



Rnd 35



Rnd 37



Rnd 38



Rnd 39



Rnd 40



Rnd 41



Rnd 42



Rnd 43

Lining

Soften bag by stretching it gently in all directions, imitating wear before measuring.



1) Measure straight part of the bag excluding bottom and upper edge backing: 34.5cm/ 13 5/8". Add 2cm/ 3/4" for adjustment and 1.5cm/ 1/2" for seam allowance: 38cm/ 15".



2) Measure bag width (35.12cm/ 13 7/8"), multiply x2 (70.24cm/ 27 3/4"), add 3cm/ 1 1/4" for seam allowance (73.24cm/ 28 7/8"). Cut a rectangle 73.24cm x 38cm/ 28 7/8" x 15".



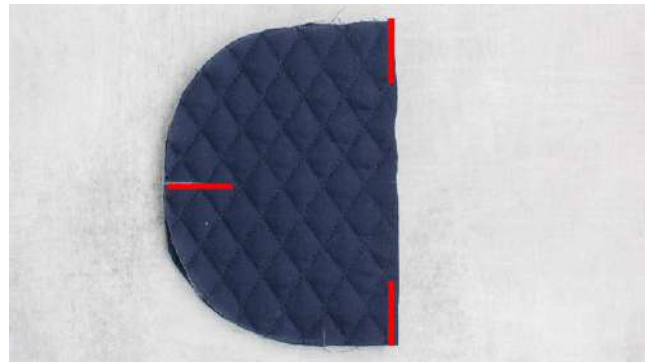
3) Cut bottom using previously made template, adding 1.5cm/ 1/2" around for seam allowance. Baste side seam with 1.5cm/ 1/2" seam allowance.



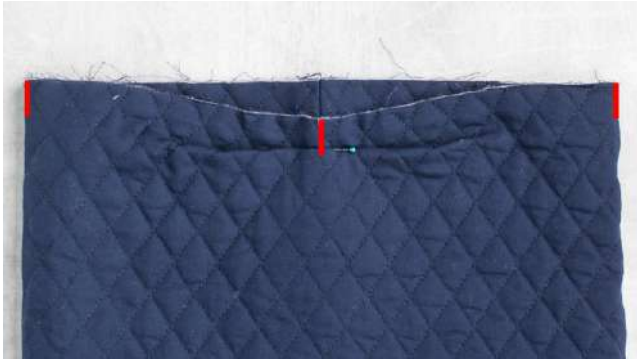
4) Fold piece in half, placing seam in the middle of one side. Insert lining into the bag, check if it fits in perfectly. Make adjustments if needed. Make side seam. Overcast side seam edges separately, press open.



5) Fold bottom in half both ways and mark folds.



6) You marked 4 equal parts.



7) Fold lining at the side seam, mark fold on other side. Align side seam and marker, mark folds on both sides. You marked 4 equal parts.



8) Place lining and bottom right sides together. Align side seam with middle mark of the bottom long side, pin and baste parts together.



9) Stitch pieces together with 1.5cm/ 1/2" seam allowance.



10) Overcast edges together, fold towards the bag bottom and hand-stitch allowances to the bag bottom with whip-stitch.



11) Insert lining into the bag, fill bag to 1/3 with knitwear, stretch gently, shake bag while holding it by the upper edge allowing lining to fill the bag bottom entirely.

Check that the height of the lining matches the height of the bag (without backing).



12) Make adjustments to the lining by trimming off excess fabric from its upper edge. If the end of the side seam comes undone after trimming, secure it with a few stitches. Overcast upper edge. Hand-stitch side seam allowances to the lining. Put aside.

Strap loop

Forces backpack to close when straps are pulled.



13) Facing RS of the bag back side, skip 1 rhombus to the right from rounds beg point, join A in upper edge (*starting point*), ch16 (shouldn't arch after joining; make less sts if necessary).



14) Turn, skip 1 rhombus to the left from rounds beg point, ss in upper edge (*finishing point*), turn, ch16, ss in *starting point*, turn, ch16, ss in *finishing point*, turn, ch16, ss in *starting point* (4x ch-16sps), tighten loop, turn.



15) Make approximately 22sc or amount to cover the loop entirely. Make sc in all four ch-16sps at the same time, placing sc close to each other. Fasten off. Draw both tails to WS, secure and weave in.

Straps

Note:

- 150cm/ 59" long strap is folded in half to create two straps: each 75cm/ 29 ½". Folded end is stitched to the backpack top, 2 other ends are stitched to the backpack back side close to the bottom (Pic. 19).
- 150cm/ 59" length fits size S. To find a comfortable length, measure straps of an existing backpack, add 6cm/ 6 ¼" to the length because 3cm/ 1 ¼" at each end will be used to stitch them on.

Video: <https://youtu.be/GRNn8n7DA2Q>

Row 1: leave 50cm/ 20" tail, make 10 sts of foundation cord, turn, ch1, sc in each foundation st, turn.

Rows 2-367 or to 75cm/ 29 ½" or to desired length, measured while strap is folded in half and stretched to a full capacity: ch1, 9sc (each made in upside-down "V"), sk 2lps after last upside-down V, sc in spot after 2lps, turn.

Fasten off, leaving 50cm/ 20" tail.



16) Fold strap in half. With a piece of A, sew folded edge to the bag front side upper edge at middle point (determine by drawing imaginary line up from middle flower). Make 4sts in each spot for secure connection.



17) Insert straps into the loop.



18) Align end of each strap with Rnd 6 (flower starting round) and its middle with flower middle line. Facing bag RS, stitch strap to the bag around the perimeter of “strap width” x 3cm/ 1 ¼" rectangle and along 2 diagonals, making short back stitches on RS and longer sts on WS. Make 2 or 3 rounds for secure connection. Pay most attention to the durability of upper horizontal seam which will receive the most pressure.



19) Consider to reinforce upper horizontal seam with polyester thread.

Finish lining



20) Weave in all rem ends. Insert lining into the bag. Align and pin together middle mark of lining front side with the bag front side middle point (determine by drawing imaginary line up from middle flower). Align and pin together lining side seam with beginning of Rnd 106.



21) Stretch bag and lining at the upper edge, and pin upper edges together in the middle bet previously placed pins.

Prevent straps from pulling the bag upper edge up: I didn't make this step for the prototype, but after finishing the bag, I realized that to prevent attached straps from pulling and stretching the bag upper edge, one extra step can be done: before starting upper edge seam, unfold backing where straps are attached and stitch straps attaching seam (visible on WS between backing and rem bag) to lining upper edge with whip stitch.



22) Snaps. Find sides of the bag at the upper edge. Sew parts of each snap close to the upper edge and about 5cm/ 2" from the bag side.



23) Upper edge seam. Using matching A color sewing thread, stitch edges together with back stitch, working on RS of the bag in Rnd 106 (last round before backing), through the lining and upper edge backing. Make stitches in A-sts of Rnd 106. Reinforce seam below attached straps by going back and forth one extra time.



24) Hand-stitch backing edge to lining with whip stitch.